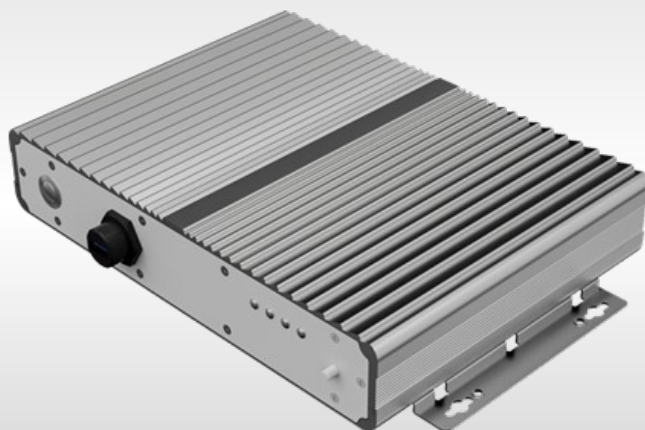


F65EAC-IT32

Full IP65 Rugged Embedded PC with M12 Connector, Intel® Core™ i5-1135G7



CE

FCC

KEY FEATURES

- Full IP65 rugged embedded pc, aluminum profile with fin
- Ultra compact size with fanless design, box PC with M12 connector
- Support M.2 SSD
- One M.2 socket expansion
- 9~36V DC with isolation
- 11th Generation (Tiger Lake) Intel® Core™ i5-1135G7 Processor
- M12 waterproof connector

INTRODUCTION

Winmate Waterproof Full IP65 EAC Box PC Series is a rugged, fanless solution designed to operate reliably in extreme industrial environments. Featuring full IP65 protection, aluminum alloy housing, and M12 waterproof connectors, it resists dust, water, vibrations, and electromagnetic interference. Powered by 11th and 12th Gen Intel® Core™ processors, with support for DDR5 RAM and M.2 NVMe SSDs, these compact Box PCs deliver high performance and flexibility. Ideal for manufacturing, transportation, and harsh outdoor settings, they ensure durability and seamless connectivity in demanding conditions.

SPECIFICATIONS

System Specification

WLAN	Support (Optional)	BT	Support (Optional)
Processor	Intel Core i5-1135G7 2.4GHz (up to 4.2GHz)	Memory	1 x SO-DIMM, DDR4 3200 MHz, 4GB 8GB (Optional) 16GB (Optional) 32GB (Optional)
Storage	1 x M.2 2280 M-Key NVMe SSD 128GB 256GB (Optional) 512GB (Optional) 1TB (Optional) 2TB (Optional)	Ethernet controller	2 x Intel® Ethernet Controller
Security	TPM 2.0	Operating System	Windows 11 IoT Enterprise (64 bit) (Optional) Windows 11 Pro 64 bit (Optional) Linux Ubuntu 22.04(Do not support Wake on Touch) (Optional)

Mechanical

Dimension	260.4 x 193 x 50.1 mm(w/o desk mount bracket) 275.4 x 193 x 56.1 mm(w/i desk mount bracket)	Weight	3.0 kg
Mounting	Desk Mount	Enclosure	Aluminum Housing
Cooling System	Fanless design		

Environment

Operating Humidity	10% to 90% RH, Non-Condensing	Operating Temperature	0°C to 50°C
Storage Temperature	-20°C to 60°C	Shock	Operating, IEC 60068-2-27
Vibration	Operating, IEC 60068-2-64	IP rating	IP65

Certification

Certification	CE, FCC
---------------	---------

IO Ports

Power Input	1 x M12 waterproof connector for 9~36V DC	USB Port	1 x M12 waterproof connector for 2 x USB2.0 1 x Waterproof USB Type-A Connector with cover
Serial Port	1 x M12 waterproof connector for RS232/RS422/RS485 (Default RS232) 2 x M12 waterproof connector for RS232 (Optional)	Video	1x Waterproof connector for HDMI output
Expansion Port	1 x M.2 2230 E-Key Slot (for Wi-Fi Module)	LAN	2 x M12 type connector for Giga LAN
Indicator	1 x LED Indicator for power 1 x LED Indicator for storage 2 x LED Indicator for LAN	DIDO	1x M12 type connector for Digital 4 in/ 4 out (Optional)

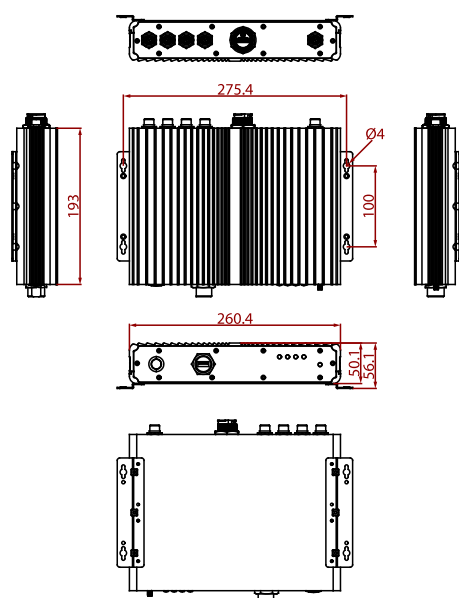
Control

Button	1 x Power Button with LED Indicator
--------	-------------------------------------

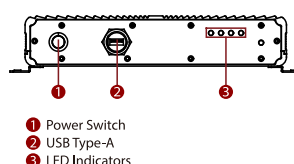
Accessory

Accessory	External open wire Power cable with waterproof connector External USB cable with waterproof connector External HDMI cable with waterproof connector External COM cable with waterproof connector External LAN cable with waterproof connector Waterproof caps RJ45 female-female converter	Optional Accessory	100~240V AC to DC Adapter with waterproof connector (Optional) Power Cord (Optional)
------------------	--	---------------------------	---

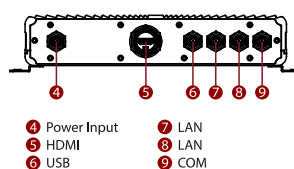
DIMENSIONS UNIT:MM



Front side I/O



Rear side I/O



NOTE

1. This is a simplified drawing and some components are not marked in detail.
2. Please contact our sales representative if you need further product information.
3. A customized housing is required if you need additional I/O connectors.
4. To connect Winmate stainless series Panel PC or Display it is required to use an optional two sides waterproof connector.
5. All specifications are subject to change without prior notice.
6. The product shown in this datasheet is a standard model. For diagrams that contain customized or optional I/O, please contact the Winmate Sales Team for more information.