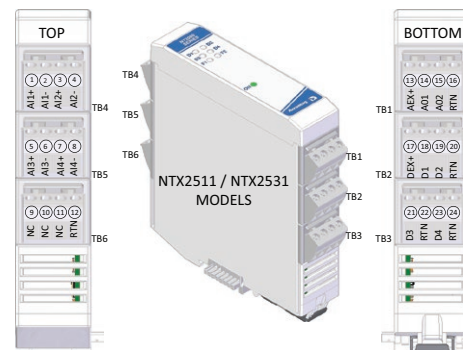
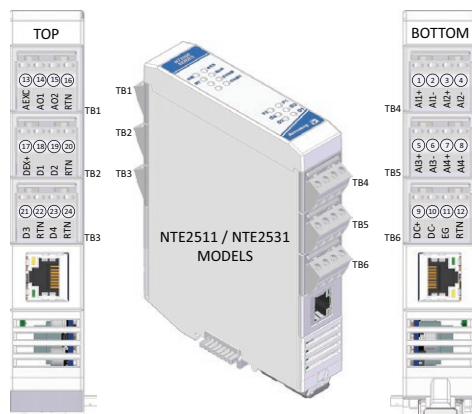




Ethernet I/O: BusWorks® NT Series

NT2510/2530 Ethernet Multi-Function I/O Modules



4 analog inputs ♦ 2 analog outputs ♦ 4 discrete I/O ♦ Ethernet I/O plus Expansion I/O ♦ Multi-protocol support

The BusWorks® NT2000 series offers a cost-effective, modular solution for Ethernet remote I/O systems. Two module types are available. NTE Ethernet models provide the protocol interface plus I/O signal processing channels. NTX expansion modules can add extra I/O channels when mated to any NTE Ethernet communication module.

NT2510 modules offer 4 current inputs, 2 current outputs, and 4 discrete I/O channels. NT2530 models have voltage input. NTE Ethernet models provide a network interface to monitor and control I/O signals. Appending NTX expansion modules can interface up to 24 analog and 16 discrete I/O on a single IP address

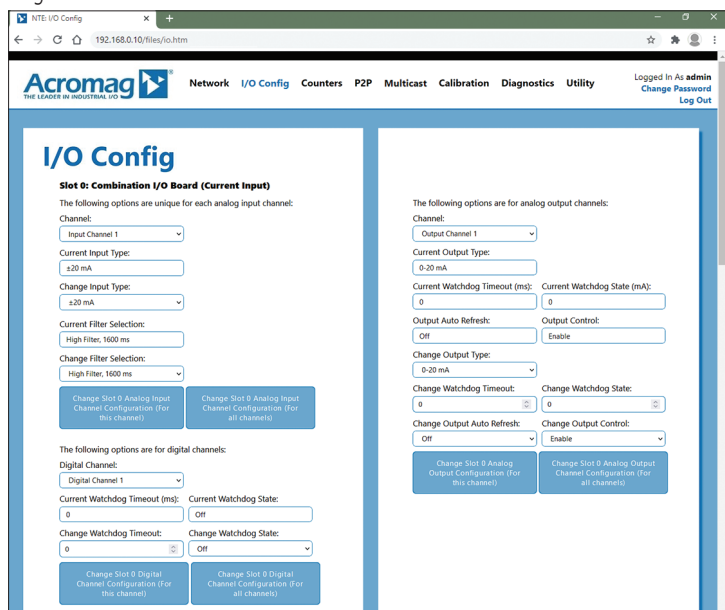
Applications include monitoring and controlling analog signals representing temperature, pressure, level, and flow. Discrete I/O sense and control levels on motors, lamps, valves, and other equipment.

An isolated RS-485 bus links up to three expansion modules to the Ethernet module with connectors that join along the DIN rail. This internal NT bus distributes power and communication between the modules. Users can mix analog, temperature, and discrete I/O modules across the NT bus.

Acromag's i2o® messaging technology allows direct peer-to-peer multicast communication between remote modules without a master controller.

Key Features & Benefits

- Configured over Ethernet with web browser
 - Expandable I/O capacity, up to 58 I/O channels of mixed signal types on one IP address
 - Field-selectable Modbus TCP/IP, Ethernet/IP, or Profinet communication
 - i2o peer-to-peer or multicast communication
 - Dual RJ45 ports enable daisy chain topology
 - Four differential analog inputs
current ranges: 0/4-20mA, ± 20 mA, 0/10-50mA
voltage ranges: 0-1/5/10V, $\pm 1/5/10$ V
 - Two process current 0/4-20mA outputs (optional)
 - Four tandem discrete I/O for TTL or 32V input
 - *OPC-UA, *MQTT and *RESTful API IIoT support
 - Conditional logic for rule-based I/O operation
 - Advanced *alarm and *data logging functions
 - 1500V isolation from I/O to network and power
 - Thin 25mm housing with pluggable terminals
 - Wide temperature operation (-40 to 70°C)
 - CE compliant. Hazardous approval pending.
- * Coming soon. Consult factory for availability.



Easily configure I/O modules using any web browser.



Tel 877-214-6267 ■ sales@acromag.com ■ www.acromag.com ■ 30765 Wixom Rd, Wixom, MI 48393 USA



Ethernet I/O: BusWorks® NT Series

NT2510/2530 Ethernet Multi-Function I/O Modules

Performance Specifications

■ Ethernet Interface (NTE models only)

Communication

Configurable for Modbus TCP/IP and EtherNet/IP, and Profinet.

10/100Mbps data rate, auto-sensing.

IP Address

Default 192.168.0.10. Configurable static IP or DHCP.

■ Analog Inputs

A/D Converter

Four input channels differentially multiplexed to a 24-bit sigma-delta ADC through unity-gain differential buffers (only 16-bits are used).

Input Current Ranges (NT2510 models)

±20mA, 0-20mA, 4-20mA, 0-50mA, or 10-50mA.

Input Voltage Ranges (NT2530 models)

±1V, ±5V, ±10V, 0-1V, 0-5V, 0-10V.

Input Accuracy

Better than ±0.05% of span typical, ±0.1% maximum.

■ Analog Outputs

NT2511, 2531 models only

D/A Converter

Two current output channels driven by a 16-bit DAC.

Output Current Ranges

0-20mA, 4-20mA.

Output Accuracy

Factory calibrated to better than ±0.1% of span. Manual calibration can be better than ±0.05%.

Output Excitation

Two excitation inputs for 12V and 24V sources.

■ Discrete Inputs (Active-high)

Input Signal Voltage Range

0 to 32VDC.

Input Signal Threshold

TTL compatible w/100mV of hysteresis, typical.

Low-to-High threshold: 1.7VDC, typical.

High-to-Low threshold: 1.6VDC, typical.

TTL logic limit - LOW: 0.8V DC max.

TTL logic limit - HIGH: 2.0VDC min.

Tandem I/O Channels

Inputs support loop-back monitoring of output state.

■ Discrete Outputs (Sourcing)

Output "ON" Voltage Range

TTC (6V) to 32V DC.

Output "ON" Current Range

0 to 300mA DC, continuous.

■ General I/O

Input Update/Conversion Rate

Fresh data available to the network every 10mS.

Dependent on number of samples with averaging.

Response Time from an Ethernet command

Less than 5mS, typical.

■ Environmental and Physical

Temperature and Humidity

Operating: -40 to +70°C (-40 to +158°F).

Storage: -40 to +85°C (-40 to +185°F).

Relative Humidity: 5 to 95%, non-condensing.

Isolation

1500V AC for 60 seconds and 250V AC or 354V DC continuous between I/O channels (group), each network port and power circuits. Note, network isolation is <1500V.

Power Supply

10-32V DC SELV power wired to NTE models only. Power to NTX models is via NT bus connection.

Dimensions (width x height x depth)

NTE: 25 x 116.9 x 139.2 mm (0.98 x 4.6 x 5.48 inches).

NTX: 25 x 116.9 x 116.65 mm (0.98 x 4.6 x 4.59 inches).

Weight

NTE: 0.5 lbs (0.23 kg).

NTX: 0.3 lbs (0.14 kg).

■ Standards and Certifications

Electromagnetic Compatibility (EMC)

CE marked, per EMC Directive 2004/108/EC.

Safety Approvals

UL/cUL: Class I; Div 2; Groups A, B, C, D (pending).

ATEX/IECEx: Zone 2 (pending).

Ordering Information

■ Models

[Go to on-line ordering page >](#)

NTE2511-1111

Ethernet I/O module with dual RJ45 ports, 4 current inputs, 2 current outputs, 4 discrete I/O

NTX2511-0011

Expansion I/O module with 4 current inputs, 2 current outputs, 4 discrete I/O

NTE2512-1111

Ethernet I/O module with dual RJ45 ports, 4 current inputs, 4 discrete I/O

NTX2512-0011

Expansion I/O module with 4 current inputs, 4 discrete I/O

NTE2531-1111

Ethernet I/O module with dual RJ45 ports, 4 voltage inputs, 2 current outputs, 4 discrete I/O

NTX2531-0011

Expansion I/O module with 4 voltage inputs, 2 current outputs, 4 discrete I/O

NTE2532-1111

Ethernet I/O module with dual RJ45 ports, 4 voltage inputs, 4 discrete I/O

NTX2532-0011

Expansion I/O module with 4 voltage inputs, 4 discrete I/O

■ Accessories

5020-350

Toroidal 0 to 20A AC current sensor. 0-11, 17mA output.

5035-369

5035-370

Ethernet patch cable, low EMI, double-shielded.

3 feet (5035-369) or 15 feet (5035-370).

PS5R-VB24

Power supply, 24V DC, 15W output.

See www.acromag.com for other sizes.

ISO9001
AS9100



Acromag®
THE LEADER IN INDUSTRIAL I/O

Tel 877-214-6267 ■ sales@acromag.com ■ www.acromag.com ■ 30765 Wixom Rd, Wixom, MI 48393 USA