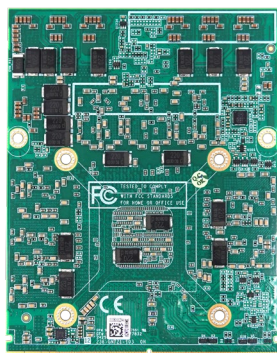
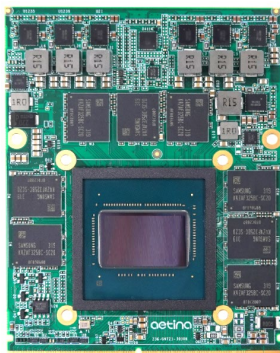


# AI Accelerator & GPU

# MXM Module MX5000A-WA



## Features

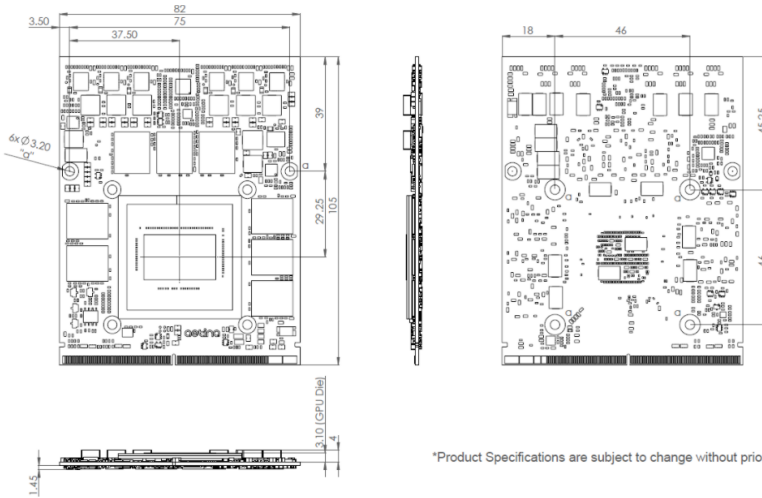
- NVIDIA RTX 5000 Ada Generation Embedded GPU based on NVIDIA Ada Lovelace architecture
- 9728 CUDA cores, 76 RT cores and 304 Tensor cores, 16GB GDDR6 memory
- PCIe Gen 4 x16 interface
- 41.15 TFLOPS peak FP32 performance
- Support Error Correction Code(ECC)

## Specifications

Model Number	MX5000A-WAG-A1	MX5000A-WAA-A1
GPU Engine Specs	NVIDIA RTX 5000 Ada Generation Embedded GPU Architecture: NVIDIA Ada Lovelace CUDA Cores: 9728 Tensor Cores: 304 RT Cores: 76 Floating Point Performance: 32.69 TFLOPS Core Clock (MHz): Base= 930 / Boost= 1680	NVIDIA RTX 5000 Ada Generation Embedded GPU Architecture: NVIDIA Ada Lovelace CUDA Cores: 9728 Tensor Cores: 304 RT Cores: 76 Floating Point Performance: 41.15 TFLOPS Core Clock (MHz): Base= 1425 / Boost= 2115
Memory Specs	Size: 16GB GDDR6 Speed: 18 Gbps Interface Width: 256-bit Bandwidth (GB/sec): 576	Size: 16GB GDDR6 Speed: 18 Gbps Interface Width: 256-bit Bandwidth (GB/sec): 576
Feature Support	PCI Express 4.0 x16 DirectX: 12 Ultimate Open GL 4.6 Vulkan 1.2	
Display	Resolution: 7680x4320 <sup>1</sup> Max: 4x DisplayPort 1.4a	
Power Consumption	Total Graphics Power (TGP): 80 W	Total Graphics Power (TGP): 115 W
Form Factor	MXM Graphics Module Version 3.1, Type B	
Dimensions (WxD)	82.0 x 105.0 mm (3.22" x4.13")	
Net Weight	0.06 kg (0.1323 lb)	
Temperature	Standard: Operating Temp. :0 to + 55°C (32°F ~131°F )/ Extended Operating Temp. :-40 to + 70°C (-40°F ~158°F ) /Storage Temperature: -40 to + 85°C (- 40°F ~ 185°F)	Standard: Operating Temp. :0 to + 55°C (32°F ~131°F )/ Storage Temperature: -40 to + 85°C (- 40°F ~ 185°F)
Humidity	40°C @ 95%, Non-condensing	
OS Support	Windows 10/11 64-bit / Linux 64-bit	
Certification	CE/FCC/UKCA	

1. Up to 4k 12-bit HDR at 240Hz with DP1.4a+DSC. Up to 8k 12-bit HDR at 60Hz with DP 1.4a+DSC or HDMI2.0+DSC. With dual DP1.4a+DSC, up to 8K HDR at 120Hz. HDCP 1.2/1.4. (eDP, LVDS, VGA, USB-C display output are not supported)

**System & Mounting Dimensions**



**Ordering Information**

Model name	Description
MX5000A-WAA-A1	MXM-B, NVIDIA RTX 5000 ADA, Gen4.0 x16, 16GB GDDR6, DP, 115W, 0°C to +55°C
MX5000A-WAG-A1	MXM-B, NVIDIA RTX 5000 ADA, Gen4.0 x16, 16GB GDDR6, DP, 80W, -40°C to +70°C

**Accessory (Optional)**

Part No.	Description
92-6MXM4H-1002	PCIe Carrier Board, MXM3.1, Gen4.0 x16, 4x HDMI, 0°C to +55°C
3904000000T000	MXM-B Cooler, TWO BALL, 12V 4PIN P2.5mm, L:250mm 7000RPM, 107*80.7*32.4mm, AL1100, 0°C to +55°C

