



(PDB with CRPS Module inserted)

FSP-FC250C

FEATURES

- A High Reliability PDB(power distribution board)
- CRPS Module Compatible
- 2U Narrow Form Factor
- Meet PMBus 1.2
- Design for 5,000 Meter above sea level
- Low Ripple & Noise
- Over Current Protection
- Over Temperature Protection
- Over Voltage Protection
- Cable Management

DESCRIPTION

FSP-FC250C is a PDB(power distribution board) designed for CRPS (common redundant power supply) base on its standard. FSP-FC250C supports total power up to 2400 Watts. In addition, the PDB is featuring its cable manageability and PMBus capability, ideally the best choice for datacenter, workstation, telecom applications.

GENERAL SPECIFICATIONS

Dimension (L x W x H): 250 x 76 x 83.8 (mm)

Environment

Working temperature: 0°C to 55°C

Storage temperature: -40°C to +70°C

Working humidity: 5% to 90% RH non-condensing

Storage humidity: 5% to 95% RH non-condensing

Hold-up time at 100%: 12V = 11ms

MTBF (SR-332 Issue 2): 500,000 hours of continuous operation at 55°C, 100% output load

Operating altitude: 5,000 meters above sea level

Applications: Storage System , Workstation, Industry Controller

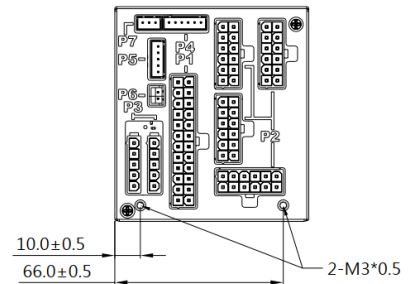
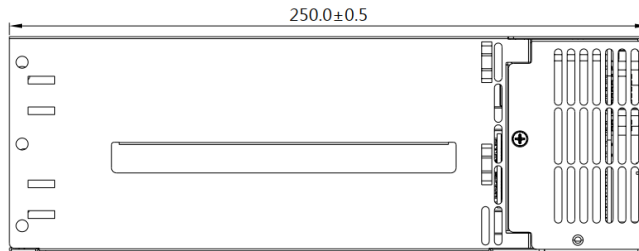
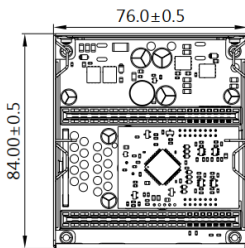
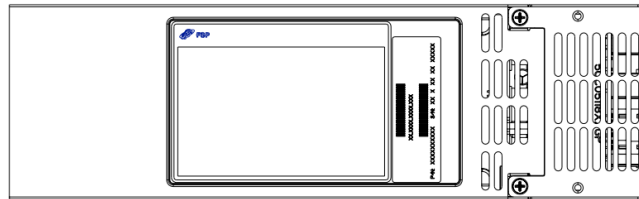
OUTPUT RATING (FSP-FC250C)

Output Power	Input Voltage	Current Range	DC Outputs				
			+3.3V	+5V	+12V	-12V	+5VSB
550W	100~240VAC	Min. Current	0A	0A	0.5A	0A	0A
		Max. Current	12A	24A	45.8A	0.3A	5A
		Combined Power	522W			3.6W	25W
800W	100~240VAC	Max. Current	12A	24A	65A	0.3A	5A
		Combined Power	772W			3.6W	25W
		Max. Current	12A	24A	80.5A	0.3A	5A
1200W	100~240VAC (1000W)	Combined Power	972W			3.6W	25W
		Max. Current	12A	24A	97A	0.3A	5A
	200~240VAC (1200W)	Combined Power	1172W			3.6W	25W
		Max. Current	12A	24A	80.5A	0.3A	5A
1600W	100~240VAC (1000W)	Combined Power	972W			3.6W	25W
		Max. Current	12A	24A	130.3A	0.3A	5A
	200~240VAC (1600W)	Combined Power	1572W			3.6W	25W
		Max. Current	12A	24A	80.5A	0.3A	5A

Output Power	Input Voltage	Current Range	DC Outputs				
			+3.3V	+5V	+12V	-12V	+5VSB
2000W	100~240VAC (1000W)	Max. Current	12A	24A	80.5A	0.3A	5A
		Combined Power	972W			3.6W	25W
	200~240VAC (2000W)	Max. Current	12A	24A	163.6A	0.3A	5A
		Combined Power	1972W			3.6W	25W
2400W	100~240VAC	Max. Current	12A	24A	80.5A	0.3A	5A
		Combined Power	972W			3.6W	25W
	200~240VAC (2400W)	Max. Current	12A	24A	196.7A	0.3A	5A
		Combined Power	2372W			3.6W	25W

MECHANICAL SPECIFICATIONS

UNIT: mm



(Wire Harness is NOT included in standard shipping)