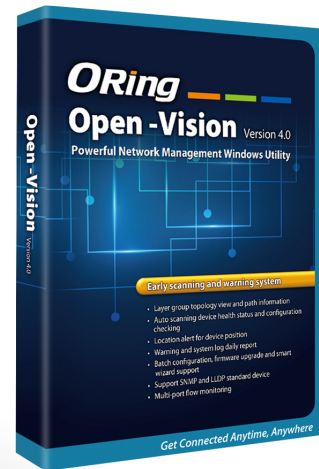


# Open-Vision version 4.0

## ► Powerful Network Management Windows Utility Suit

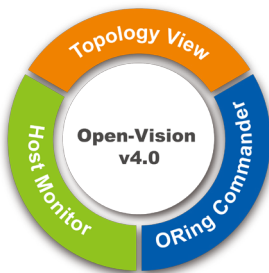
### Features

- Devices healthy monitor and alarm
- IP scan to detect all of the ORing switches and third party SNMP device in the local network
- Draw the whole network topology automatically and customize visualized setting available
- Support multi-link topology with port number information
- Multi-port flow monitoring
- Topology auto polling retry times setting for unstable networking environment
- Devices could be grouped and managed by different IP ranges
- ORing MAP technology could be showed network device locate by google MAP
- Support Ring information on ORing Topology View
- Device configuration scanning and comparation
- Supports group configuration backup to NAS server
- Support multi-language including English, Traditional Chinese 繁體中文\*NOTE and Russian русский \*NOTE
- IP setting group wizard, firmware upgrade group wizard, configuration backup and restore group wizard and redundant ring (O-Ring) setting wizard



\*NOTE: This function is available by request only

### Introduction



A powerful management utility is important for administrators to monitor and manage all devices in a local network. ORing is proud to announce Open-Vision 4.0, which is a powerful network management utility suit including four different features, could meet various demands from network monitor and managements in a wide range of industrial applications. For the four basic functions – Centralized management / Visualized management / Complete monitor / Early system, Open-Vision 4.0 provides for intelligent advantages which surpass the prior one in different aspects, we'll have detail descriptions the points. Only through the advanced monitoring features and various warning systems, the users could be informed any accidental situations in the local network and recover the network immediately. Hence, the stability and reliability of the local network could be assured.

### Centralized Mngement

Open-Vision 4.0 could help the administrator to configure all ORing's Ethernet switches at once within a few steps by powerful application wizards, including **Group IP Setting Wizard, Group Firmware Upgrade Wizard, Group Configuration Backup Wizard, Group Configuration Restore Wizard and Group Redundant Ring Setting Wizard**, in ORing commander. The administrators do not need to configure the managed switches one-by-one anymore.



## Visualized Management

ORing's Topology View could show up the complex topologies **including multiple-link topology** of all of ORing's Ethernet switches and **third party SNMP devices** in the local network. Further, different devices could be grouped by different IPs and to be shown in different topology windows. Thus, administrators need not to monitor all of the devices in the local network at once, which makes the job of monitoring easier and more efficient. On the other hand, **the health status of the connections will be shown on by different colors, user can even customized the link color, device icon, and the background image like Floor MAP.** ORing topology view helps the administrators to do the management visualizely, intuitively, and more efficiently.

## Complete Monitor

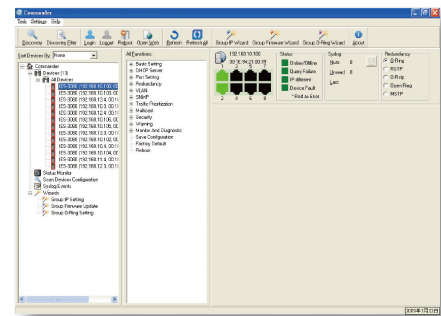
ORing-Vision 4.0 has various mechanisms to monitor the statuses of ORing's switches, including event log, and SNMP traps. The administrators will be informed the occurrences of any abnormal events by email, and the list of event log could be exported as an excel file. Moreover, the configurations of all ORing's switches could be saved and the status of configurations of all switches in local network could be scanned regularly to detect any changes of the configurations. Hence, administrators could know any unexpected changes of the configurations of switches. On the other hand, ORing Host monitor could automatically ping and check the health statuses of connections among all IP-based devices in local area network. Host Monitor also features IP categorized function, and all of IP-based devices could be grouped by the different IPs and to be monitored.

## Early Warning

Based on the various monitor mechanisms, if any failure is occurred in the network, administrators could be informed at a very early stage.

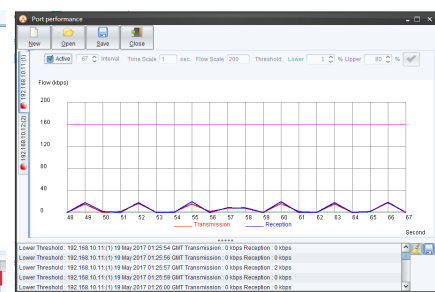
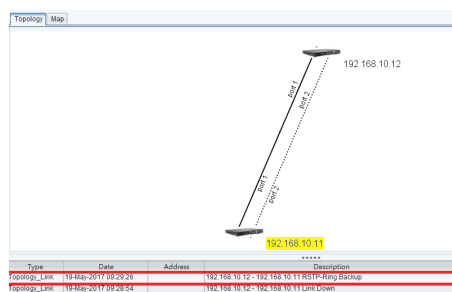
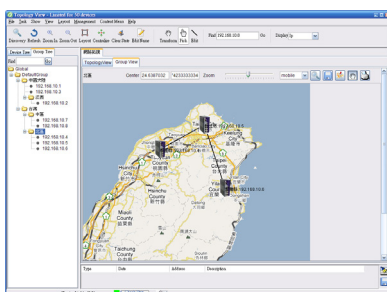
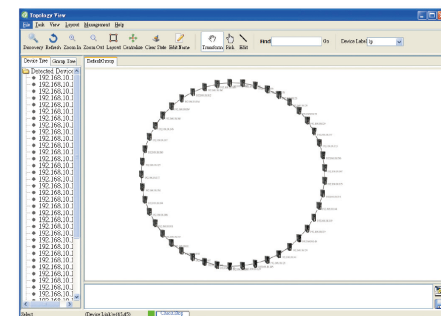
## ORing Commander

- Automatic devices discovery
- Device status monitoring
- Visualized device online/offline status, port link status and LED status
- Syslog events and auto save
- Scan device configuration and compare the device configuration and the backup configuration
- Multiple switches login and auto logout after idle for 300 seconds
- IP setting Group Wizard, Firmware Upgrade Group Wizard, Configuration Backup and Restore Group Wizard and Redundant Ring (O-Ring) Group Wizard



## ORing Topology View

- Topology View shows the topology of connections among all of the switches and third party SNMP devices in the local network.
- ORing MAP: Show up topology of connections on Google Map
- IP categorized function
- Supports multi-link topology with port number information
- Event log and it could be exported as an excel file.
- Visualized warning system of the health statuses of the connections among the switches
- Traffic flow analysis of each node that supports multiple ports performance monitoring with upper and lower traffic budget setting and flow alert
- The administrator could plan the future topology manually in "Edit" operation mode.
- Supports Ring information (O-Ring/O-chain enable/disable, ring port information)

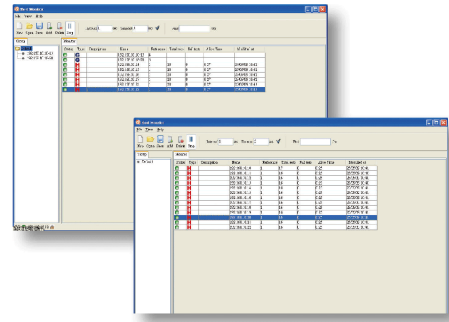


Industrial Ethernet Switch  
Industrial Media Converter  
Industrial Device Server  
Industrial Wireless Access Point  
Industrial Cellular VPN Router  
Industrial M2M Gateway  
Accessories

Network Management Software

## ORing Host Monitor

- IP scan to detect all of the IP-based devices in the local network.
- To check the health statuses of connections of all IP-based devices
- All of IP-based devices could be grouped and managed by different IP ranges.
- Visualized device online/offline status and show total test time and fail time
- Supports report by hour/minute/entry and save report to xml file



## Specifications

ORing Model	Open-Vision 50	Open-Vision 100	Open-Vision 300	Open-Vision 500	Open-Vision 1000
<b>Physical Ports</b>					
Device units	50	100	300	500	1000
Architecture	Free Download Use the USB license key to unlock the 50 units limit Windows utility				
Languages	English <b>Traditional Chinese</b> 繁體中文 *NOTE <b>Russian</b> русский *NOTE				
<b>Commander</b>					
Device Discovery	Supports Oring and third party SNMP devices Auto discovery the switches on the same subnet. Supports IPv4 addresses filter Supports adding new device manually Save default devices to commander without re-discovery				
Device Login/Logout	Multiple switches login/logout Auto logout after idle for 300 seconds Support auto logout time setting				
Device Management	Device list with device name, IP, and MAC information Supports ORing switches full web function configuration on Windows utility Supports Oring and third party devices manage on Web browser Visualized device online/offline status Visualized device port link status and LED status Multiple devices reboot function				
Device Monitor	Supports beep alarm after device fail Supports customized alarm sound Supports monitor query time period and timeout setting				
Configuration scanning	Compare the device configuration and the backup configuration Auto scan by every hour/day				
Syslog	Commander build-in syslog server Supports export event logs to excel file Event logs auto save function				
Group wizard	Group IP Setting using IP range or DHCP Group firmware upgrade Group configuration backup to local or <b>NAS server</b> Group configuration restore Group redundant ring setting to configure O-Ring port/coupling port/homing port				
<b>Topology View</b>					
Device Discovery	Supports Oring and third party SNMP devices Supports end device connected on switch (require enable device binding) IPv4 address range scanning Support adding new device manually Supports loading topology from existing backup file without re-discovery				
Link Discovery	LLDP link auto discovery Supports creating link manually <b>Supports redundant link on topology (back up link in dotted line)</b> Supports trunk link on topology <b>Supports multiple link topology with relative port number</b>				

\*NOTE: This function is available by request only

Device Group	Supports device group management View devices via group tree Supports collapse/extend/open new topology by device group
Topology View	Display devices information in IP, system name, annotation, disable display, or show/hide supervisor Real product image on Oring device <b>Supports third party SNMP devices (supports customized device icon)</b> Show/hide the device icon on topology Show/hide the port number of the link Show device roles of network redundancy protocols <b>Supports customized device icon, link path size, font size, link color for different link status, background image</b> Supports topology FR(Fruchterman-Reingold) layout mode, KK(Kamada-Kawai) layout mode, and centralize layout mode
Map View	Support topology on Google map Device latitude and longitude position management
Device Information	Device name, device description, ip address, mac address Neighbor list, port binding list <b>Ring information (O-Ring/O-chain enable/disable, ring port information)</b>
Device Monitor	Support monitor all ports link status of 2 devices at the same time Location alert (flash the switch LED to know the location of the device) Device alive check(ping or arp)
Traffic analysis	Traffic information on each port <b>Multiple ports performance monitoring</b> <b>Upper and lower traffic budget setting and flow alert</b> Traffic time scale and flow scale setting Save current port performance packet count
Topology Saving	Support saving current topology as default topology Support saving topology to a topology backup file Support printing current topology
Refresh	Supports periodical discovery with specific time interval Supports refresh manually Supports retry times setting for unstable networking environment
SNMP	Support trap agent to receive SNMP trap Support SNMP V1 and V2 Support SNMP read/write community setting, timeout interval setting
Syslog	Supports event log and SNMP traps Auto save the log daily or reaching specific entry number Support clear log Support export log to csv file
<b>Host monitor</b>	
Device Monitor	Monitor the alive time of all IP devices Monitor by group or IP range Auto refresh interval and timeout setting Start/stop monitor manually Visualized device online/offline status Show total test time and fail time Supports SNMP V1/V2
Device Message	Supports report by hour/minute/entry Save report to xml file
Monitor Saving	Save current host monitor and load history file

## System Requirement

<b>Software Requirements</b>	
Operating System	Windows 10 Windows 7 Windows Vista Windows XP/2000 Windows Server 2008 Windows Server 2003
Browser	IE 6.0 Service Pack 1 or higher version

Hardware Requirement	
CPU	Intel Core 2 Duo 2.4 GHz or above
RAM	1G or above
Hard Disk Space	1G or above
End Device Requirement	
Network Protocols	TCP/IP UDP SNMP

## Ordering Information

### Open-Vision v4.0

	Model Name	Description
Available Model	Open-Vision 50 (Free Download on Website)	Powerful Network Management Windows Utility Suit, 50 IP devices
	Open-Vision 100	Powerful Network Management Windows Utility Suit, 100 IP devices
	Open-Vision 300	Powerful Network Management Windows Utility Suit, 300 IP devices
	Open-Vision 500	Powerful Network Management Windows Utility Suit, 500 IP devices
	Open-Vision 1000	Powerful Network Management Windows Utility Suit, 1000 IP devices

#### Packing List

- Open-Vision CD x 1
- USB Key-pro x 1  
(Use the USB license key to unlock the 50 units limit)