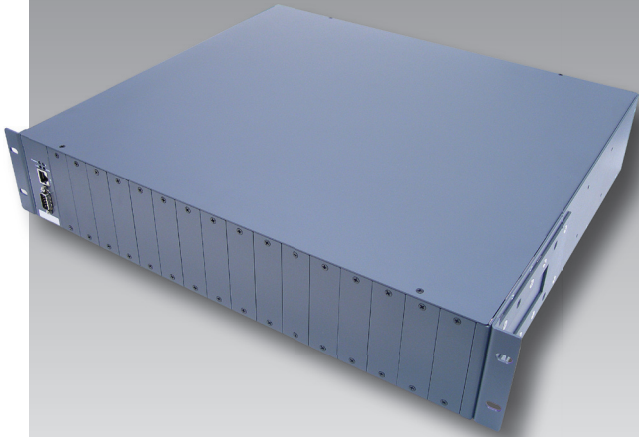


Optolinx FCM-CHS2

IN-BAND Management 16 Slot Media Chassis Center

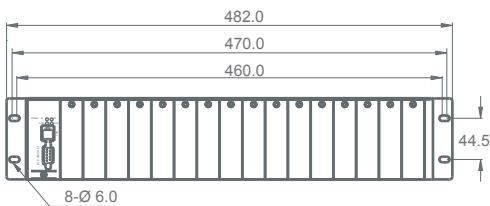
Features



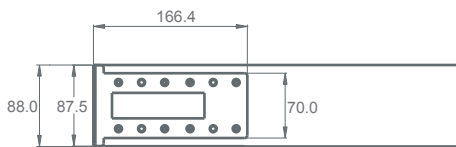
- ▶ Supports 16 Hot-Swappable Converter Modules (FCM-2312/3312)
- ▶ Supports 2 Hot-Swappable Power Modules (100-240VAC or 48VDC)
- ▶ Managed through Web/SNMP/Telnet/RS-232 Console
- ▶ Control and Monitor Local/Remote Modules via Web Browser
- ▶ In-Band Diagnostic (Loop Back Test) Button
- ▶ Supports Flow Control and Rate Limiting
- ▶ Broadcast Storm Blocking
- ▶ Auto Back-Up Configuration Settings via FTP/TFTP
- ▶ SNMP Agent and Trap Support
- ▶ 4-Level User Account Management
- ▶ Supports IP Security
- ▶ SNTP Time Server
- ▶ 19" Rackmount Design, 2U Height
- ▶ Chassis Power Module and Fan Monitoring
- ▶ 5-Year Warranty



▶ Specifications



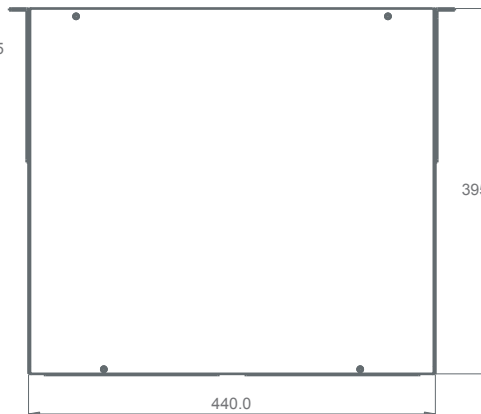
Panel View



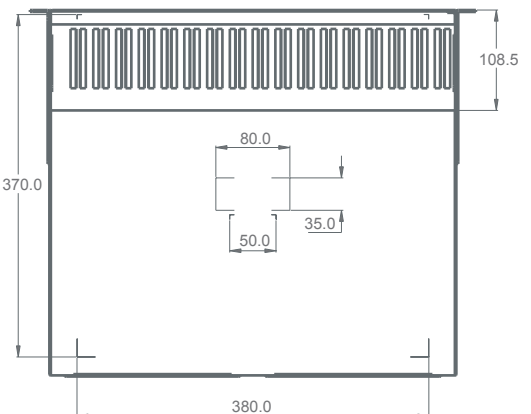
Side View



Rear View



Top View



Bottom View

► Specifications

Management

Protocols: Web Browser, SNMP, Telnet, RS-232 Console
Interface: DB-9 (DTE) and RJ-45 (10/100BaseTX)
Back-Up: Auto Back-Up Configuration Settings via FTP/TFTP

Local Module Management

Control: Auto/Speed/Duplex/Auto MDI/MDIX
Enhanced Control: Flow Control/Rate Limit/Broadcast Storm Blocking
Monitor: Model/Media/Link/Speed/Duplex/Activity
Enhanced Monitor: Traffic Counter
Specification: Fiber Type/Wavelength/Distance
Redundancy: Local Modules Redundant Configuration

Remote Module Management

Control: Auto/Speed/Duplex/Auto MDI/MDIX
Monitor: Model/Link/Speed/Duplex/Auto/Flow Control/Power

Console Interface

RJ-45 for Web & Telnet Console
DB9M for RS-232 Console

Number of Converter Module Slots

16 Slots for FCM-XXXX Series Converter Modules

Number of Power Module Slots

2 Slots for FCM-CHS2-XX Power Modules

LED

Power A, Power B, LAN, COM

Redundancy

Compatible with FCM-XXXX Modules for Fiber Redundancy

Power Supplies

FCM-CHS2-AC-PWR (AC Power): 100 ~ 240V, 4.0 ~ 2.0A, 50/60Hz
FCM-CHS2-DC-PWR (DC Power): 48VDC, 40A Max

Power Consumption

Empty (Without Modules): 3.5W
Full Load (16 Modules): 120W Max

Operation Temperature

0° C to 50° C (32° F to 122° F)

Storage Temperature

-20° C to 60° C (-4° F to 140° F)

Operation Humidity

5% to 90% (Non-condensing)

Case Dimension (W x H x D)

FCM-CHS2: 440 x 356 x 88 mm (17.32 x 14.02 x 3.46 inches)
Power Module: 190 x 238x 71 mm (7.48 x 9.37 x 2.80 inches)

Net Weight

FCM-CHS2: 6.8 Kg (14.96 lbs.)
Power Module: 1.7 Kg (3.74 lbs.)

Shipping Weight

FCM-CHS2: 9.0 Kg (19.8 lbs.)
Power Module: 1.85 Kg (4.07 lbs.)

Emission/Safety

FCC Class A, CE

Warranty

5-Year Warranty

► Ordering Information

FCM-CHS2-AC
FCM-CHS2-AC-PWR
FCM-CHS2-DC-PWR

IN-BAND Management 16 Slot Media Chassis Center (with 1 AC Power Module)
Additional Redundant AC Power Module for FCM-CHS2
Additional Redundant DC Power Module for FCM-CHS2

Optional Accessories

CBF-SC01ST-MD
CBF-SC01SC-MD
CBF-SC01SC-SS
AD-SCM-STF-M
AD-SCM-STF-S

SC to ST Multi-Mode Duplex Fiber Cable (1 Meter)
SC to SC Multi-Mode Duplex Fiber Cable (1 Meter)
SC to SC Single-Mode Simplex Fiber Cable (1 Meter)
SC (Male) to ST (Female) Duplex Adapter (Multi-Mode)
SC (Male) to ST (Female) Duplex Adapter (Single-Mode)

Antaira Technologies

Toll-Free: (877) 229-3665
Phone: (714) 671-9000
FAX: (714) 671-9944

e-Mail: info@antaira.com
Website: <http://www.antaira.com>


www.antaira.com