

Notice

This guide is designed for experienced users to setup the system in the shortest time.

Safety Precautions

Warning!



Always completely disconnect the power cord from your board whenever you are working on it. Do not make connections while the power is on, because a sudden rush of power can damage sensitive electronic components.

Caution!



Always ground yourself to remove any static charge before touching the board. Modern electronic devices are very sensitive to static electric charges. Use a grounding wrist strap at all times. Place all electronic components on a static-dissipative surface or in a static-shielded bag when they are not in the chassis



A Message to the Customer

First of all, thank you for purchasing PER-V30C Mini PCI Single Channel Video Capture Module. This Quick Installation Guide will help you in the process of the installation of this product. You will find these instructions in this Installation Guide. You may also visit the AAEON website at www.aaeon.com for the latest version of the instructions to do this.

AAEON Customer Satisfaction

All products in AAEON are designed following the strictest specifications to ensure that our products will perform reliably in typical industrial environments. Whether your purchase from AAEON is made for the purpose of being in a laboratory or in a factory facility, you can be assured that every purchase in AAEON will provide reliability and stability of operation. Your satisfaction is our primary concern. To ensure you get the full benefits of our services, please follow the instructions in the next section.

Product Warranty

AAEON Customer Services

All products in AAEON are designed as the strictest specifications to ensure that the products will own the reliable performance in the typical industrial environments. Whether your purchase from AAEON is made to the purpose of the laboratory or the factory facility, you can be assured that every purchase in AAEON will provide the reliability and stability of operation.

Your satisfaction is our primary concern. Here is a guide for AAEON's customer services. Ensure you get the full benefits of our services, please follow the instructions below step by step.

Technical Support

We require that you receive the maximum performance and satisfaction from your products. If you run into technical difficulties, we'll always be here for you. For the most frequently asked questions, you can easily find solutions in your product documentation as well as on our FAQ page under Support and Service on our website. We strongly suggest that you review these resources before asking for customer service over the phone. If you still cannot find the answer, gather all questions you can think of and have the product on hand before giving a call to your dealer. All

dealers of AAEON are well-trained and ready to provide you as much support as you need to get the most from your product. Based on the customer service we've encountered until now, most of problems are minor and able to be easily solved over the phone. In addition, technical support is available from AAEON engineers over e-mail. Please contact your AAEON dealer or visit our website www.aaeon.com to get the e-mail address you can use to ask for technical help. We are always pleased to give advice regarding installation and operation of AAEON products.

Ordering Information

- PER-V30C-A11

Mini PCI Single Channel Video Capture Module with Philips SAA7135

Packing List

- PER-V30C Mini PCI Single Channel Video Capture Module
- 1700030300 Audio Out Cable
- 1700090302 Audio & Video In Cable
- Quick Installation Guide
- Utility CD for QIG (in PDF format) and Driver

Driver Installation Notice

Under the circumstance of Windows® 2000, service pack 4 update is essential.

Under the circumstance of Windows® XP, service pack 1 update is essential.

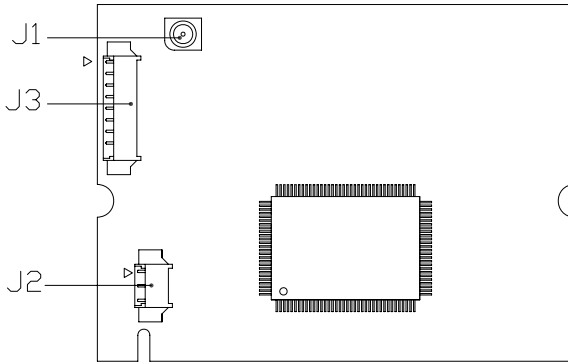
Content

A Message to the Customer.....	2
AAEON Customer Satisfaction	2
Product Warranty.....	3
Ordering Information.....	5
Packing List.....	5
Driver Installation Notice.....	5
1.1 Specification.....	7
1.2 Location of Jumpers and Connectors.....	8
1.3 Mechanical Drawing.....	8
1.4 Audio Line Out & AV Input Cable.....	9
1.5 RF In (J1) (Optional).....	9
1.6 Audio Line Out Connector (J2).....	10
1.7 AV Input Connector (J3).....	10
1.8 Driver Installation	11

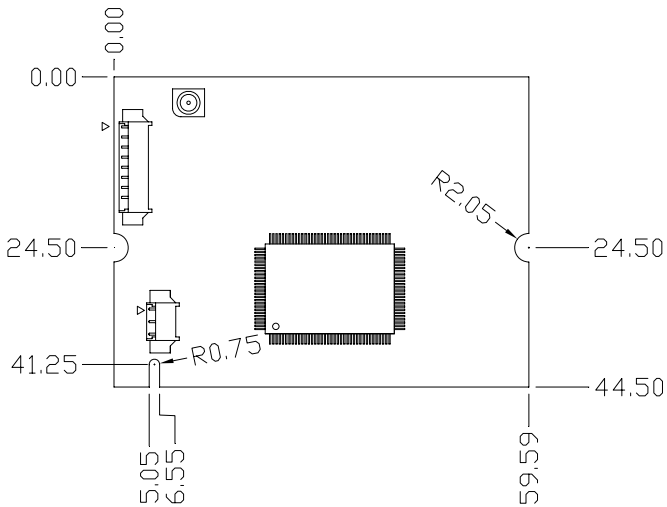
1.1 Specifications

- Form Factor Mini PCI Type III B
(44.5mm x 59.6mm)
- Video Decoder Philips SAA7135
- Video Input CVBS & S-Video
- Video Format Support NTSC & PAL
- Sample Rate 720 pixels / line
- Software Support Microsoft Windows® 2000 / XP
WDM driver for DirectShow based application
- Operating Temperature 32°F~140°F (0°C~60°C)

1.2 Location of Jumpers and Connectors



1.3 Mechanical Drawing

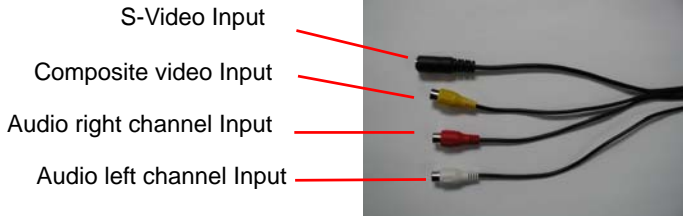


1.4 Audio Line Out & AV Input Cable

Audio Line out Cable



AV Input Cable



1.5 RF In (J1)(Optional)

The RF cable connection is required between RF connector (on PC case) and J1.

Pin	Signal
1	RF-IN
2	GND
3	GND
4	GND

1.6 Audio Line Out Connector (J2)

In case of some third-party TV Application S/W, the audio from TV card is bypassed to “Line_IN” or “AUX” of Sound chip. J1 is designed for this connection. The audio is digitized by SAA7135 then through PCI BUS directly. So, the omission of J2 is allowed.

Pin	Signal
1	EXT_OUT_R
2	EXT_OUT_L
3	GND

1.7 AV Input Connector (J3)

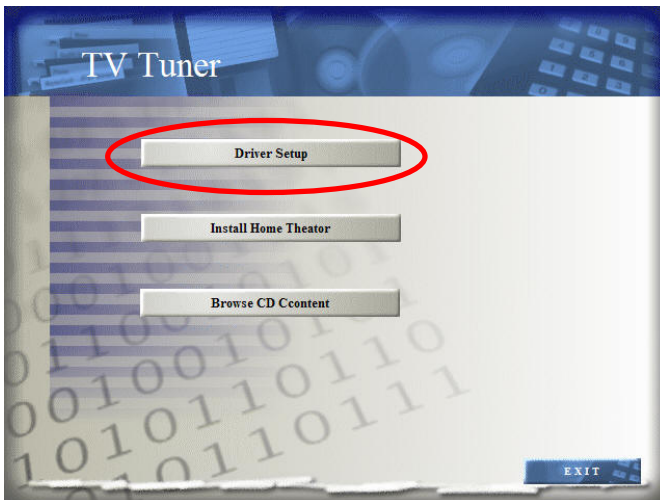
Pin	Signal	Pin	Signal
1	CIN1	2	YIN1
3	GND	4	GND
5	YIN3	6	GND
7	EXT_IN_R	8	EXT_IN_L
9	GND		

1.8 Driver Installation

AAEON appreciates you purchase our Mini PCI video Capture Module. We strongly recommend that you follow the steps below to complete the installation.

1. Put the CD into the CD-ROM drive. The TV Tuner setup menu should show up in a few seconds if your machine currently has CD-ROM autorun enabled. Otherwise, change to CD-ROM directory, and double click on “TVTuner.exe” to execute the setup. Click

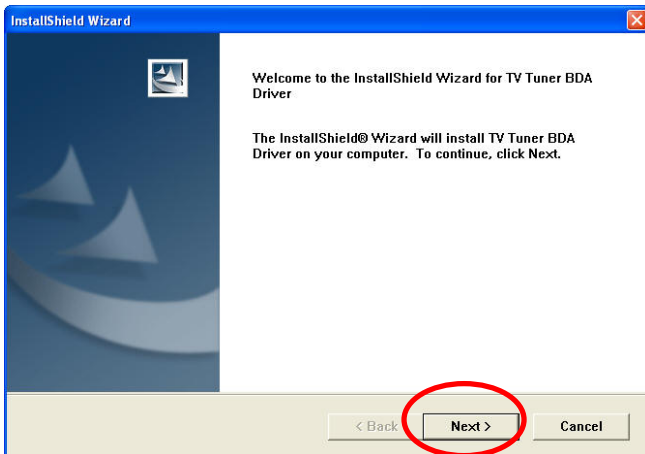
Driver Setup.



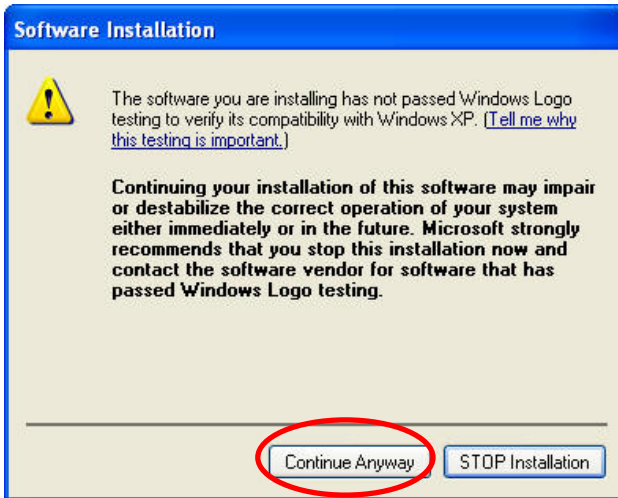
2. Click **Install Driver** on the following screen.



3. Click **Next** to continue.



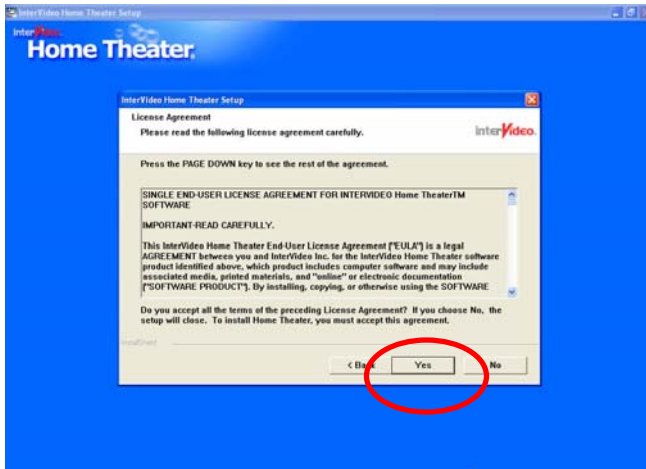
4. When showing the following dialogue, click **Continue Anyway** and the driver will be installed automatically.



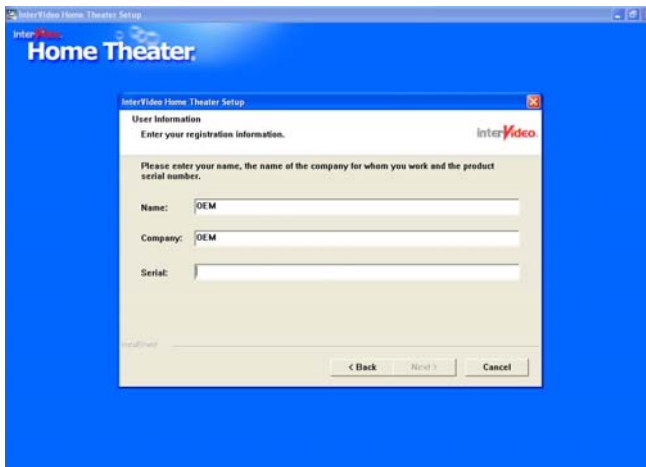
5. After installing driver, go back to TV Tuner setup menu to install Home Theater. Click **Next**.



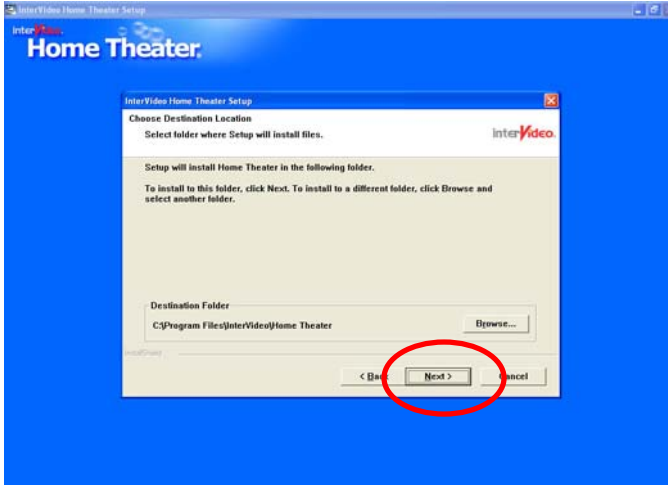
6. Click **Yes** to continue.



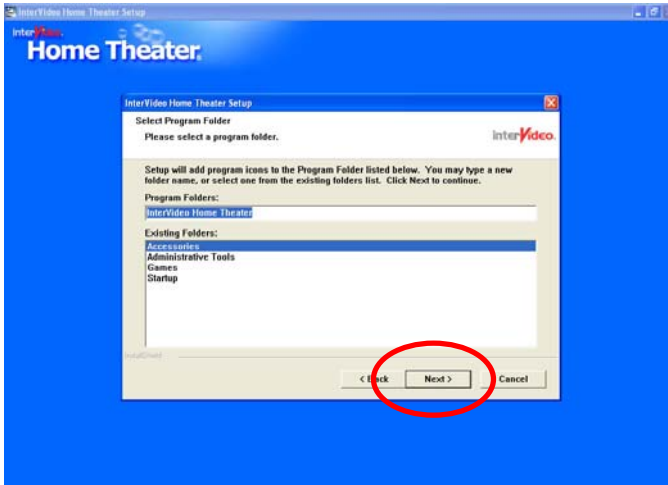
7. In the process of installing Home Theater, the CD-key is required. Please check the back cover of the CD wrapper to get it.



8. Click **Next** to proceed



9. Click **Next** to proceed



10. Click **Finish** to complete the Setup.

