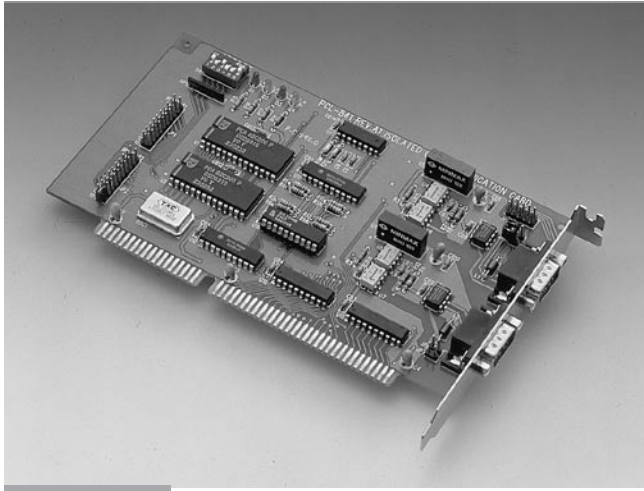


PCL-841

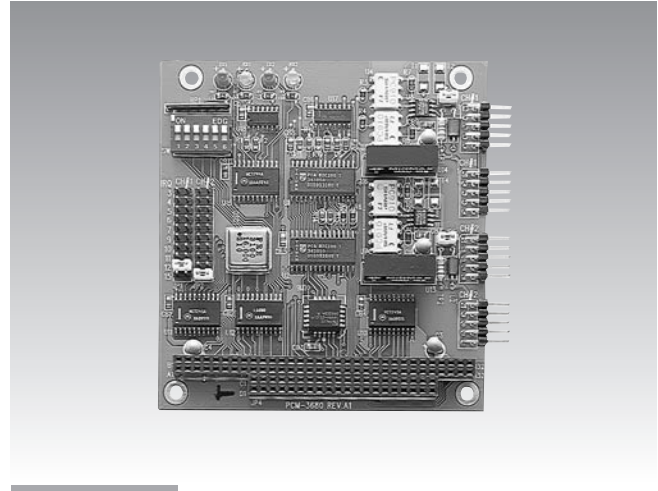
PCM-3680

2-port CAN-bus ISA Card with Isolation Protection

2-port CAN-bus PC/104 Module with Isolation Protection



PCL-841



PCM-3680



Features

- Operates two separate CAN networks at the same time
- High speed transmission up to 500 kbps
- 16 MHz CAN controller frequency
- Optical isolation protection of 1000 V_{DC} ensures system reliability
- Wide IRQ selection for each port: IRQ 3, 4, 5, 6, 7, 9, 10, 11, 12, 15
- LEDs indicate Transmit/Receive status on each port
- Direct memory mapping enables very fast access to the CAN controllers
- Windows® DLL library and examples included
- Supports Windows® 95/98/2000/XP and Linux

Specifications

General

- Card Interface** ISA
- Certifications** CE
- Connectors** 2 x DB9-M
- Dimensions** 185 x 100 mm (7.3" x 3.9") (PCL-841)
- Ports** 2
- Power Consumption** +5 V @ 400 mA typical, 950 mA max.
- Weight (Gross)** 0.6 kg (1.3 lb)

Communications

- CAN Controller** SJA-1000
- CAN Transceiver** 82C250
- Protocol** CAN2.0 A/B
- IRQ** 3, 4, 5, 6, 7, 9, 10, 11, 12 or 15
- Memory Segment Base Address** From C800H to EF00H
- Signal Support** CAN_H, CAN_L

Protection

- Isolation Protection** 1,000 V_{DC}

Environment

- Operating Temperature** 0 ~ 50° C (32 ~ 122° F)

Ordering Information

- PCL-841-A** Dual-port Isolated CAN-bus Interface Card

Features

- Operates two separate CAN networks at the same time
- High speed transmission up to 500 kbps
- 16 MHz CAN controller frequency
- Optical isolation protection of 1000 V_{DC} ensures system reliability
- Wide IRQ selection for each port: IRQ 3, 4, 5, 6, 7, 9, 10, 11, 12, 15
- LEDs indicate Transmit/Receive status on each port
- Direct memory mapping enables very fast access to the CAN controllers
- Windows DLL library and examples included
- Supports Windows 95/98/2000/XP and Linux

Specifications

General

- Card Interface** PC/104
- Certifications** CE
- Connectors** 2 x DB9-M w/cable
- Dimensions** 90 x 96 mm (3.6" x 3.8")
- Ports** 2
- Power Consumption** +5 V @ 400 mA

Communications

- CAN Controller** SJA-1000
- CAN Transceiver** 82C250
- Protocol** CAN2.0 A/B
- IRQ** 3, 4, 5, 6, 7, 9, 10, 11, 12 or 15
- Memory Segment Base Address** From C800H to EF00H
- Signal Support** CAN_H, CAN_L

Protection

- Isolation Protection** 1,000 V_{DC}

Environment

- Operating Temperature** 0 ~ 65° C (32 ~ 122° F)

Ordering Information

- PCM-3680-A** Dual-port Isolated CAN Interface Module