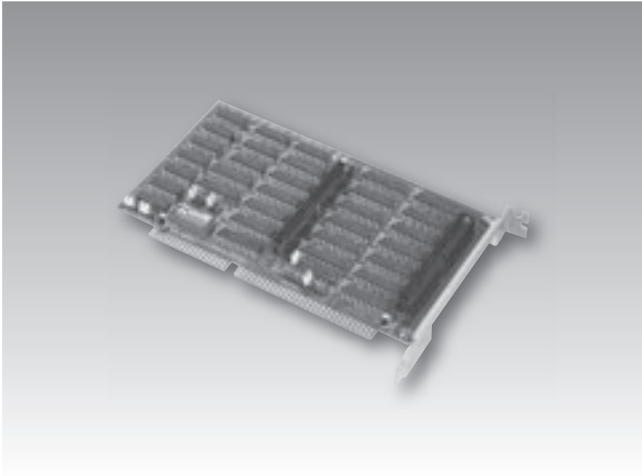


PCL-731

48-ch Digital I/O ISA Card



Features

- 48 TTL digital I/O channels
- Emulates mode 0 of 8255 PPI
- Interrupt handling
- Opto-22 compatible 50-pin connectors
- Output status readback

Specifications

Digital Input

- **Channels** 48 (shared with output)
- **Compatibility** 5 V/TTL
- **Input Voltage** Logic 0: 0.8 V max.
Logic 1: 2.0 V min.
- **Interrupt Capable Ch.** 2

Digital Output

- **Channels** 48 (shared with input)
- **Compatibility** 5 V/TTL
- **Output Voltage** Logic 0: 0.4 V max.
Logic 1: 2.4 V min.
- **Output Capability** Sink: 0.4 V max. @ 24 mA
Source: 2.4 V min. @ 15 mA

General

- **Bus Type** ISA
- **I/O Connectors** 2 x 50-pin male ribbon-cable connectors
- **Dimensions (L x H)** 185 x 100 mm (7.3" x 3.9")
- **Power Consumption** Typical: +5 V @ 0.5 A
Max: +5 V @ 0.8 A
- **Operating Temperature** 0 ~ 60° C (32 ~ 140° F)
- **Storing Temperature** -20 ~ 70° C (-4 ~ 158° F)
- **Storing Humidity** 5 ~ 95% RH, non-condensing (refer to IEC 68-2-3)

Ordering Information

- **PCL-731** 48-ch TTL Digital I/O Card
- **PCL-10150-1.2** IDC-50 Flat Cable, 1.2 m
- **PCLD-782B** 16/24-ch Opto-isolated DI Board
- **PCLD-785B** 16/24-ch Relay Output Terminal
- **PCLD-7216** 16/24-ch Relay Output Terminal
- **PCLD-885** 16-ch Power Relay Output Terminal
- **ADAM-3950** 50-pin Flat Cable Terminal, DIN-rail Mount