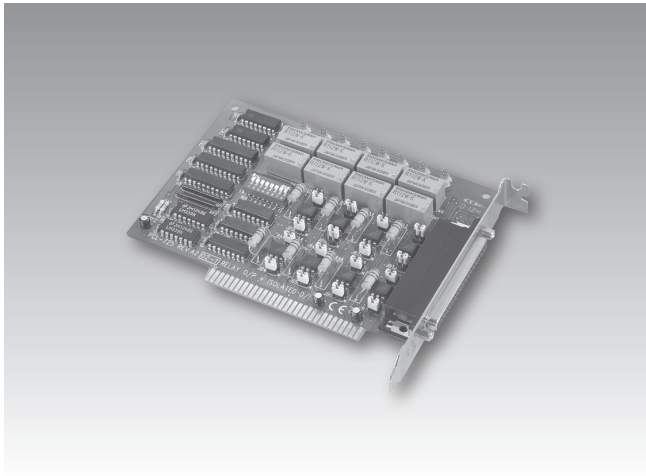


# PCL-725

## 8-ch Relay and 8-ch Isolated Digital Input ISA Card



### Features

- 8 x relay output channels and 8 x isolated digital input channels
- LED indicators to show activated relays
- 4 x Form C and 4 x Form A type relay output channels
- Male DB37 matching connector included
- Output status read-back

### Introduction

The PCL-725 Relay Actuator & Isolated D/I card offers 8 relay actuators and 8 opto-isolated digital inputs on a single board. Typically, the onboard relays can serve as ON/OFF control devices or small power switches. The 8 x opto-isolated D/I channels are ideal devices for collecting digital inputs under noisy environment or floating potential. Also, the 8 x isolated inputs provide the best method to prevent any ground loop problems.

For easy monitoring, each relay is equipped with one red LED to reflect its ON/OFF status. Each input channel is jumper selectable to either isolated or non-isolated input. Access to input and output channels is made possible through an onboard 37-pin D type connector.

### Specifications

#### Isolated Digital Input

- **Channels** 8
- **Input Voltage** Logic 0: 3 V max.  
Logic 1: 5 V min. (30 V max.).
- **Interrupt Capable Ch.** 8
- **Isolation Protection** 1500 V<sub>DC</sub>
- **Overvoltage Protection** 70 V<sub>DC</sub>
- **Opto-Isolator Response** 25 μs
- **Input Resistance** 560 Ω
- **Input Current** 42 mA @ 24 V

#### Relay Output

- **Channels** 8
- **Relay Type** SPDT (4 x Form C, and 4 x Form A)
- **Contact Rating** 120 V<sub>AC</sub> @ 0.5 A, or 30 V<sub>DC</sub> @ 1 A
- **Relay on Time** 8 ms max
- **Relay off Time** 8 ms max
- **Life Span** 1 x 10<sup>7</sup>
- **Resistance**  
Contact: 50 MΩ  
Insulation: 100 MΩ min.

#### General

- **Bus Type** ISA
- **I/O Connectors** 1 x 37-pin D-type
- **Dimensions (L x H)** 147 x 100 mm (5.75" x 3.9")
- **Power Consumption** +5 V @ < 0.2 A; +12 V @ 33 mA for each relay  
< 0.27 A if all eight relays are energized
- **Operating Temperature** 0 ~ 60° C (32 ~ 140° F) (IEC 68-2-1, 2)
- **Storing Temperature** -20 ~ 70° C (-4 ~ 158° F)
- **Storing Humidity** 5 ~ 95 % RH, non-condensing (IEC 68-2-3)

### Ordering Information

- **PCL-725** 8-ch Relay Actuator/Isolated DI Card
- **PCL-10137-1** DB37 cable assembly, 1 m
- **PCL-10137-2** DB37 cable assembly, 2 m
- **PCL-10137-3** DB37 cable assembly, 3 m
- **ADAM-3937** DB37 Wiring Terminal for Din-rail Mounting
- **PCLD-880** Universal screw terminal board