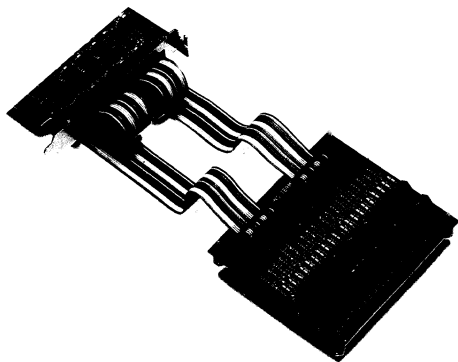


PCLD-780 Screw Terminal Board



INTRODUCTION

The PCLD-780 is a universal screw terminal board which provides convenient connection points for any 20-pin flat cable connector ports of PC-LabCard. When connected to a mother board with two flat ribbon cables, the PCLD-780 provides straight connections for analog or digital I/O signals.

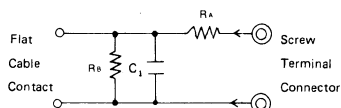
It was designed specifically to accommodate the requirements for passive signal conditioning components. For example, the user may easily implement low-pass filter, attenuator and current shunt functions by adding resistors and capacitors on the reserved circuit pads.

FEATURES

- Low-cost universal screw terminal board for various PC-LabCards using 20-pin flat ribbon cable I/O ports
- 40 terminal points for two 20-pin flat cable connector ports
- Reserved space for signal conditioning circuits like low-pass filter, current shunt and voltage attenuator
- Screw clamp terminal blocks permit easy and reliable connection of signals
- Table-top mounting using nylon standoffs
Screws and washers provided for panel or wall mounting
- Size: 10.16 cm (L) x 11.43 cm (W) (4"x4.5")

APPLICATIONS

- Field wiring for analog and digital, input and output ports of PC-LabCard which employs the standard 20-pin flat cable connector
Add signal conditioning circuits as examples given below:



- a) Straight-through connection (Factory Setting):

$R_A = 0$ ohm jumper
 $R_B = \text{none}$
 $C_1 = \text{none}$

- b) 1.6 KHz (3 dB) low pass filter:

$R_A = 10\text{K ohm}$
 $R_B = \text{none}$
 $C_1 = 0.01 \mu\text{F}$

$$f_{3\text{dB}} = \frac{1}{2\pi R_A C_1}$$

- c) 10:1 voltage attenuator:

$R_A = 9\text{ Kohm}$
 $R_B = 1\text{ Kohm}$
 $C_1 = \text{none}$

$$\text{Attenuation} = \frac{R_B}{R_A + R_B}$$

(Assume source impedance $\ll 10\text{ Kohm}$)

- d) 4-20 mA to 1-5 VDC signal converter:

$R_A = 0$ ohm jumper
 $R_B = 250$ ohm (0.1% precision resistor)
 $C_1 = \text{none}$

ORDERING INFORMATION

- PCLD-780:** Screw Terminal Board

Accessories Furnished: Two 1 meter 20-pin flat cable assembly (P/N PCL-10120-1), nylon standoffs for table-top mounting, screws and washers for panel mounting.

Accessories Available:

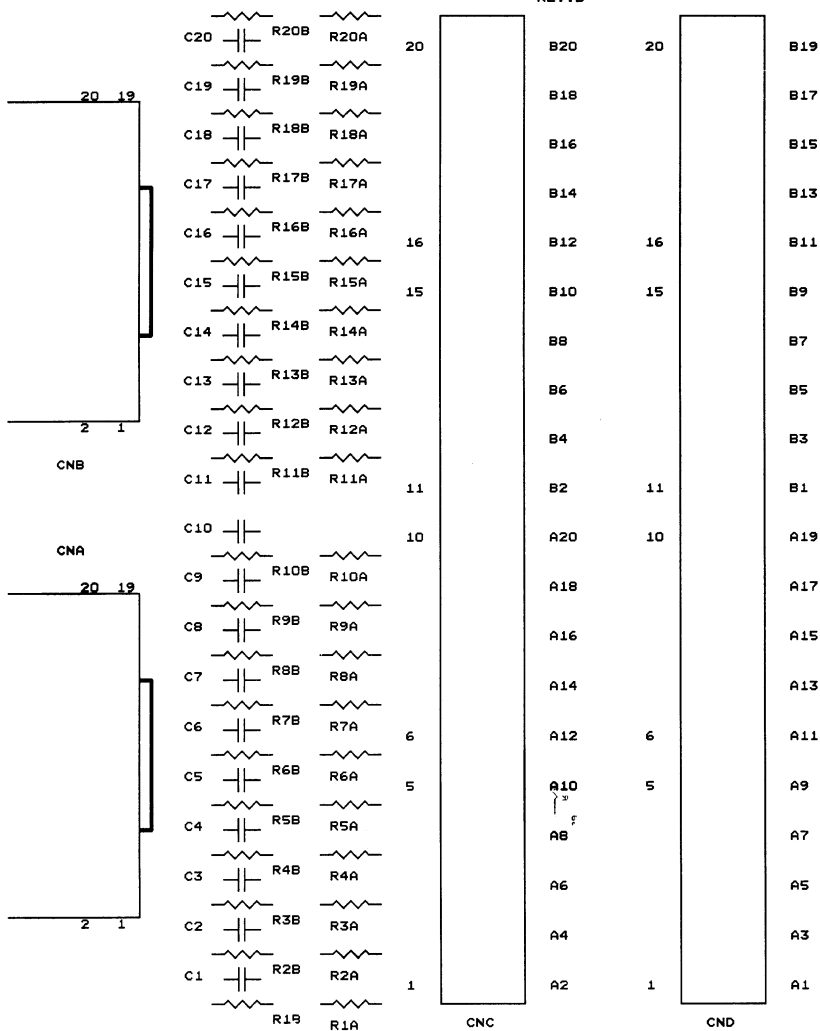
- PCL-10120-1: 20 pin flat cable assembly, 1 m
 PCL-10120-2: 20 pin flat cable assembly, 2 m
 PCL-10120-0.7: 20 pin flat cable assembly, 0.7 m

PCLD-780

WIRING

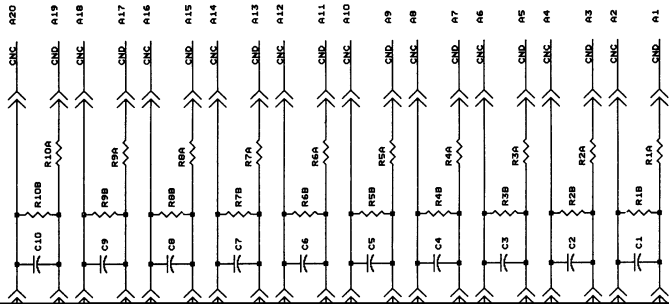
TERMINAL
REV. B

BOARD



ADVANTECH CO., LTD

Size Document Number		REV
B	PCLD-780	B1
Date:	March 6, 1990	Sheet 1 of 2



TITLE ADVANTECH CO., LTD.

WIRING TERMINAL BOARD

WIRING DOCUMENT NUMBER

PCLD-780

REV. 5, 1980 SHEET 2 OF 2