



RAM[®] MOUNTS

Material Handling



about RAM® Mounts

For more than 20 years, RAM® Mounts has led the material handling industry with our rugged design and unique mounting solutions for tablets, scanner guns, vehicle-mounted computers, radios and phones. RAM® offers a modular line of mounting solutions for all types of rails, vehicles, devices and environments. The high-strength bases utilize a rubber ball and socket system that offers world-class vibration dampening and shock absorption. RAM® Mounts are made in the USA and backed by a lifetime warranty.

the RAM® difference



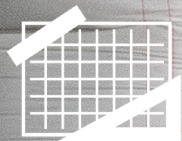
Lifetime Warranty

RAM® products are backed by a lifetime warranty against manufacturer's defect for decades of worry-free use.



Modular Design

The rubber ball and socket design offers a secure hold with vibration dampening and component interchangeability.



Designed & Developed in House

Each RAM® Mount is designed in house using the most advanced industry techniques.



Made in the USA

Every single RAM® Mount is manufactured in the USA with an attention to detail and quality.



3-D Printing

RAM® is a pioneer in using 3-D printing technology to develop and test new products.



Aluminum Die Casting & Injection Molding

RAM® Mounts are made to last a lifetime with the highest quality aluminum, composites, and other materials.

our partners

Customer Focus. RAM® owes its success to loyal customers like you. RAM® products are incredibly robust, functional and set the standard for military, commercial, consumer and industrial applications. In addition, RAM® offers mounting solutions so rugged and reliable that they have become a favorite within the material handling industry.

OEMs Trust RAM®. RAM® Mounts isolate and dampen harmful shock and vibration. OEMs know that pairing their products with RAM® means their products will perform better and last longer in a wide range of applications and environments.

Safe, Secure Mounting. RAM® Mounts help you get the most out of your devices and the task at hand. The unique rubber ball and socket design prevents slippage while protecting your device from harmful shock in high vibration situations.

Fit to Your Needs. With thousands of mounting configurations to choose from, RAM® is sure to have the ideal solution for your device mounting needs. Trust in RAM® to offer you the most versatile and robust mounting solution available.

RAYMOND

CROWN

ZEBRA

Honeywell

ADVANTECH **DIG**
Competence in Mobile Computing

I.D. Systems™

NEWCASTLE
SYSTEMS

ORLACO
Specialised Camera Solutions



table of contents

Bases	6
Arms	17
Cradle/Device Adapters	19
Cradles	25
Post Clamps	35
Accessories	37
IntelliSkin™ with GDS Tech™	43
Partner Highlights	57
Compatibility Chart	63
Advantech	63
AML	67
Glacier	68
Honeywell	69
JLT	75
Mobile Demand	77
Noax	79
Panasonic	80
Winmate	83
Xplore	84
Zebra	86



how it works

Choose a base.

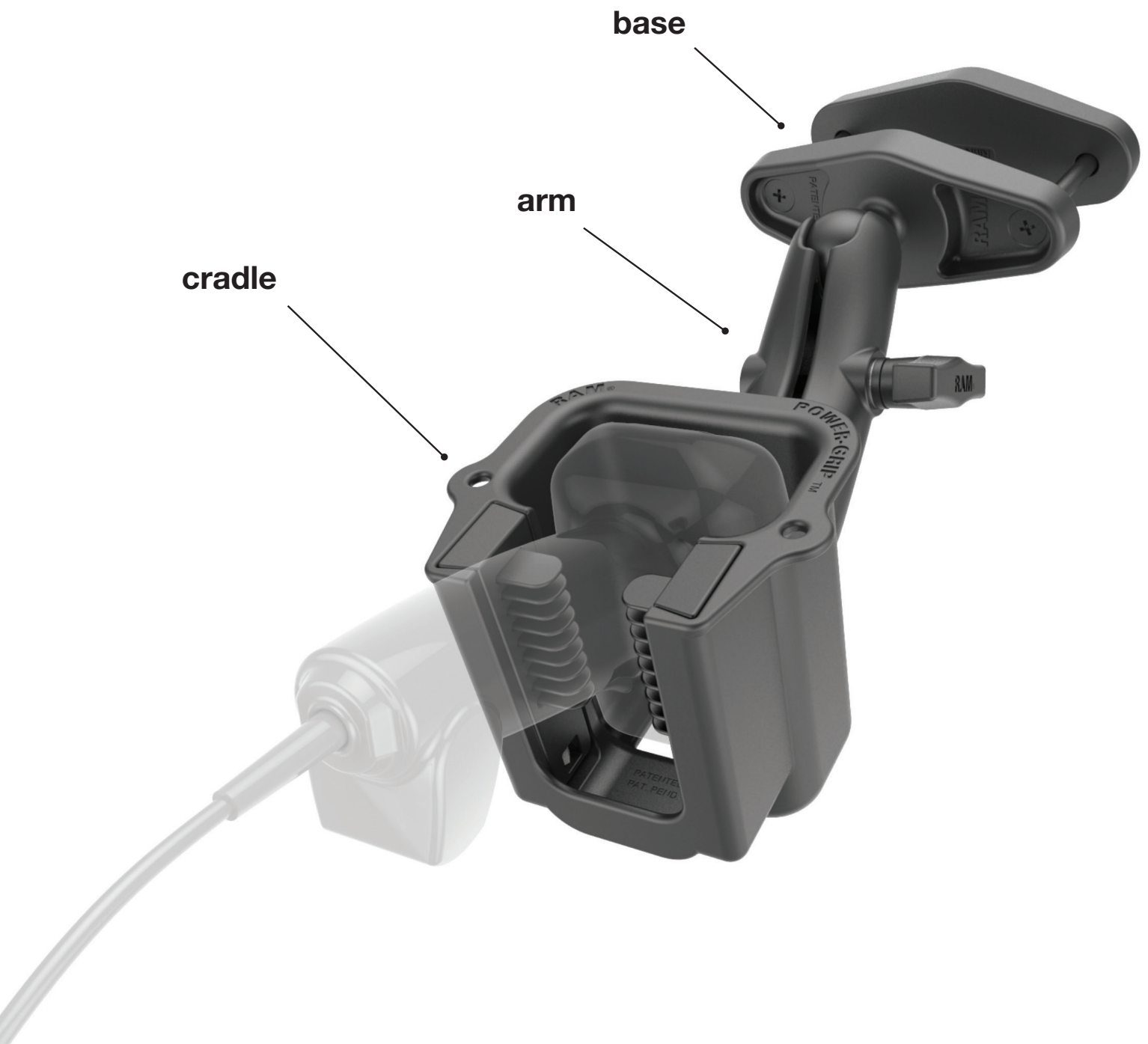
Choose from a variety of bases to help secure your device where you need it.

Choose an arm.

Choose an arm based on your desired length and placement.

Choose a cradle.

RAM® offers a wide selection of cradles and adapters for your specific device.



select ball size

Ball Size Selection Guide

Each ball size in the RAM® Mounts rubber ball and socket system supports a different amount of weight and withstands increasingly intense vibration. Use the guide below to determine the ideal size for your system based on your device weight and application. RAM® recommends moving up a ball size in environments with extreme shock and vibration.



VIBRATION DAMPENING



MODULAR



ADJUSTABLE



SLIP RESISTANT



1" Diameter Ball

B Size

Holds up to 2lbs
Ideal for cup holders, cameras and other light-weight devices



1.5" Diameter Ball

C Size

Holds up to 4lbs
Ideal for tablets, 2D barcode scanners and light-weight laptops



2.25" Diameter Ball

D Size

Holds up to 10lbs
Ideal for vehicle-mounted computers and rugged laptops with moderate vibration and shock



3.38" Diameter Ball

E Size

Holds up to 25lbs
Ideal for vehicle-mounted computers and rugged laptops with extreme vibration and shock

seen in this photo:

RAM-247U-25 (square rail clamp)

RAM-201U (standard length arm)

RAM-202U (round base)





Forklift Overhead Guard Plates

The overhead guard is a convenient location for attaching vehicle-mounted computers, printers, scanners and tablets. Utilizing two identical stamped steel plates, the plates fasten to most lift cages and overhead guards. This sturdy mount allows for the attachment of bases with any diameter ball. The plates include the spacing 100x100mm and 75x75mm VESA hole patterns as well as the AMPs 4-hole pattern. Multiple ball bases may be attached to the same plate to keep all your devices in a convenient location.

Part Number	Includes
RAM-335	Overhead guard plates
RAM-335-246	with 1.5" (C) ball base
RAM-335-D-246	with 2.25" (D) ball base
RAM-335-E-246	with 3.38" (E) ball base



seen in this photo:
RAM-335-D-246 (overhead guard plates)
RAM-D-201U-C (short arm)
RAM-D-254U (round base)
RAM-201U (standard length arm)
RAM-202U (round base x2)
RAP-396U (Power-Grip™ scanner gun cradle)



Tough-Claw™

The RAM® Tough-Claw™ is the perfect mounting base for quick and easy installation and removal without tools on round, square or odd shaped rails and bars. The Tough-Claw™ can be clamped on rails from .625" to 2.25" in outer diameter. Ideal for mounting tablets, scanners, radios or other accessories, the Tough-Claw™ is a versatile solution that can be quickly removed or adjusted to fit any scenario.

Part Number	Ball Size	Fits Rails
RAP-B-400U	1" (B)	.625" - 1.5" diameter
RAP-B-404U	1" (B)	1" - 1.875" diameter
RAP-B-401U	1" (B)	1" - 2.25" diameter
* RAP-B-401LU	1" (B)	1" - 2.25" diameter
RAP-400U	1.5" (C)	.625" - 1.5" diameter
RAP-404U	1.5" (C)	1" - 1.875" diameter
RAP-401U	1.5" (C)	1" - 2.25" diameter
* RAP-401LU	1.5" (C)	1" - 2.25" diameter

*keyed locking version



Torque™

The RAM® Torque™ base is a low-profile attachment for rails and tubing. Sizing inserts are included to provide a snug fit and protection of the rail. The mount utilizes nylon-insert locknuts to prevent loosening in high vibration environments.

Part Number	Ball Size	Fits Rails
RAM-B-408-75-1U	1" (B)	.75" - 1" diameter
RAM-408-75-1U	1.5" (C)	.75" - 1" diameter
RAM-B-408-112-15U	1" (B)	1.125" - 1.5" diameter
RAM-408-112-15U	1.5" (C)	1.125" - 1.5" diameter

how to measure your rail





Square Rail Clamp

This base allows you to attach any size RAM® ball to the overhead guard leg or overhead guard. Measure your rail and compare with the chart below to determine the appropriate clamp.

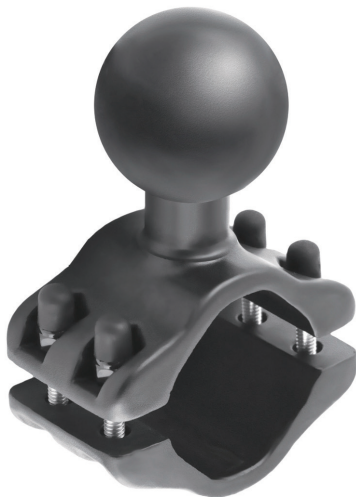
Part Number	Ball Size	Bolt to Bolt Dimension	Max. Plate to Plate Dimension
RAM-B-247U-15	1" (B)	1.5"	2.125"
RAM-B-247U-17	1" (B)	1.75"	2.125"
RAM-B-247U-2	1" (B)	2"	2.125"
RAM-B-247U-25	1" (B)	2.5"	2.125"
RAM-B-247U-3	1" (B)	3"	1.875"
RAM-B-247U-4	1" (B)	4"	2.125"
RAM-247U-15	1.5" (C)	1.5"	2.125"
RAM-247U-17	1.5" (C)	1.75"	2.125"
RAM-247U-2	1.5" (C)	2"	1.875"
RAM-247U-25	1.5" (C)	2.5"	2.125"
RAM-247U-3	1.5" (C)	3"	1.875"
RAM-247U-4	1.5" (C)	4"	1.875"
RAM-247U-5	1.5" (C)	5"	1.75"
RAM-D-247U-15	2.25" (D)	1.5"	2.125"
RAM-D-247U-17	2.25" (D)	1.75"	2.125"
RAM-D-247U-2	2.25" (D)	2"	1.875"
RAM-D-247U-25	2.25" (D)	2.5"	2.125"
RAM-D-247U-3	2.25" (D)	3"	2"
RAM-D-247U-4	2.25" (D)	4"	1.75"
RAM-D-247U-5	2.25" (D)	5"	1.75"
RAM-E-247U-25	3.38" (E)	2.5"	1.75"



Square Rail Clamp without Hardware

The no-hardware configuration of the square rail clamp enables you to customize the mount to a variety of rail thicknesses and use cases. Select a base that fits one side of your rail and use your own 5/16" diameter hardware to attach the plates together. You can also bolt into walls or other flat surfaces to provide modular mounts throughout the yard and warehouse.

Part Number	Ball Size	Bolt to Bolt Dimensions
RAM-B-247U-2NH	1" (B)	2"
RAM-B-247U-3NH	1" (B)	3"
RAM-247U-25NH	1.5" (C)	2.5"
RAM-247U-4NH	1.5" (C)	4"
RAM-247U-5NH	1.5" (C)	5"



Round Rail Clamp

Secure your mount on any round rail to ensure that your tablet, inventory management device or scanner is at the ready. With two clamp and ball sizes this mounting solution fits most round overhead guard legs and holds a variety of device weights.

Part Number	Ball Size	Fits Rails
RAM-271U-12	1.5" (C)	1.25" - 1.875" diameter
RAM-271U-2	1.5" (C)	2" - 2.5" diameter
RAM-D-271U-12	2.25" (D)	1.25" - 1.875" diameter
RAM-D-271U-2	2.25" (D)	2" - 2.5" diameter

seen in this photo:

RAM-D-271U-2 (round rail clamp)

RAM-D-201U (standard length arm)

RAM-D-202U (round ball)

RAM-202U-IN10 (keyboard bracket for Honeywell CV31)

RAM-202U (round base)

RAM-201U-B (short arm)

custom keyboard bracket for Honeywell made by RAM®



bases

seen in this photo:

RAM-101U (double ball and socket mount)

RAM-HOL-TABL20U (Tab-Lock™ cradle)





Bolt Down

RAM® offers versatile bases in many sizes and shapes that can be bolted down onto any flat surface. Each base includes mounting holes including the AMPs and VESA standard patterns for a variety of mounting options.

Part Number	Ball Size	Base Dimensions	Hole Pattern
RAM-B-202U	1" (B)	2.5" diameter round	1.5" x 1.188" AMPs 3 holes at 120 degrees
* RAM-202U-IN1	1.5" (C)	2.5" diameter round	1.5" x 1.188" AMPs 3 holes at 120 degrees
* RAM-D-202U-IN1	2.25" (D)	3.68" diameter round	2 holes at 180 degrees 3 holes at 120 degrees
* RAM-E-202U-IN1	3.38" (E)	3.68" diameter round	2 holes at 180 degrees 3 holes at 120 degrees
RAM-246U	1.5" (C)	4.75" square	75x75mm and 100x100mm VESA hole patterns
* RAM-D-246U-IN1	2.25" (D)	4.75" square	75x75mm and 100x100mm VESA hole patterns
* RAM-E-246U-IN1	3.38" (E)	4.75" square	75x75mm and 100x100mm VESA hole patterns
* RAM-2461U-IN1	1.5" (C)	3.625" square	75x75mm VESA hole pattern 2 slotted holes
RAM-D-2461U	2.25" (D)	3.625" square	75x75mm VESA hole pattern 2 slotted holes

*steel reinforced post



Twist-Lock™ Suction Cups

RAM® Mounts offers a variety of suction cup mounts that are designed to keep your equipment secure with a flexible mounting option for glass and non-porous surfaces. The mechanical Twist-Lock™ seal of the suction cup latches onto flat surfaces with a strong connection that is resistant to temperature fluctuations and lateral forces.



Part Number

RAM-B-224-1U

Ball Size

1" (B)



Part Number

RAM-224U

Ball Size

1.5" (C)



Part Number

RAM-B-189B-202U

Ball Size

1" (B)



Part Number

RAM-B-189B-ALA1U

Ball Size

1" (B)



Part Number

RAM-224-3U

Ball Size

1.5" (C)



Part Number

RAP-365-224-1U

Ball Size

1.5" (C)



U-Bolt

The u-bolt mount offers a secure, low-profile mounting solution that is a perfect fit in tight spaces such as on rails with low-clearance. With the option of three ball diameters and double u-bolt configurations for rough environments, there is a u-bolt for every use case.



Part Number	Ball Size	Fits Rails
* RAM-B-231ZU	1" (B)	.5" - 1.25" diameter
* RAM-231ZU	1.5" (C)	.5" - 1.25" diameter
* RAM-B-231-1U	1" (B)	1" - 1.25" diameter
* RAM-231-1U	1.5" (C)	1" - 1.25" diameter
RAM-B-235U	1" (B)	.75" - 1.25" diameter
RAM-235U	1.5" (C)	.75" - 1.25" diameter
RAM-D-235U	2.25" (D)	.75" - 1.25" diameter
RAM-235-1U	1.5" (C)	1.25" - 1.5" diameter
RAM-D-235-1U	2.25" (D)	1.25" - 1.5" diameter

*single u-bolt



Strap Clamp

The strap clamp features a metal strap that provides a firm hold on round rails. Wrap the strap around the rail and base, then tighten the worm-drive clamp with a screwdriver until secure. The rubber strip included with the base protects the rail from damage.

Part Number	Ball Size	Fits Rails
 RAM-B-108BU	1" (B)	1" - 2.1" diameter
 RAM-108BU	1.5" (C)	1" - 2.1" diameter

seen in this photo:

RAM-D-202U-CRO1 (adapter for the Crown Work Assist™)

RAM-D-201U (standard length arm)

RAM-D-254U (round base)

custom Honeywell bracket

RAM-202U (round ball)

RAM-201U (standard length arm)

custom keyboard bracket for Honeywell made by RAM®



Arm Sizes

RAM® Mounts feature a double-ball and socket system, providing modularity and adjustability. RAM® arms connect your base to your device and are available in multiple sizes enabling an ergonomic installation. Use the chart below to compare arm lengths based on your ball diameter.



VIBRATION DAMPENING



MODULAR



ADJUSTABLE



SLIP RESISTANT



B Size

Part Number	Overall Length	Socket to Socket
RAM-B-201U-A	2.38"	1.75"
RAM-B-201U	3.69"	3"
RAM-B-201U-C	6"	5.25"



C Size

Part Number	Overall Length	Socket to Socket
RAM-201U-B	3.5"	2.25"
RAM-201U	5.625"	4.5"
RAM-201U-D	9.125"	8"



D Size

Part Number	Overall Length	Socket to Socket
RAM-D-201U-C	5.0625"	3.1875"
RAM-D-201U	8.375"	6.5625"
RAM-D-201U-E	12.875"	11.1875"



E Size

Part Number	Overall Length	Socket to Socket
RAM-E-201U-D	7.25"	4.375"
RAM-E-201U	12.625"	9.875"

cradle/device adapters



seen in this photo:

RAM-335-D-246 (overhead guard plates)

RAM-D-201U-C (short arm)

RAM-D-254U (round base)

custom Honeywell bracket

RAM-101U (double ball and socket mount)

RAP-396U (Power-Grip™ scanner gun cradle)

custom keyboard bracket for Honeywell made by RAM®

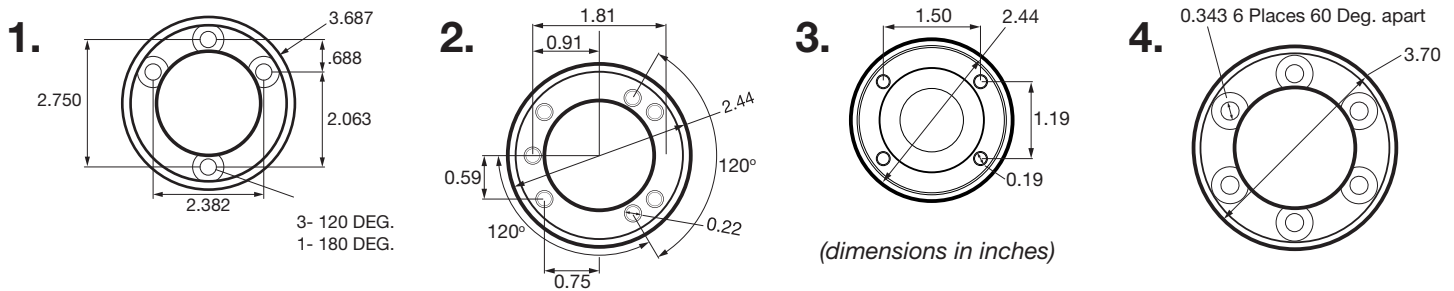
cradle/device adapters



Round Adapters

Connect your tablet, vehicle-mounted computer or printer to the RAM® Mounts modular system with one of our cradle and device adapters.

The round adapter integrates multiple mounting holes to hold devices such as the Honeywell Thor VM3 and cradles such as the Tab-Lock™.



Part Number	Ball Size	Base Dimensions	Drawing Reference
RAM-B-202U	1" (B)	2.5" diameter round	Drawing 2
* RAM-202U-IN1	1.5" (C)	2.5" diameter round	Drawing 2
RAM-202U	1.5" (C)	2.5" diameter round	Drawing 2
* RAM-D-202U-IN1	2.25" (D)	3.68" diameter round	Drawing 1
RAM-D-202U	2.25" (D)	3.68" diameter round	Drawing 1
RAM-D-202U-SYM1	2.25" (D)	3.68" diameter round	Drawing 4
RAM-D-254U	2.25" (D)	2.4375" diameter round	Drawing 3
* RAM-E-202U-IN1	3.38" (E)	3.68" diameter round	Drawing 1
RAM-E-202U	3.38" (E)	3.68" diameter round	Drawing 1
RAM-E-202U-SYM1	3.38" (E)	3.68" diameter round	Drawing 4

*steel reinforced post

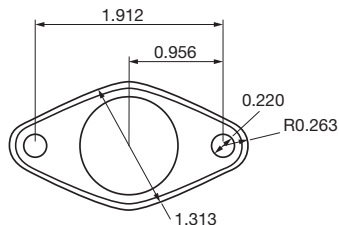
cradle/device adapters



Diamond Adapters

Connect your mobile computer, rugged hand-held or barcode scanner to the RAM® Mounts modular system with one of our cradle and device adapters.

The diamond adapter has a two-hole pattern for a low-profile fit onto cradles for lighter devices such as hand-held computers or scanners.



(dimensions in inches)

Part Number	Ball Size	Base Dimensions
RAM-B-238U	1" (B)	2.43" x 1.31"
RAM-238U	1.5" (C)	2.43" x 1.31"



seen in this photo:
RAM-335-D-246 (overhead guard plates)
RAM-D-201U-C (short arm)
RAM-D-246U (square base)

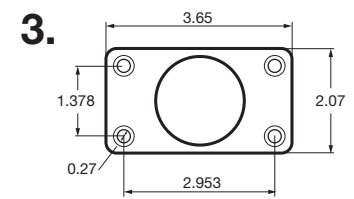
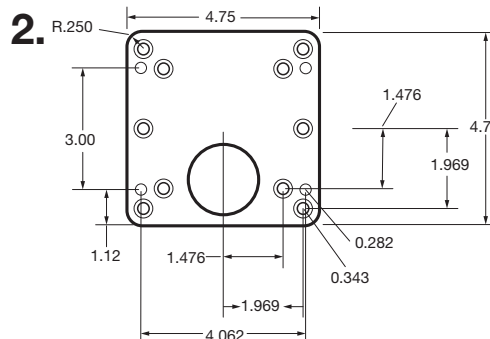
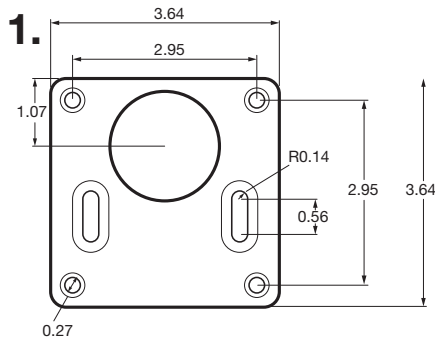
cradle/device adapters



VESA Adapters

Connect your tablet or vehicle-mounted computer to the RAM® Mounts modular system with one of our cradle and device adapters.

The VESA plate adapters are designed for the installation of many of the top vehicle-mounted computer brands such as Zebra, JLT and Glacier.



(dimensions in inches)

Part Number	Ball Size	Base Dimensions	Drawing Reference
RAM-246U	1.5" (C)	4.75" square	Drawing 2
* RAM-D-246U-IN1	2.25" (D)	4.75" square	Drawing 2
RAM-D-246U	2.25" (D)	4.75" square	Drawing 2
* RAM-E-246U-IN1	3.38" (E)	4.75" square	Drawing 2
RAM-E-246U	3.38" (E)	4.75" square	Drawing 2
* RAM-2461U-IN1	1.5" (C)	3.625" square	Drawing 1
RAM-2461U	1.5" (C)	3.625" square	Drawing 1
RAM-D-2461U	2.25" (D)	3.625" square	Drawing 1
RAM-2462U	1.5" (C)	3.6" x 2.1"	Drawing 3
RAM-D-2462U	2.25" (D)	3.6" x 2.1"	Drawing 3

*steel reinforced post

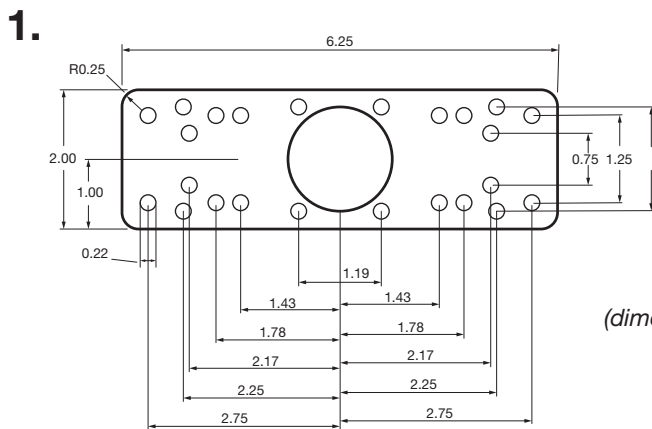
cradle/device adapters



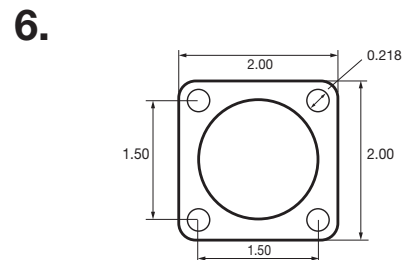
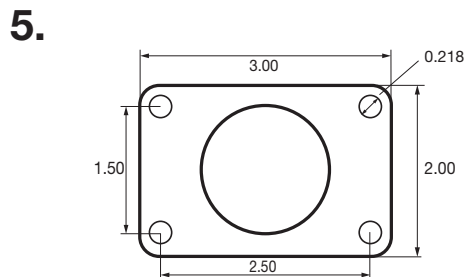
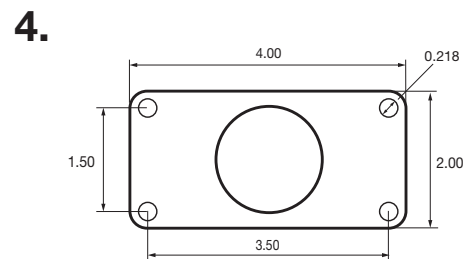
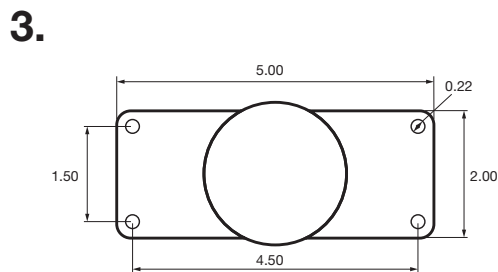
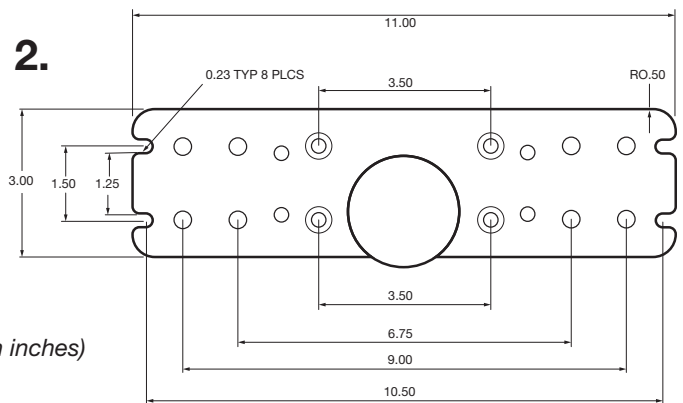
Other Adapters

Connect your vehicle-mounted computer or printer to the RAM® Mounts modular system with one of our cradle and device adapters.

These adapters offer a variety of hole patterns for the ultimate flexibility in where you attach the adapter to a device.



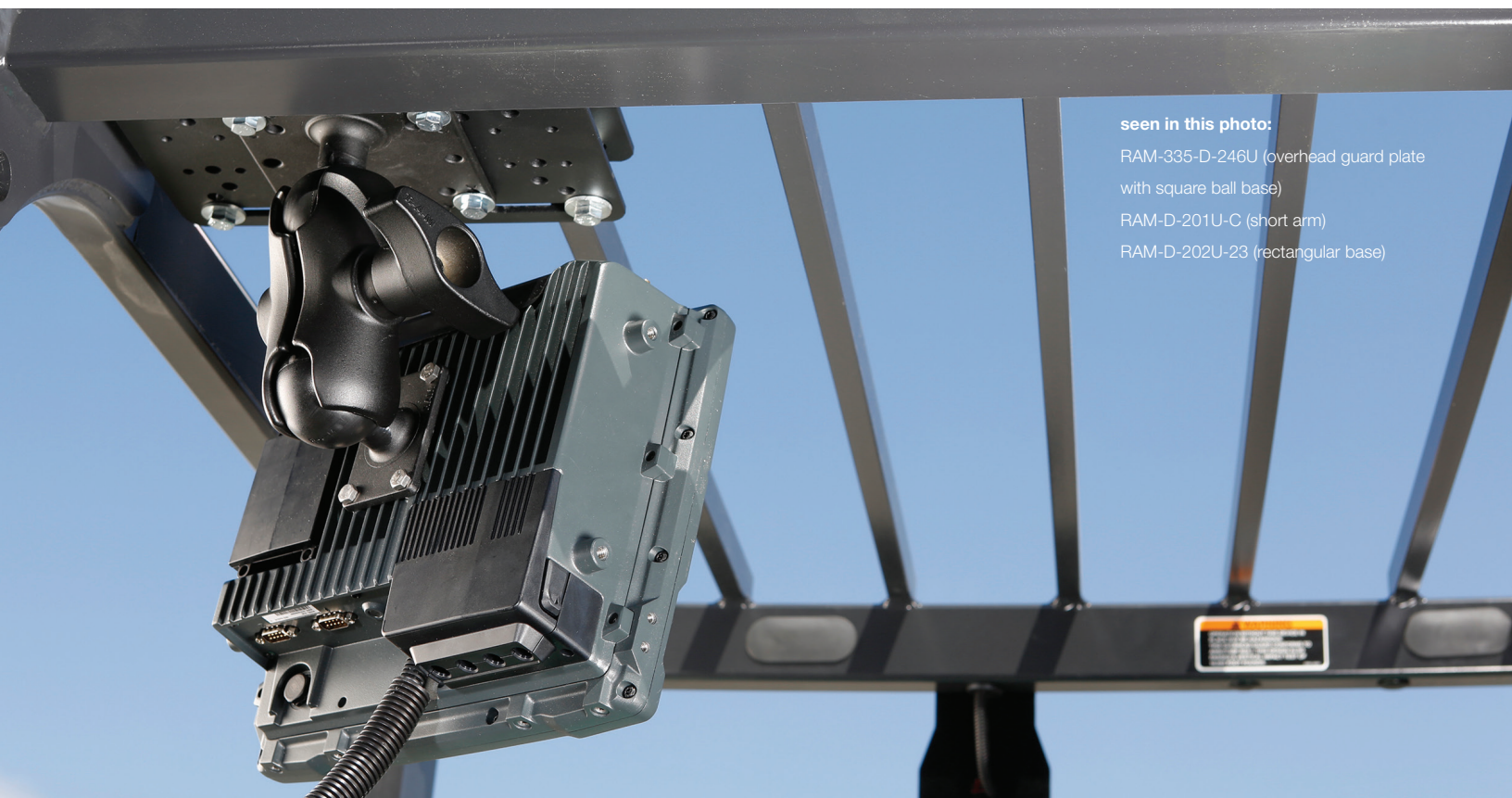
(dimensions in inches)



cradle/device adapters

Part Number	Ball Size	Base Dimensions	Drawing Reference
RAM-111BU	1.5" (C)	6.25" x 2"	Drawing 1
RAM-137BU	1.5" (C)	11" x 3"	Drawing 2
* RAM-D-111B-IN1U	2.25" (D)	11" x 3"	Drawing 2
RAM-202U-22	1.5" (C)	2" x 2"	Drawing 6
RAM-202U-23	1.5" (C)	2" x 3"	Drawing 5
RAM-202U-24	1.5" (C)	2" x 4"	Drawing 4
RAM-202U-25	1.5" (C)	2" x 5"	Drawing 3
RAM-D-202U-22	2.25" (D)	2" x 2"	Drawing 6
RAM-D-202U-23	2.25" (D)	2" x 3"	Drawing 5
RAM-D-202U-24	2.25" (D)	2" x 4"	Drawing 4
RAM-D-202U-25	2.25" (D)	2" x 5"	Drawing 3

*steel reinforced post



seen in this photo:

RAM-335-D-246U (overhead guard plate with square ball base)

RAM-D-201U-C (short arm)

RAM-D-202U-23 (rectangular base)

cradles

seen in this photo:

RAM-202U-CRO1 (adapter for the Crown Work Assist™)

RAM-201U (standard length arm)

RAM-202U (round base)

RAM-HOL-TABL12U (Tab-Lock™ cradle)





Tab-Tite™



Tab-Lock™



X-Grip®



EZ-Roll'r™

Overview of Tablet Solutions

RAM® device cradles secure your tablet in any environment allowing you to implement the technology that your business needs. All cradles utilize the AMPs hole pattern to attach any AMPs-compatible device adapter.



X-Grip® for Phones and Tablets

The X-Grip® is a versatile mount that adapts to the tablet, phone, hand-held device or GPS unit you have chosen for your warehouse or vehicles. The spring-loaded patented grips keep your device steady and in close reach.



Part Number	Ball Size	Width Range	Max Depth
RAM-HOL-UN7BU	1" (B)	1.875" - 3.25"	.875"
RAM-HOL-UN7BCU	1.5" (C)	1.875" - 3.25"	.875"
RAM-HOL-UN10BU	1" (B)	1.75" - 4.5"	.875"
RAM-HOL-UN10BCU	1.5" (C)	1.75" - 4.5"	.875"
RAM-HOL-UN8BU	1" (B)	2.5" - 5.75"	.875"
RAM-HOL-UN8BCU	1.5" (C)	2.5" - 5.75"	.875"
* RAM-HOL-UN9U	N/A	6.25" - 8.1"	.875"
* RAM-HOL-UN11U	N/A	7.25" - 8.75"	.875"

*cradle adapter required and sold separately



Tab-Tite™ and Tab-Lock™ for 7" - 8" Tablets

The Tab-Tite™ and Tab-Lock™ use spring-loaded, interchangeable end cups to hold tablets in place. These cradles can accommodate most protective cases and ruggedized tablets.

The Tab-Lock™ features a keyed lock to secure your tablet and deter theft.

Part Number	Width Range	Height Range	Depth Range	Features
RAM-HOL-TAB-SMU	4" - 5.31" 4" - 5.31" 3.44" - 4.7"	7" - 9.625" 7.375" - 10" 7" - 9.875"	.13" - .56" .13" - 1.06" .13" - .44"	set of 3 end cups non-locking
RAM-HOL-TABL-SMU	4" - 5.31" 4" - 5.31" 3.44" - 4.7"	6.75" - 8.75" 7.125" - 9.125" 6.75" - 8.75"	.13" - .56" .13" - 1.06" .13" - .44"	set of 3 end cups locking
RAM-HOL-TAB2U	4" - 5.31"	7" - 9.625"	.13" - .56"	non-locking
RAM-HOL-TABL2U	4" - 5.31"	6.75" - 8.75"	.13" - .56"	locking
RAM-HOL-TAB4U	4" - 5.31"	7.375" - 10"	.13" - 1.06"	non-locking
RAM-HOL-TABL4U	4" - 5.31"	7.125" - 9.125"	.13" - 1.06"	locking
RAM-HOL-TAB5U	3.44" - 4.7"	7" - 9.875"	.13" - .44"	non-locking
RAM-HOL-TABL5U	3.44" - 4.7"	6.75" - 8.75"	.13" - .44"	locking
RAM-HOL-TAB11U for iPad mini 1-3	5.06" - 5.31"	6.8" - 10.55"	.13" - .56"	non-locking retains factory charging cable
RAM-HOL-TABL11U for iPad mini 1-3	5.06" - 5.31"	6.55" - 9.8"	.13" - .56"	locking retains factory charging cable
RAM-HOL-TAB12U	5.06" - 5.68"	7.125" - 9.5"	.13" - 1"	non-locking
RAM-HOL-TABL12U	5.06" - 5.68"	6.75" - 8.75"	.13" - 1"	locking
RAM-HOL-TAB16U	3.625" - 5.05"	7.5" - 9.875"	.13" - .82"	non-locking

RAM-HOL-TABL16U	3.625" - 5.05"	7.25" - 9.875"	.13" - .82"	locking
RAM-HOL-TAB18U	3.75" - 4.7"	7.5" - 10.125"	.13" - .43"	non-locking
RAM-HOL-TABL18U	3.75" - 4.7"	7.25" - 9.25"	.13" - .43"	locking
RAM-HOL-TAB21U	3.6" - 4.56"	7.42" - 10"	.13" - .72"	non-locking
RAM-HOL-TABL21U	3.6" - 4.56"	7" - 9.28"	.13" - .72"	locking
RAM-HOL-TAB22U	3" - 4.25"	7.38" - 9.99"	.13" - .4"	non-locking
RAM-HOL-TABL22U	3" - 4.25"	6.96" - 9.24"	.13" - .4"	locking
RAM-HOL-TAB23U	4.43" - 5.3"	8.32" - 10.92"	.13" - .62"	non-locking
RAM-HOL-TABL23U	4.43" - 5.3"	7.9" - 10.18"	.13" - .62"	locking
RAM-HOL-TAB24U	3.77" - 4.95"	8.08" - 10.69"	.13" - .36"	non-locking
RAM-HOL-TABL24U	3.77" - 4.95"	7.66" - 9.94"	.13" - .36"	locking
RAM-HOL-TAB27U	4.3" - 5.3"	7.88" - 10.38"	0" - .37"	non-locking
RAM-HOL-TABL27U	4.3" - 5.3"	7.5" - 9.63"	0" - .37"	locking
RAM-HOL-TAB29U	5" - 5.88"	8.25" - 11"	.3" - .67"	non-locking
RAM-HOL-TABL29U	5" - 5.88"	8.88" - 10.2"	.3" - .67"	locking
RAM-HOL-TAB30U	4.75" - 5.375"	7.82" - 10.375"	0" - .3125"	non-locking
RAM-HOL-TABL30U	4.75" - 5.375"	7.75" - 10.875"	0" - .3125"	locking



EZ-Roll'r™ for 7" - 8" Tablets

The EZ-Roll'r™ provides a low-profile and sturdy form-fit mounting solution for many consumer devices. The patented roller design of this cradle allows for smooth placement and removal of the device. This cradle is intended for devices that are not in a protective case.

Part Number	Fits
RAM-HOL-AP20U	iPad mini 4
RAM-HOL-AP14U	iPad mini 1, 2, and 3
RAM-HOL-SAM8U	Samsung Galaxy Tab 4 7.0
RAM-HOL-SAM6U	Samsung Galaxy Tab 7.0 Plus
RAM-HOL-SAM4U	Samsung Galaxy Tab 7.0



Tab-Tite™ and Tab-Lock™ for 9" - 10" Tablets

The Tab-Tite™ and Tab-Lock™ use spring-loaded interchangeable end cups to hold larger tablets in place. These cradles can accommodate most protective cases and ruggedized tablets.

The Tab-Lock™ features a keyed lock to secure your tablet and deter theft.

Part Number	Width Range	Height Range	Depth Range	Features
RAM-HOL-TAB-LGU	6.38" - 7.75" 6.38" - 8.25"	8.5" - 11.13" 9.5" - 11.75"	.13" - .56" .13" - 1.1"	set of 2 end cups non-locking
RAM-HOL-TABL-LGU	6.38" - 7.75" 6.38" - 8.25"	8.25" - 9.875" 9.25" - 11.25"	.13" - .56" .13" - 1.1"	set of 2 end cups locking
RAM-HOL-TAB3U	6.38" - 7.75"	8.5" - 11.13"	.13" - .56"	non-locking
RAM-HOL-TABL3U	6.38" - 7.75"	8.25" - 9.875"	.13" - .56"	locking
RAM-HOL-TAB6U	6.05" - 6.8"	8.625" - 11.25"	.13" - .5"	non-locking
RAM-HOL-TABL6U	6.05" - 6.8"	8.375" - 10.375"	.13" - .5"	locking
RAM-HOL-TAB8U	6.38" - 8.31"	9" - 11.5"	.13" - 1.12"	non-locking
RAM-HOL-TABL8U	6.38" - 8.31"	8.75" - 10.75"	.13" - 1.12"	locking
RAM-HOL-TAB9U	6.38" - 9.25"	10.625" - 12.625"	.13" - 2"	non-locking
RAM-HOL-TABL9U	6.38" - 9.25"	10.375" - 12.375"	.13" - 2"	locking
RAM-HOL-TAB10U	6.38" - 8.62"	9.75" - 12"	.13" - 1"	non-locking
RAM-HOL-TABL10U	6.38" - 8.62"	9.5" - 11.5"	.13" - 1"	locking
RAM-HOL-TAB17U	6.38" - 8.25"	9.5" - 11.75"	.13" - 1.1"	non-locking
RAM-HOL-TABL17U	6.38" - 8.25"	9.25" - 11.25"	.13" - 1.1"	locking
RAM-HOL-TAB19U	6.5" - 7.75"	10.75" - 13.375"	.13" - .93"	non-locking
RAM-HOL-TABL19U	6.5" - 7.75"	10.5" - 12.5"	.13" - .93"	locking
RAM-HOL-TAB20U	6.55" - 7.43"	9.5" - 12.125"	.3" - .875"	non-locking

RAM-HOL-TABL20U	6.55" - 7.43"	9.25" - 11.375"	.3" - .875"	locking
RAM-HOL-TAB25U	6.13" - 7.4"	9.64" - 12.32"	.13" - .7"	non-locking
RAM-HOL-TABL25U	6.13" - 7.4"	9.22" - 11.5"	.13" - .7"	locking
RAM-HOL-TAB26U	5.55" - 7"	9.38" - 12.11"	.13" - .34"	non-locking
RAM-HOL-TABL26U	5.55" - 7"	8.96" - 11.24"	.13" - .34"	locking
RAM-HOL-TAB28U	5.5" - 6.625"	9" - 11.75"	0" - .315"	non-locking
RAM-HOL-TABL28U	5.5" - 6.625"	8.66" - 11"	0" - .315"	locking
RAM-HOL-TAB31U	4.5" - 5.875"	9.375" - 11.875"	0" - .3125"	non-locking
RAM-HOL-TABL31U	4.5" - 5.875"	9.25" - 11.25"	0" - .3125"	locking
RAM-HOL-TABD14U for iPad 4	4.5" - 7.25"	8.5" - 11"	0" - .375"	non-locking retains factory charging cable
RAM-HOL-TABDL14U for iPad 4	4.5" - 7.25"	8.25" - 10.125"	0" - .375"	locking retains factory charging cable



EZ-Roll'r™ for 9" - 10" in Tablets

The EZ-Roll'r™ provides a low-profile and sturdy mounting solution for many consumer devices such as the iPad Air 2. The patented roller design of this cradle allows for smooth placement and removal of the device. This cradle is intended for devices that are not in a protective case.

Part Number	Fits
RAM-HOL-AP15U	iPad 2, 3 and 4
RAM-HOL-AP17U	iPad Air 1 and 2
RAM-HOL-AP8D3U	iPad 4 retains factory charging cable
RAM-HOL-AP8D3LU	iPad 4, locking retains factory charging cable

cradles



Tough-Tray™

The RAM® Mounts Tough-Tray™ is a spring-loaded, expandable tray designed to hold laptops and tablets. Adjustable retaining arms ensure the perfect fit without blocking ports. Integrated mounting points on the sides of the tray facilitates attaching additional items.

Part Number	Tray Width Range	Tray Depth	Side Arm Height
RAM-234-3	10" - 16"	10"	.5" - 1.75"
* RAM-234-3FL	10" - 16"	10"	.5" - 1.75"
RAM-234-6	8.56" - 11.12"	6"	2.75" max

*includes flat side arms



seen in this photo:
RAM-VB-193-SW1 (No-Drill™
vehicle-specific laptop mount)
RAM-234K1-4U (flat clamping arm
kit for Tough-Tray™ laptop mounts)



seen in this photo:

- RAM-D-247U-4P1 (square rail clamp with 1" post)
- RAM-D-261U (arm with socket)
- RAM-D-2461U (square base)
- RAM-234-PAN2P (Tough-Dock™ for Panasonic Toughbook OF-18 & 19)



Rugged Hand-Held Device Cradles

Easy to insert and remove from the spring-loaded cradle, your hand-held device can be kept safe, secure, and is ready in countless environments. The hand-held cradles integrate USB, power and serial ports to ensure the device remains as functional as it is protected. These holders are form fitting and compact, yet tough enough to keep your device safe.

Part Number	Compatible Devices	Power input	Ports
RAM-HOL-IN19PBU	Intermec CN50	12-28V DC bare wire	USB Type A, mUSB, DB9 Serial
RAM-HOL-IN19PCU	Intermec CN50	12-28V DC cigarette plug	USB Type A, mUSB, DB9 Serial
RAM-HOL-IN11PU	Intermec CN3 & CN4	12-28V DC cigarette plug and bare wire	USB Type A, DB9 Serial
RAM-HOL-SYM3PU	Motorola MC5574, MC5590, MC55A0, MC65 & MC67	12-28V DC cigarette plug and bare wire	USB Type A, DB9 Serial



Spring-Loaded Cradles

Customize your mobile work station with a spring-loaded cradle. These low-profile cradles secure a variety of dynamic printers and scanners to keep your mobile device working for you in the field. At each end of the spring-loaded cradle are small side clamps that are designed to fit cleanly around the device.

Part Number	Clamping Width	Height	Compatible Devices
RAM-VPR-102	8" - 14.5"	Max 1.75"	Canon BJC-85, Canon i80, Canon i90, Canon iP100
RAM-VPR-103	9" - 15.5"	Max 2.5"	HP DeskJet 450, HP DeskJet 460, HP DeskJet 470, HP OfficeJet 100
RAM-VPR-104	5.625" - 9.5"	Max 1.75"	Fujitsu FP-1000
RAM-VPR-105	6.625" - 10.5"	Max 2.5"	Printronix M4L
RAM-HOL-QD1U	2" - 10.75"	2.625"	Zebra MC9200, Zebra MC9190-Z



Form-Fit Printer Cradles

Create the optimum mobile office environment, regardless of vehicle or application with RAM® Mounts form-fit design for mobile printers. These mounts add little to the overall size of the printer. Multiple mounting options are available to accommodate a wide variety of configurations. RAM® enables mounting of the printer where it is best for you.

Part Number	Compatible Devices
RAM-VPR-101	Brother PocketJet 3, Brother PocketJet 3 Plus, Brother PocketJet 6, Brother PocketJet 6 Plus, Brother PocketJet 673, Brother PocketJet 7 series
RAM-VPR-106	Brother RuggedJet RJ-4030, Brother RuggedJet RJ-4040



Power-Grip™ Scanner Gun Cradle

Keep your scanner guns in an ergonomic and user-friendly location with this rugged holder. The open bottom design enables scanning while in the holder. Replaceable elastomeric fins grip the handle of the scanner for a secure hold.

Part Number	Internal Width	Internal Length	Internal Depth
RAP-396U	3.47"	2.16"	4.9"



Drop-N-Lock™ Scanner Gun Cradle

The Drop-N-Lock™ is designed to hold most types of Pistol Grip handles. The spring-loaded lever on the side of the cradle will securely hold the scanner in the cradle. Simply drop the scanner handle into the holder and it will lock into place.

Part Number	Internal Width	Internal Length	Internal Depth
RAP-317U	1.46"	2.5"	5.11"

post clamps

seen in this photo:

RAM-247U-4P1 (square rail clamp with .5" post)

RAM-261-2U (arm with two balls)

RAM-201U (standard length arm x2)

RAM-202U (round base x2)

RAM-GDS-DOCKL-V2-SAM19U (locking GDS® dock for Samsung Tab S2 9.7)

RAM-GDS-SKIN-SAM19U (IntelliSkin™ with GDS Technology™ for Samsung Tab S2 9.7)









RAP-300-1U (Magnetic Power Plate™ adapter)

RAM-KEY1-BT (Bluetooth keyboard)



Post Clamp Swing Arm Systems

These extensions and swing arms are customizable by pivoting or adjusting on a post and terminate in an attachment point for a RAM® ball to offer a flexible mounting solution. Ensure that the ergonomics of your mounting solution are comfortable and mount equipment in hard-to-reach spaces with the items below.

Part Number	Component	Specifications	
C-Size Components			
	RAM-247U-4P1	Base	square rail clamp with .5" NPT post for 4" wide bars
	RAM-261U	Arm	attaches to .5" NPT post includes socket for 1.5" (C) sized ball
	RAM-261-1U	Arm	6" extension arm attaches to .5" NPT post
	RAM-261-ADJU	Arm	adjustable arm attaches to .5" NPT post includes socket for 1.5" (C) sized ball
	RAM-261-2U	Arm	6" extension arm attaches to .5" NPT post includes two 1.5" (C) sized balls
D-Size Components			
	RAM-D-247U-4P1	Base	square rail clamp with 1" NPT post for 4" wide bars
	RAM-D-261U	Arm	attaches to 1" NPT post includes socket for 2.25" (D) sized ball
	RAM-D-261-1U	Arm	6" extension arm attaches to 1" NPT post

accessories



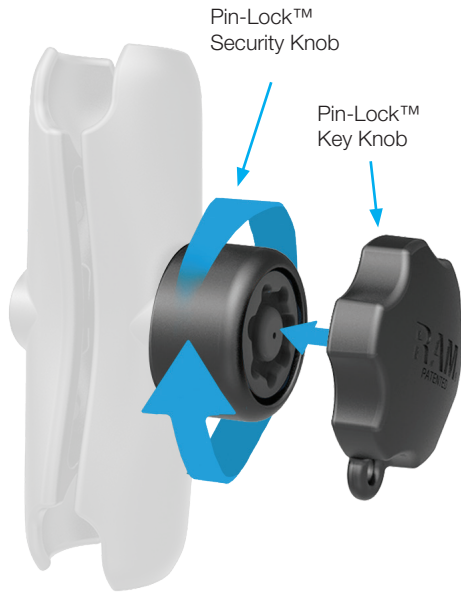
seen in this photo:

RAM-D-202U-CRO1 (adapter for the Crown Work Assist®)

RAM-D-201U-C (short arm)

RAM-D-202U-23 (rectangular base)

RAM-KNOB9HU (Hi-Torq™ wrench for D sized arms)



🔒 Pin-Lock™ Security Knob and Key

The Pin-Lock™ security knob adds tamper and theft deterrence to your B and C sized mount by replacing your standard knob. The low-profile knob is an ideal accessory to keep your mounted electronic device safe and locked into position.

Part	Fits
RAP-S-KNOB3U	any B sized arm
RAP-S-KNOB5U	any C sized arm



Keyed Locking Knob

The keyed security knob adds tamper and theft deterrence to your B and C sized mount by replacing your standard knob. The keyed knob is an ideal accessory to keep your mounted electronic device safe and locked into position.

Part	Fits
RAM-KNOB3LU	any B sized arm
RAM-KNOB5LU	any C sized arm



Hi-Torq™ Wrench

The RAM® Hi-Torq™ Wrench is used with the knob on D sized arms. This wrench provides the extra leverage needed to tighten the mount in cold weather or in small spaces. Tightening the knob with the wrench delivers security and vibration dampening.

Part	Fits
RAM-KNOB9HU	any D sized arm



Bluetooth Keyboard

The RAM® Bluetooth keyboard can be used with any tablet for efficient and comfortable data entry. Pair this Bluetooth keyboard with the RAM® Keyboard Accessory with Roto-View™ to create the ultimate solution for data entry on your forklift or in your vehicle.

Part	Dimensions
RAM-KEY1-BT	11.2"l x 4.72"w x .91"h



Keyboard Adapter with Roto-View™

This is a cost-effective way to mount your tablet and keyboard together. The Roto-View adapter plate allows for adjustment between portrait and landscape viewing of the device and attaches to any RAM Mounts tablet cradle. The kit adds a magnetic mounting plate allowing for easy placement and removal of your keyboard. The Roto-View can be used separately as well.

Part	Overall Length	Fits
RAP-TAB-KEY1-300U	13.75"	B or C sized bases with the AMPs or diamond hole pattern
RAM-HOL-ROTO1U <i>Roto-View™ plate only</i>	—	B or C sized bases with the AMPs or diamond hole pattern



Handi-Case™

The RAM® Handi-Case™ is capable of keeping all of your paperwork, packing slips and other items organized anywhere you need it. Beyond just a writing surface, you get document storage, tool holder, pen and pencil storage and the durability to withstand any working condition.

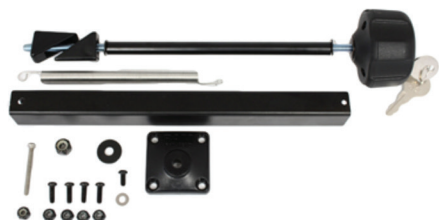
Part	Internal Dimensions
RAM-HC1U	12.125"l x 9.875"w x 1.375"d



LED Spotlight with 1" Ball

This LED spotlight yields a bright and efficient beam for safety and visibility while maintaining a low power draw. The weather-resistant body shields a 30-degree spotlight LED bulb from the elements. The long cord with standard 12v plug means you can mount this light almost anywhere.

Part	Ball Size	Bulb Specs	Power Cable	Hardwire Cable	Replacement Bulb
RAM-B-152B	1" (B)	30-degree spotlight 4500K color temp	10' long coiled with 12V DC cigarette plug	12" long with 2 ring terminals, female cigarette plug	RAM-B-152-BULB



Safe-N-Secure™ Locking Kit

The Safe-N-Secure™ locking kit is designed to secure and protect the Tough-Tray™. The kit includes a keyed locking knob to upgrade your RAM® Tough-Tray™ to a theft-deterrent solution.

Part	Fits
RAM-234-LK2U	RAM-234-3



Adjustable Laptop Screen Support Arm

The screen support arm with spring loaded keeper travels smoothly with your laptop screen through numerous viewing angles. The support arm keeps your screen steady and secure.

Part	Fits
RAM-234-S2U	RAM-234-3



Self-Leveling Cup Holder with Koozie

Ergonomics and operator comfort are crucial to productivity. The RAM® Mounts cup holder is a self-leveling cup holder that can mount anywhere a RAM® base can be attached. The integrated eyelet and hook provides an optional tethering function, securing any small or open container in harsh environments.

Part	Fits
RAM-B-132BU	cups, cans, bottles or mugs 2.5" - 3.5" diameter



RAM Level Cup™ XL with Koozie

Designed for bigger cups and water bottles, the Level Cup XL keeps your drink upright while moving loads. This kit includes a Level Cup XL with a B-size RAM Mounts ball directly attached. The opening securely grips larger cups and the adjustable bottom piece moves to accommodate taller cups and the rubber feet flex to hold the bottom.

Part	Compatible Container Dimensions
RAP-B-417BU	width range 2.6" - 3.5" height range 3.75" - 11"



Multi-Pad™ Organizer

Keep important documents securely in place and organized with this durable holder. Utilize the integrated magnets to hold the included ferrous metal pen in place. The Multi-Pad™ utilizes several mounting points so it can be easily attached to any RAM® mount with the universal AMPs hole pattern.

Part	Dimensions
RAM-HOL-MP1U	8"l x 4"w



seen in this photo:

RAM-247U-4 (square rail clamp)

RAM-201U (standard length arm)

RAM-238U (diamond base)

RAM-HOL-MP1U (Multi-Pad™ organizer)

IntelliSkin™ with GDS Tech™



seen in this photo:

RAM-335-246 (overhead guard plates)

RAM-201U (standard length arm)

RAM-202U (round base)

RAM-GDS-DOCKL-V2-AP8U (locking GDS® dock for Apple iPad Air 2)

RAM-GDS-SKIN-AP8 (IntelliSkin™ with GDS Technology™ for Apple iPad Air 2)

RAM-B-247U-25 (square rail clamp)

RAM-B-201U (standard length arm)

RAM-B-238U (diamond base)

RAM-GDS-DOCK-V1U (universal GDS® phone dock)

RAM-GDS-SKIN-AP10 (IntelliSkin™ with GDS Technology™ for Apple iPhone 6 Plus and 6s Plus)



IntelliSkin™ with GDS Tech™

**Always Protected.
Always Connected.™**



**IntelliSkin™
features**



Protect



Charge

Standardize



industry recognition



The Material Handling Institute named IntelliSkin™ and GDS Technology™ as the winner of its 2016 Innovation Awards in the IT Product category. The premier material handling trade organization acknowledged the benefit of IntelliSkin™ and GDS® to material handling companies.



The Consumer Technology Association has named IntelliSkin™ and GDS Technology™ as a CES 2016 Innovation Awards Honoree. The honor recognizes outstanding design and engineering in cutting edge consumer electronics products. Products chosen as CES Innovation Honorees reflect innovative design and engineering in some of the most cutting edge tech products and services.

Samsung



IntelliSkin™



skin may differ depending on device

Part Number	Device
RAM-GDS-SKIN-SAM7U	Galaxy S5
RAM-GDS-SKIN-SAM14U	Galaxy S6
RAM-GDS-SKIN-SAM15U	Galaxy Tab A 9.7
RAM-GDS-SKIN-SAM16U	Galaxy Tab A 8.0
RAM-GDS-SKIN-SAM18U	Galaxy Tab S2 8.0
RAM-GDS-SKIN-SAM19U	Galaxy Tab S2 9.7
RAM-GDS-SKIN-SAM20U	Galaxy Tab E 9.6
RAM-GDS-SKIN-SAM21	Galaxy Tab E 8.0
RAM-GDS-SKIN-SAM22	Galaxy S7
RAM-GDS-SKIN-SAM23	Galaxy Tab A 10.1
RAM-GDS-SKIN-SAM24	Galaxy Tab A 7.0
RAM-GDS-SKIN-SAM25	Galaxy J3



Vehicle Docks



dock may differ depending on device

Non-Locking

Part Number	Device
RAM-GDS-DOCK-V2-SAM15U	Galaxy Tab A 9.7
RAM-GDS-DOCK-V2-SAM16U	Galaxy Tab A 8.0
RAM-GDS-DOCK-V2-SAM18U	Galaxy Tab S2 8.0
RAM-GDS-DOCK-V2-SAM19U	Galaxy Tab S2 9.7
RAM-GDS-DOCK-V2-SAM20U	Galaxy Tab E 9.6
RAM-GDS-DOCK-V2-SAM21U	Galaxy Tab E 8.0
RAM-GDS-DOCK-V2-SAM23U	Galaxy Tab A 10.1
RAM-GDS-DOCK-V2-SAM24U	Galaxy Tab A 7.0
RAM-GDS-DOCK-V1U	Phones with IntelliSkin™

Locking

Part Number	Device
RAM-GDS-DOCKKL-V2-SAM15U	Galaxy Tab A 9.7
RAM-GDS-DOCKKL-V2-SAM16U	Galaxy Tab A 8.0
RAM-GDS-DOCKKL-V2-SAM18U	Galaxy Tab S2 8.0
RAM-GDS-DOCKKL-V2-SAM19U	Galaxy Tab S2 9.7
RAM-GDS-DOCKKL-V2-SAM20U	Galaxy Tab E 9.6
RAM-GDS-DOCKKL-V2-SAM21U	Galaxy Tab E 8.0
RAM-GDS-DOCKKL-V2-SAM23U	Galaxy Tab A 10.1
RAM-GDS-DOCKKL-V2-SAM24U	Galaxy Tab A 7.0



Apple



IntelliSkin™



skin may differ depending on device

Part Number	Device
RAM-GDS-SKIN-AP2	iPad mini 2 and 3
RAM-GDS-SKIN-AP7	iPad mini 4
RAM-GDS-SKIN-AP8	iPad Air 2
RAM-GDS-SKIN-AP9	iPhone 6 and iPhone 6s
RAM-GDS-SKIN-AP10	iPhone 6 Plus and iPhone 6s Plus
RAM-GDS-SKIN-AP12	iPad Pro 9.7
RAM-GDS-SKIN-AP14	iPhone SE



Vehicle Docks



dock may differ depending on device

Non-Locking	
Part Number	Device
RAM-GDS-DOCK-V2-AP2U	iPad mini 2 and 3
RAM-GDS-DOCK-V2-AP7U	iPad mini 4
RAM-GDS-DOCK-V2-AP8U	iPad Air 2, iPad Pro 9.7

Locking	
Part Number	Device
RAM-GDS-DOCKKL-V2-AP2U	iPad mini 2 and 3
RAM-GDS-DOCKKL-V2-AP7U	iPad mini 4
RAM-GDS-DOCKKL-V2-AP8U	iPad Air 2, iPad Pro 9.7

LG



IntelliSkin™



Part Number	Device
RAM-GDS-SKIN-LG2	G Pad F 8.0

Vehicle Docks



Non-Locking	
Part Number	Device
RAM-GDS-DOCK-V2-LG2	G Pad F 8.0

Locking	
Part Number	Device
RAM-GDS-DOCKKL-V2-LG2	G Pad F 8.0



IntelliSkin™ with GDS Tech™



GDS® Desktop Dock Pro for RAM® IntelliSkin™ Products

The Desktop Dock Pro charges IntelliSkin™ wrapped devices and supports mUSB 3.0 data transfer and power capabilities.

Part Number	RAM-GDS-DOCK-D1U
Input Connector Type	mUSB 3.0
Dimensions	4.625"w x 4.625"d x 3"h
Weight	2.3 lbs
Max Power	5V @ 2A*

*mUSB products supporting USB 2.0/3.0 will have a max current of 1.5A



GDS® Desktop Dock for RAM® IntelliSkin™ Products

Keep your IntelliSkin™ wrapped devices charged and data synced with these low-profile desktop docks. Small and durable, the Desktop Dock is great for compact work spaces.

Part Number	Input Connector Type	Dimensions	Weight	Number of Pins	Max Power
RAM-GDS-DOCK-D2U	mUSB 2.0	3"w x 3.625"d x 2"h	1.1 lbs	5	5V @ 2A*

*mUSB products supporting USB 2.0/3.0 will have a max current of 1.5A

seen in this photo:

RAM-GDS-DOCK-D2U (GDS® desktop dock)

RAM-GDS-SKIN-SAM22 (IntelliSkin™ with GDS Technology™ for Samsung S7)





GDS® 4 Gang Charge Only Desktop Dock for RAM® IntelliSkin™ Products

Charge up to four IntelliSkin™ wrapped devices through this multi-port dock with integrated power supply. This low-profile, charge-only solution plugs into any 110V wall plug and is compatible with 220V system with the use of an adapter.

Part Number	RAM-GDS-DOCK-4G1PU
Input Connector Type	110 wall plug
Input Range	100V-240V 50/60Hz
Dimensions	4.3"w x 7.8"d x 4"h
Weight	2.7 lbs
Max Power	5V @ 2A*

*mUSB products supporting USB 2.0/3.0 will have a max current of 1.5A



GDS® 6 Gang Charge Only Desktop Dock for RAM® IntelliSkin™ Products

Charge up to six IntelliSkin™ wrapped devices through this multi-port dock with integrated power supply. This low-profile, charge-only solution plugs into any 110V wall plug and is compatible with 220V system with the use of an adapter.

Part Number	RAM-GDS-DOCK-6G1PU
Input Connector Type	110 wall plug
Input Range	100V-240V 50/60Hz
Dimensions	4.3"w x 10.4"d x 4"h
Weight	3.3 lbs
Max Power	5V @ 2A*

*mUSB products supporting USB 2.0/3.0 will have a max current of 1.5A



GDS® Slide™ Dock for RAM® IntelliSkin™ Products

The Slide™ Dock charger creates a modular and interchangeable solution for charging carts and cabinets. The dock is adjustable to accommodate virtually any tablet.

Part Number	RAM-GDS-DOCK-G7MU	RAM-GDS-DOCK-G7U	RAM-GDS-DOCK-G7BU
Input Connector Type	female USB Type A	female USB Type A	female USB Type A
Attachment Type	magnetic base	drill-down base	GDS® receptacle only
Max Power	5V @ 2A*	5V @ 2A*	5V @ 2A*

*mUSB products supporting USB 2.0/3.0 will have a max current of 1.5A



IntelliSkin™ with GDS Tech™



seen in this photo:

RAM-GDS-DOCK-6G1PU (GDS® 6 gang desktop dock)

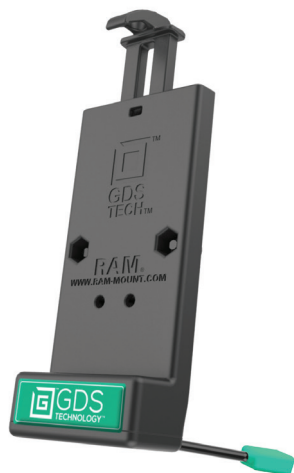
RAM-GDS-SKIN-SAM15U (IntelliSkin™ with GDS Technology™ for Samsung Tab A 9.7)

RAM-GDS-SKIN-AP2 (IntelliSkin™ with GDS Technology™ for Apple iPad mini 3)

RAM-GDS-SKIN-SAM12U (IntelliSkin™ with GDS Technology™ for Samsung Tab 4 8.0)

RAM-GDS-SKIN-SAM11U (IntelliSkin™ with GDS Technology™ for Samsung Tab 4 7.0)

RAM-GDS-SKIN-SAM14U (IntelliSkin™ with GDS Technology™ for Samsung S6)



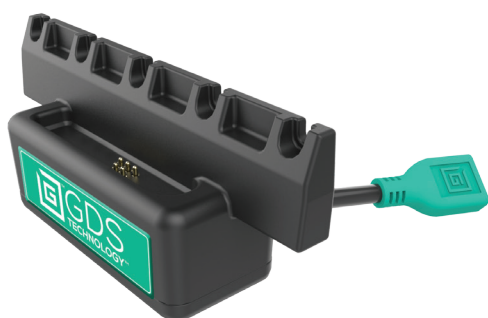
GDS® Universal Vehicle Phone Dock for RAM® IntelliSkin™ Products

The universal phone vehicle dock with GDS Technology™ is a spring loaded, quick release cradle that offers a secure fit with easy access to the mounted phone. This docking station is compatible with any IntelliSkin™ wrapped phone.

Part Number	RAM-GDS-DOCK-V1U
Input Connector Type	mUSB 2.0
Hole Pattern	2 holes, 1.912" center to center matches cross section of the AMPs hole pattern
Fits	any phone in an IntelliSkin™
Max Power	5V @ 2A*

*mUSB products supporting USB 2.0/3.0 will have a max current of 1.5A

Bottom Cup for Tab-Tite™ and Tab-Lock™ GDS® Vehicle Docks



Convert your existing Tab-Tite™ or Tab-Lock™ tablet mount to a GDS® system by changing the bottom cup. This module is compatible with any device wrapped with IntelliSkin™ and offers charging and data sync while in a mobile setting.

Part Number	Input Connector Type	Number of Pins	Max Power
RAM-GDS-DOCK-V3BU	mUSB 2.0	5	5V @ 2A*

*mUSB products supporting USB 2.0/3.0 will have a max current of 1.5A



GDS® Adjustable Desktop Dock for RAM® IntelliSkin™ Products

This desktop dock will hold any sized IntelliSkin™ wrapped device thanks to its adjustable back support. It is ideal for extra thick devices or those with external accessories attached.

Part Number	RAM-GDS-DOCK-D1AU
Input Connector Type	mUSB 3.0
Dimensions	5.75"w x 4.6875"d x 6"h
Weight	1.7 lbs
Max Power	5V @ 2A*

*mUSB products supporting USB 2.0/3.0 will have a max current of 1.5A



IntelliSkin™ with GDS Tech™



Snap-Con™ GDS® to mUSB 2.0 Adapter

Use a mUSB 2.0 cable to quickly charge and sync any device in an IntelliSkin™ when a GDS® dock is unavailable.

Part Number	RAM-GDS-AD1U
Input Connector Type	mUSB 2.0
Fits	any IntelliSkin™ wrapped device
Max Power	5V @ 2A*

*mUSB products supporting USB 2.0/3.0 will have a max current of 1.5A



GDS® Intelligent 6-Port USB Charger

This USB charger works with the GDS® 6 gang desktop dock to simultaneously charge six IntelliSkin™ wrapped devices. Up to six USB cables connect to the charger, which utilizes one power cord to simplify the charging of multiple devices.

Part Number	RAM-GDS-CHARGE-USB6
Input Connector Type	110 wall plug
Input Range	100V-240V 50/60Hz
Max Power	5V @ 2.4A* per port

*mUSB products supporting USB 2.0/3.0 will have a max current of 1.5A



GDS® 2-Port USB Cigarette Charger

The GDS® 2-Port USB cigarette charger will charge two devices at once. The low-profile design fits easily in your dash without getting in the way of other controls within the vehicle.

Part Number	RAM-GDS-CHARGE-USB2HCIG
Output Connector Type	2 female USB type A
Input Range	12-24 VDC
Max Power	5V @ 2.4A* per port

*mUSB products supporting USB 2.0/3.0 will have a max current of 1.5A



GDS® 2-Port USB Wall Charger

The GDS® 2-port wall charger will charge two devices at once. This low-profile plug has a dual 2.4A output (4.8A total) to assure your devices will charge quickly and efficiently.

Part Number	RAM-GDS-CHARGE-USB2W
Output Connector Type	2 female USB type A
Input Range	100V-240V 50/60Hz
Max Power	5V @ 2.4A* per port

*mUSB products supporting USB 2.0/3.0 will have a max current of 1.5A



Stand Off Risers for GDS® Vehicle Docks

These stand off risers provide extra space for IntelliSkin™ wrapped tablets with accessories such as the HandStand™ Hand Strap and Kick Stand. The included hardware allows for easy attachment to GDS® vehicle docks.

Part Number	RAM-HOL-TAB-RISER2U
Fits	any GDS® vehicle dock



HandStand™ - Hand Strap and Kick Stand for RAM® IntelliSkin™ Products

The HandStand™ provides an adjustable hand strap that is compatible with a gloved hand and can be rotated 360 degrees. An integrated kick stand allows for positioning the tablet on a flat surface for on the go operation.

Part Number	RAM-GDS-HS1U
Fits	any HandStand™ compatible IntelliSkin™

*when using an IntelliSkin™ with a HandStand™ in a GDS® vehicle dock, the RAM-HOL-TAB-RISER2U is needed



Shoulder Strap for RAM® IntelliSkin™ Products

Secure devices while remotely processing orders or working on the move. The shoulder strap is a durable and ergonomic choice.

Part Number	RAM-GDS-SS1U
Fits	any shoulder strap compatible IntelliSkin™



IntelliSkin™ with GDS Tech™



GDS® Step Down Converter Charger

This is the ideal solution for providing power to any 5V device on your forklift. This charger features a variety of power options such as male micro-B USB and female USB type A connectors that can connect to your GDS® dock.

*mUSB products supporting USB 2.0/3.0 will have a max current of 1.5A

Part Number	Output Connector Type	Input Range	Max Power	Input Cable Length	Output Cable Length
RAM-GDS-CHARGE-V1U	male micro-B USB	10-50 VDC	5V @ 1.5A*	1.2 Meters	1.2 Meters
RAM-GDS-CHARGE-V2U	female USB type A	10-50 VDC	5V @ 1.5A*	1.2 Meters	1.2 Meters
RAM-GDS-CHARGE-V4U	male micro-B USB	11.5-36 VDC	5V @ 2.5A*	1.2 Meters	1.2 Meters

GDS® Cables



Deliver power and data wherever it is needed with GDS® cables. These reliable and efficient cables offer the flexibility to place docks where they are most effective and connect to your power supply through a USB Type A plug.

Part Number	Connector Type
RAM-GDS-CAB-MUSB2-1	mUSB 2.0
RAM-GDS-CAB-MUSB290-1	90-degree mUSB 2.0
RAM-GDS-CAB-MUSB3-1	mUSB 3.0

10' Power Cord with Female Cigarette Plug



The 10' long, non-coiled cable with two ring terminals is designed to route to either the vehicle battery or a fuse panel for a permanent hard-wire power installation.

Part Number	RAM-CIG-F-10
Input Connector	two .31 ID ring terminals
Output Connector	female cigarette plug
Cable Length	10'

partners & popular applications



RAM® Mounts enable the use of tablets, rugged devices and printers on Crown forklifts by attaching to the Crown Work Assist® platform. This adapter is offered with three different ball sizes to support devices of different weights.

Part Number	Ball Size	Includes
RAM-B-202U-CRO2	1" (B)	ball base for Work Assist®
* RAM-202U-CRO1	1.5" (C)	ball base for Work Assist®
* RAM-D-202U-CRO1	2.25" (D)	ball base for Work Assist®
* RAM-101U-B-CRO1	1.5" (C)	ball base for Work Assist®, short arm, round ball base with AMPs pattern
* RAM-101U-CRO1	1.5" (C)	ball base for Work Assist®, standard arm, round ball base with AMPs pattern
* RAM-101U-D-CRO1	1.5" (C)	ball base for Work Assist®, long arm, round ball base with AMPs pattern

*steel reinforced post



seen in this photo:

RAM-202U-CRO1 (adapter for the Crown Work Assist®)

RAM-201U (standard length arm)

RAM-202U (round base)

RAM-GDS-DOCKL-V2-AP7U (locking GDS® dock for Apple iPad mini 4)

RAM-HOL-RISER2U (stand off risers for GDS® docks)

RAM-GDS-HS1U (Handstand™ hand strap and kick stand attachment)

RAM-GDS-SKIN-AP7 (IntelliSkin™ with GDS Technology™ for Apple iPad mini 4)

RAYMOND

Integrating telematics and automation into a warehouse environment can be a challenge. The OEM integration between RAM® Mounts and Raymond provides modularity and easy attachment for the iWAREHOUSE telematics system as well as fans and lights.

seen in this photo:

RAM-B-202U (round base x2)

RAM-B-201U-A (short arm x2)

RAM-B-238U (diamond base x2)

RAM-202U-152 (square base x2)

RAM-201U-B (short arm)



partners & popular applications

Honeywell

RAM® Mounts supports almost every Honeywell material handling product with a modular line of mounting systems. RAM® provides the flexibility to attach the right device for the job to your forklift, pallet jack and more. See compatibility chart for a full list of supported products.

seen in this photo:

RAM-335-D-246 (overhead guard plates with square ball base)

RAM-D-201U-C (short arm)

RAM-D-254U (round base)

custom Honeywell bracket

RAM-201U (standard length arm)

custom Honeywell keyboard bracket made by RAM®

RAM-202U (round base)

RAP-396U (Power-Grip™ scanner gun cradle)





RAM® Mounts supports almost every Zebra material handling product. RAM® provides quick access and modular mounting to create efficiencies and ease of use. See compatibility chart for a full list of supported products.



seen in this photo:

RAM-D-247U-5 (square rail clamp)

RAM-D-201U (standard length arm)

RAM-D-2461U (square base)

RAM-247U-5 (square rail clamp)

RAM-201U (standard length arm)

RAM-202U (round base)

partners & popular applications



RAM® Mounts and I.D. Systems® have developed the RAM-101U-B-IDS4 to provide the perfect mount for the VAC 4 system. The stainless steel hardware and rugged construction of this product provides a durable mount in any environment.

seen in this photo:

RAM-101U-B-IDS4 (bracket with short arm for the ID Systems® VAC4)

RAM-247B-HAR-IDS1U (backing plate and hardware for ID Systems® VAC mount)





An OEM integration with Newcastle Systems integrates displays and laptops directly onto carts creating mobile powered work stations. RAM® Mounts provide a rugged hold and enable nearly infinite adjustment.

seen in this photo:

RAM-2314-3 (Tough-Tray™ laptop cradle)


RAM-101U (double ball and socket mount)





compatibility chart




Competence in Mobile Computing


		
MTC 6/10		
Cradle	Ball Base	Notes
N / A	RAM-D-2461U	Attaches to OEM device using VESA 75mm hole pattern


		
MTC 6/12		
Cradle	Ball Base	Notes
N / A	RAM-D-2461U	Attaches to OEM device using VESA 75mm hole pattern

		
MTC 6/15		
Cradle	Ball Base	Notes
N / A	RAM-D-2461U	Attaches to OEM device using VESA 75mm hole pattern


compatibility chart


 <div>DLT-V8310</div>		
Cradle	Ball Base	Notes
N / A	RAM-D-2461U	Attaches to OEM device using VESA 75mm hole pattern
N / A	x2 RAM-202U	Attaches to OEM device using AMPS hole pattern


 <div>DLT-V8312</div>		
Cradle	Ball Base	Notes
N / A	RAM-D-2461U	Attaches to OEM device using VESA 75mm hole pattern
N / A	x2 RAM-202U	Attaches to OEM device using AMPS hole pattern

 <div>XMT 5/7</div>		
Cradle	Ball Base	Notes
N / A	RAM-D-2461U	Attaches to OEM device using VESA 75mm hole pattern


compatibility chart

		
XMT 5/10		
Cradle	Ball Base	Notes
N / A	RAM-D-2461U	Attaches to OEM device using VESA 75mm hole pattern

		
PWS-870		
Cradle	Ball Base	Notes
PWS-870 Vehicle Docking Station	RAM-D-2461U	Attaches to OEM device using VESA 75mm hole pattern

		
TREK 773		
Cradle	Ball Base	Notes
N / A	RAM-2461U	Attaches to OEM device using VESA 75mm hole pattern

compatibility chart

 <div>TREK 723</div>		
Cradle	Ball Base	Notes
N / A	RAM-202U	Attaches to OEM device using AMPS hole pattern



compatibility chart



Guardian

Cradle	Ball Base	Notes
N / A	RAM-202U	Attaches to OEM device using AMPS hole pattern



Phoenix

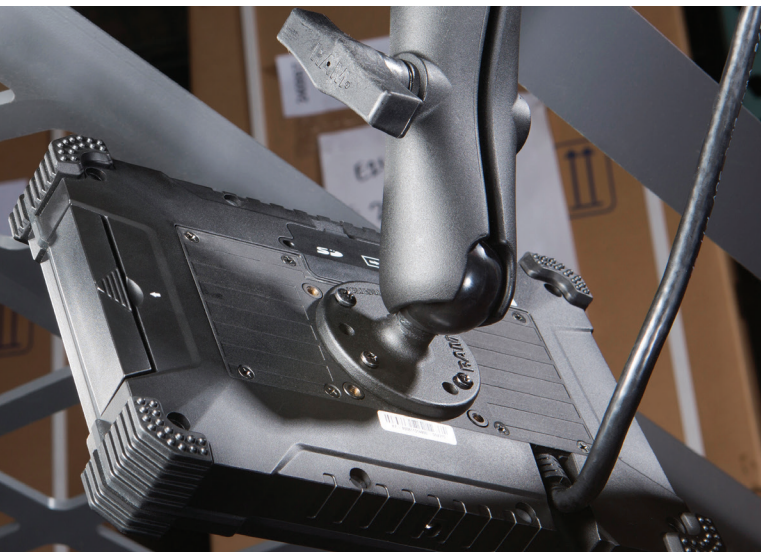
Cradle	Ball Base	Notes
N / A	RAM-202U	Attaches to OEM device using AMPS hole pattern

seen in this photo:

RAM-247U-25 (square rail clamp)

RAM-201U (standard length arm)

RAM-202U (round base)



compatibility chart



Kodiak

Cradle	Ball Base	Notes
N / A	RAM-D-246U	Attaches to OEM device using VESA 100mm hole pattern



Everest S9000

Cradle	Ball Base	Notes
N / A	RAM-D-246U	Attaches to OEM device using VESA 100mm hole pattern

seen in this photo:

RAM-335-D-246 (overhead guard plates with square ball base)

RAM-D-201U (standard arm)

RAM-D-246U (square base)



compatibility chart



seen in this photo:

RAM-D-202U-CRO1 (adapter for the Crown Work Assist®)

RAM-D-201U-C (short arm)

RAM-D-254U (round base)

custom Honeywell bracket

RAM-202U (round base x2)

RAM-201U (standard length arm)

compatibility chart

Honeywell



Thor VM1

Cradle	Ball Base	Notes
N / A	RAM-D-254U	Attaches to OEM device using AMPS hole pattern



Thor VM2

Cradle	Ball Base	Notes
N / A	RAM-D-254U	Attaches to OEM device using AMPS hole pattern



Thor VM3

Cradle	Ball Base	Notes
N / A	RAM-D-254U	Attaches to OEM device using AMPS hole pattern



Thor VX9

Cradle	Ball Base	Notes
N / A	RAM-D-202U	Attaches to OEM device using 120 degree hole pattern

compatibility chart



Thor CV31

Cradle	Ball Base	Notes
N / A	RAM-D-202U	Attaches to OEM device using 120 degree hole pattern; compatible with RAM-202U-IN10 keyboard bracket



CV41

Cradle	Ball Base	Notes
N / A	RAM-D-254U	Attaches to OEM device using AMPS hole pattern



CV61

Cradle	Ball Base	Notes
OEM Adapter Plate (203-959-003)	RAM-D-202U	Attaches to OEM adapter plate using 120 degree hole pattern



Dolphin 99GX

Cradle	Ball Base	Notes
RAP-317U	RAM-202U	Dolphin 99GX must have OEM Pistol Grip; Attaches to RAM® cradle using AMPS hole pattern
OEM Cradle (99EX-MB-12)	RAM-202U	Attaches to OEM cradle using AMPS hole pattern

compatibility chart



Dolphin 70e

Cradle	Ball Base	Notes
RAM-HOL-UN7BU	N/A	



Intermec CK3X/CK3R

Cradle	Ball Base	Notes
RAP-317U	RAM-202U	CK3x/CK3R must have OEM Pistol Grip; Attaches to RAM® cradle using AMPS hole pattern
OEM Dock (871-231-102)	RAM-202U	Attaches to OEM cradle using AMPS hole pattern
OEM Holder (871-236-001)	RAM-202U	Attaches to OEM cradle using AMPS hole pattern



Intermec CN50/CN51

Cradle	Ball Base	Notes
RAM-HOL-IN19PBU	RAM-202U	Attaches to powered cradle using AMPS hole pattern; internal power with bare wire
RAM-HOL-IN19PCU	RAM-202U	Attaches to powered cradle using AMPS hole pattern; internal power with cigarette plug
RAM-HOL-IN19U	RAM-202U	Attaches to passive cradle using AMPS hole pattern

compatibility chart



Intermec CK70/CK71

Cradle	Ball Base	Notes
RAP-317U	RAM-202U	CK70/CK71 must have OEM Pistol Grip; Attaches to RAM® cradle using AMPS hole pattern
OEM Dock (871-034-001)	RAM-202U	Attaches to OEM cradle using AMPS hole pattern
OEM Holder (805-672-001)	RAM-202U	Attaches to OEM cradle using AMPS hole pattern



Intermec CN70/CN70e

Cradle	Ball Base	Notes
RAP-317U	RAM-202U	CN70/CN70e must have OEM Pistol Grip; Attaches to RAM® cradle using AMPS hole pattern
OEM Dock (871-034-001)	RAM-202U	Attaches to OEM cradle using AMPS hole pattern
OEM Holder (805-672-001)	RAM-202U	Attaches to OEM cradle using AMPS hole pattern



Intermec CN3/CN4

Cradle	Ball Base	Notes
RAM-HOL-IN11U	RAM-202U	Attaches to passive cradle using AMPS hole pattern
RAM-HOL-IN11PEBU	RAM-202U	Attaches to powered cradle using AMPS hole pattern; external power with bare wire
RAM-HOL-IN11PU	RAM-202U	Attaches to powered cradle using AMPS hole pattern; internal power with bare wire and cigarette plug
RAM-HOL-IN11PECU	RAM-202U	Attaches to powered cradle using AMPS hole pattern; external power with cigarette plug

compatibility chart



Dolphin CT50

Cradle	Ball Base	Notes
RAM-HOL-UN10BU	N/A	
OEM CRADLE (CT50-MB-0)	RAM-202U	Attaches to OEM cradle using AMPS hole pattern
OEM CRADLE W/ POWER ADAPTER (CT50-MB-1)	RAM-202U	Attaches to OEM cradle using AMPS hole pattern



Intermec CK3

Cradle	Ball Base	Notes
RAM-HOL-SUR1U	RAM-202U	Attaches to passive cradle using AMPS hole pattern



Granit 1911 Series

Cradle	Ball Base	Notes
RAP-396U	RAM-202U	Attaches to RAM® cradle using AMPS hole pattern



Vocollect A700 Series

Cradle	Ball Base	Notes
Vehicle Mount Talkman (VMT)	RAM-B-202U	Attaches to OEM cradle using AMPS hole pattern

compatibility chart



Verso+ 10

Cradle	Ball Base	Notes
N / A	RAM-D-2461U	Attaches to OEM device using VESA 75mm hole pattern



Verso 12


Cradle	Ball Base	Notes
N / A	RAM-D-2461U	Attaches to OEM device using VESA 75mm hole pattern




Verso 15

Cradle	Ball Base	Notes
N / A	RAM-D-2461U	Attaches to OEM device using VESA 75mm hole pattern

compatibility chart

		
JLT1214P and JLT1214N		
Cradle	Ball Base	Notes
N / A	RAM-D-2461U	Attaches to OEM device using VESA 75mm hole pattern

		
MT1010		
Cradle	Ball Base	Notes
JLT Vehicle Cradle	RAM-D-246U	Attaches to OEM cradle using VESA 100mm hole pattern



seen in this photo:

RAM-D-202U-CRO1 (adapter for the Crown Work Assist®)

RAM-D-201U-C (short arm)

RAM-D-2461U (square base)

compatibility chart



xTablet T7200

Cradle	Ball Base	Notes
OEM Cradle	RAM-202U	Attaches to OEM cradle using AMPS hole pattern



xTablet T1200

Cradle	Ball Base	Notes
xTablet T1200 Vehicle Dock	RAM-D-202U	Attaches to OEM powered cradle using AMPS hole pattern
xTablet T1200 Vehicle Holder	RAM-D-202U	Attaches to OEM passive cradle using AMPS hole pattern



xTablet T1400

Cradle	Ball Base	Notes
xTablet T1400 Cradle	RAM-2461U	Attaches to OEM cradle using VESA 75mm hole pattern

compatibility chart



xTablet T1600

Cradle	Ball Base	Notes
xTablet T1600 Vehicle Cradle	RAM-2461U	Attaches to OEM cradle using VESA 75mm hole pattern



xTablet Flex 8

Cradle	Ball Base	Notes
Snap Mount	RAM-202U	Attaches to OEM cradle using AMPS hole pattern

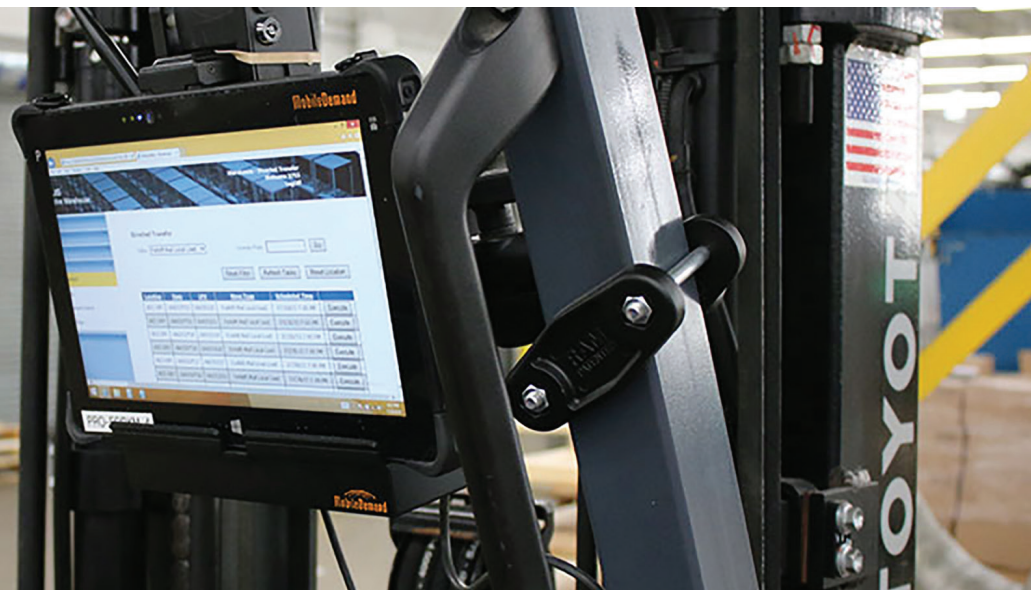


xTablet Flex 10

Cradle	Ball Base	Notes
Snap Mount	RAM-202U	Attaches to OEM cradle using AMPS hole pattern


seen in this photo:


- RAM-247U-4 (square rail clamp)
- RAM-201U (standard length arm)
- RAM-2461U (square base)



compatibility chart



 <div>C12 Industrial PC</div>		
Cradle	Ball Base	Notes
N / A	RAM-D-2461U	Attaches to OEM device using VESA 75mm hole pattern

 <div>C15 Industrial PC</div>		
Cradle	Ball Base	Notes
N / A	RAM-D-2461U	Attaches to OEM device using VESA 75mm hole pattern



seen in this photo:
RAM-D-111U (rectangular base)
RAM-D-201U (standard length arm)
RAM-D-2461U (square base)

compatibility chart

Panasonic



Toughbook CF-19

Cradle	Ball Base	Notes
RAM-234-PAN2	RAM-D-2461U	Attaches to RAM® cradle using VESA 75mm hole pattern
RAM-234-PAN2P	RAM-D-2461U	Attaches to RAM® cradle using VESA 75mm hole pattern



Toughbook CF-H2

Cradle	Ball Base	Notes
RAM-HOL-PAN5U	RAM-2461U	Attaches to RAM® cradle using VESA 75mm hole pattern
RAM-HOL-PAN5PU	RAM-2461U	Attaches to RAM® cradle using VESA 75mm hole pattern



Toughbook FZ-G1

Cradle	Ball Base	Notes
RAM-HOL-TAB19U	RAM-202U	Attaches to RAM® Tab-Tite™ cradle using AMPS hole pattern

compatibility chart



Toughbook FZ-Q1

Cradle	Ball Base	Notes
RAM-234-3	RAM-202U	Attaches to RAM® cradle using AMPS hole pattern



Toughbook FZ-M1

Cradle	Ball Base	Notes
RAM-HOL-TAB12U	RAM-202U	Attaches to RAM® Tab-Tite™ cradle using AMPS hole pattern
RAM-HOL-TABL12U	RAM-202U	Attaches to RAM® Tab-Lock™ cradle using AMPS hole pattern



Toughbook FZ-R1

Cradle	Ball Base	Notes
RAM-234-3	RAM-202U	Attaches to RAM® cradle using AMPS hole pattern

compatibility chart



Toughbook FZ-B2

Cradle	Ball Base	Notes
RAM-HOL-TAB12U	RAM-202U	Attaches to RAM® Tab-Tite™ cradle using AMPS hole pattern
RAM-HOL-TABL12U	RAM-202U	Attaches to RAM® Tab-Lock™ cradle using AMPS hole pattern
RAM-HOL-TAB19U	RAM-202U	Attaches to RAM® Tab-Tite™ cradle using AMPS hole pattern
RAM-HOL-TABL19U	RAM-202U	Attaches to RAM® Tab-Lock™ cradle using AMPS hole pattern



Toughbook FZ-A1

Cradle	Ball Base	Notes
RAM-HOL-TAB10U	RAM-202U	Attaches to RAM® Tab-Tite™ cradle using AMPS hole pattern
RAM-HOL-TABL10U	RAM-202U	Attaches to RAM® Tab-Lock™ cradle using AMPS hole pattern

seen in this photo:

RAM-D-202U-CRO1 (adapter for the Crown Work Assist®)


RAM-D-201U (standard length arm)


RAM-D-2461U (square base)


RAM-234-PAN2P (Tough-Dock™ for Panasonic Toughbook CF-18 & 19)


compatibility chart



		
FM10		
Cradle	Ball Base	Notes
N / A	RAM-D-2461U	Attaches to OEM device using VESA 100mm hole pattern


		
M9020		
Cradle	Ball Base	Notes
OEM Cradle	RAM-202U	Attaches to OEM cradle using AMPS hole pattern


		
M700		
Cradle	Ball Base	Notes
OEM Cradle	RAM-2461U	Attaches to OEM cradle using VESA 75mm hole pattern


		
M970D		
Cradle	Ball Base	Notes
OEM Cradle	RAM-2461U	Attaches to OEM cradle using VESA 75mm hole pattern

compatibility chart





 Motion F5m		
Cradle	Ball Base	Notes
RAM-HOL-MOT9U	RAM-2461U	Passive cradle with VESA 75mm hole pattern
RAM-HOL-MOT9PU	RAM-2461U	Powered cradle with VESA 75mm hole pattern
RAM-HOL-MOT9PU-USB	RAM-2461U	Powered cradle w/ external USB with VESA 75mm hole pattern

 Motion CL920		
Cradle	Ball Base	Notes
CL-Series Locking Mobile Dock by RAM®	RAM-202U or RAM-2461U	Attaches to OEM cradle using AMPS hole pattern or VESA 75mm hole pattern
OEM Mounting Plate	RAM-2461U	Attaches to OEM Mounting Plate using VESA 75mm hole pattern

 Motion R12		
Cradle	Ball Base	Notes
OEM Cradle	RAM-2461U	Attaches to OEM cradle using VESA 75mm hole pattern

compatibility chart

<div></div> <div>XC6 Series</div>		
Cradle	Ball Base	Notes
XDock Pro by RAM®	RAM-2461U	Attaches to OEM cradle using VESA 75mm hole pattern
XDIM Pro by RAM®	RAM-2461U	Attaches to OEM cradle using VESA 75mm hole pattern


<div></div> <div>Bobcat</div>		
Cradle	Ball Base	Notes
OEM Cradle (Xdock G2)	RAM-2461U	Attaches to OEM cradle using VESA 75mm hole pattern





seen in this photo:
RAM-335-D-246 (overhead guard plates with square ball base)
RAM-D-201U (standard length arm)
RAM-D-2461U (square plate)
XDock Pro by RAM®

compatibility chart



 VC80		
Cradle	Ball Base	Notes
N / A	RAM-D-202U-23	Attaches to OEM device

 VC70N0		
Cradle	Ball Base	Notes
N / A	RAM-D-2461U-MOTO7B	Attaches to OEM device using VESA 75mm hole pattern, includes hardware to attach
N / A	RAM-D-2461U-MOTO7	Bridge plate attaches to device and allows power supply to be mounted directly to rear of the VC70 computer, includes hardware to attach and RAM-D-2461U ball mount. Order exclusively through Zebra Technologies

 8585 Vehicle Mounted Computer		
Cradle	Ball Base	Notes
N / A	RAM-D-2461U	Attaches to OEM device using VESA 100mm hole pattern

compatibility chart



VH10

Cradle	Ball Base	Notes
N / A	RAM-D-202U-23	Attaches to OEM device



TC8000

Cradle	Ball Base	Notes
OEM Cradle	RAM-B-202U	Attaches to OEM cradle using AMPS hole pattern



TC70

Cradle	Ball Base	Notes
RAM-HOL-UN4U	RAM-B-238U	
OEM Cradle (CRD-TC7X-CVCD1-01)	RAM-B-238U	Attaches to OEM cradle using the diagonal of the AMPS hole pattern

compatibility chart

seen in this photo:


RAP-B-400U (small Tough-Claw™)


RAM-B-201U (standard length arm)


RAM-B-202U (round base)




compatibility chart

		
TC75		
Cradle	Ball Base	Notes
RAM-HOL-UN4U	RAM-B-238U	
OEM Cradle (CRD-TC7X-CVCD1-01)	RAM-B-238U	Attaches to OEM cradle using the diagonal of the AMPS hole pattern

		
TC55		
Cradle	Ball Base	Notes
RAM-HOL-UN10BU	N / A	
OEM Cradle (CRD-TC55-VCD1-01)	RAM-B-202U-MOTO2	Threads onto OEM cradle using AMPS hole pattern

		
MC40		
Cradle	Ball Base	Notes
RAM-HOL-UN10BU	N / A	

		
MC45		
Cradle	Ball Base	Notes
RAM-HOL-UN7BU	N / A	
OEM Cradle (VCD45XX-1000R)	RAM-B-202U-MOTO2	Threads onto OEM cradle using AMPS hole pattern

compatibility chart



MC55

Cradle	Ball Base	Notes
RAM-HOL-UN10BU	N / A	
RAM-HOL-SYM3U	RAM-202U	Attaches to RAM® passive cradle using AMPS hole pattern
RAM-HOL-SYM3PU	RAM-202U	Attaches to RAM® powered cradle using AMPS hole pattern; internal power with bare wire and cigarette plug
RAM-HOL-SYM3PECU	RAM-202U	Attaches to RAM® powered cradle using AMPS hole pattern; external power with cigarette plug
RAM-HOL-SYM3PEC-1U	RAM-202U	Attaches to RAM® powered cradle using AMPS hole pattern; external power with cigarette plug to DB9 connector
RAM-HOL-SYM3PE-RAY1U	RAM-202U	Attaches to RAM® powered cradle using AMPS hole pattern; external power with bare wire



MC67

Cradle	Ball Base	Notes
RAM-HOL-UN10BU	N / A	
RAM-HOL-SYM3U	RAM-202U	Attaches to RAM® passive cradle using AMPS hole pattern
RAM-HOL-SYM3PU	RAM-202U	Attaches to RAM® powered cradle using AMPS hole pattern; internal power with bare wire and cigarette plug
RAM-HOL-SYM3PECU	RAM-202U	Attaches to RAM® powered cradle using AMPS hole pattern; external power with cigarette plug
RAM-HOL-SYM3PEC-1U	RAM-202U	Attaches to RAM® powered cradle using AMPS hole pattern; external power with cigarette plug to DB9 connector
RAM-HOL-SYM3PE-RAY1U	RAM-202U	Attaches to RAM® powered cradle using AMPS hole pattern; external power with bare wire

compatibility chart



MC9200

Cradle	Ball Base	Notes
RAM-HOL-QD1U	RAM-202U	Attaches to RAM® cradle using AMPS hole pattern
3rd Party Cradle	RAM-202U	Attaches to any 3rd party cradle that has the AMPS hole pattern



MC9190-Z

Cradle	Ball Base	Notes
RAM-HOL-QD1U	RAM-202U	Attaches to RAM® cradle using AMPS hole pattern
3rd Party Cradle	RAM-202U	Attaches to any 3rd party cradle that has the AMPS hole pattern



MT2000

Cradle	Ball Base	Notes
RAP-396U	RAM-202U	Attaches to RAM® cradle using AMPS hole pattern



OMNII XT15

Cradle	Ball Base	Notes
OEM Cradle (ST1000)	RAM-202U	Attaches to OEM passive cradle using AMPS hole pattern
OEM Cradle (ST1002)	RAM-202U	Attaches to OEM powered cradle using AMPS hole pattern

compatibility chart



Workabout Pro 4

Cradle	Ball Base	Notes
OEM Cradle (WA1210-G2)	RAM-202U	Attaches to OEM cradle using AMPS hole pattern; use with long configurations
OEM Cradle (WA1310-G2)	RAM-202U	Attaches to OEM cradle using AMPS hole pattern; use with short configurations



DS3608 Series

Cradle	Ball Base	Notes
RAP-396U	RAM-202U	Attaches to RAM® cradle using AMPS hole pattern



LI3608/3678


Cradle	Ball Base	Notes
RAP-396U	RAM-202U	Attaches to RAM® cradle using AMPS hole pattern




LS3408 Series

Cradle	Ball Base	Notes
RAP-396U	RAM-202U	Attaches to RAM® cradle using AMPS hole pattern

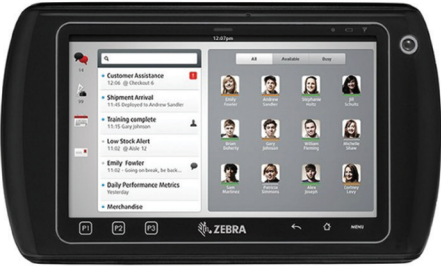
compatibility chart


		
DS3500 Series		
Cradle	Ball Base	Notes
RAP-396U	RAM-202U	Attaches to RAM® cradle using AMPS hole pattern

		
ET50/55 10.1"		
Cradle	Ball Base	Notes
RAM-HOL-TAB25U	RAM-202U	Fits without protective case or boot on device; Attaches to RAM® Tab-Tite™ cradle using AMPS hole pattern
RAM-HOL-TABL25U	RAM-202U	Fits without protective case or boot on device; Attaches to RAM® Tab-Lock™ cradle using AMPS hole pattern
3rd Party Cradle	RAM-202U	Attaches to any 3rd party cradle that has the AMPS hole pattern
3rd Party Cradle	RAM-2461U	Attaches to any 3rd party cradle that has the VESA 75mm hole pattern

		
ET50/55 8.3"		
Cradle	Ball Base	Notes
3rd Party Cradle	RAM-202U	Attaches to any 3rd party cradle that has the AMPS hole pattern

compatibility chart

3rd Party Cradle	RAM-2461U	Attaches to any 3rd party cradle that has the VESA 75mm hole pattern
	ET1 Enterprise Tablet	
Cradle	Ball Base	Notes
RAM-HOL-TAB4U	RAM-202U	ET1 cannot have handstrap attached to back of device; Attaches to RAM® Tab-Tite™ cradle using AMPS hole pattern
RAM-HOL-TAB4U	RAM-202U	ET1 cannot have handstrap attached to back of device; Attaches to RAM® Tab-Lock™ cradle using AMPS hole pattern

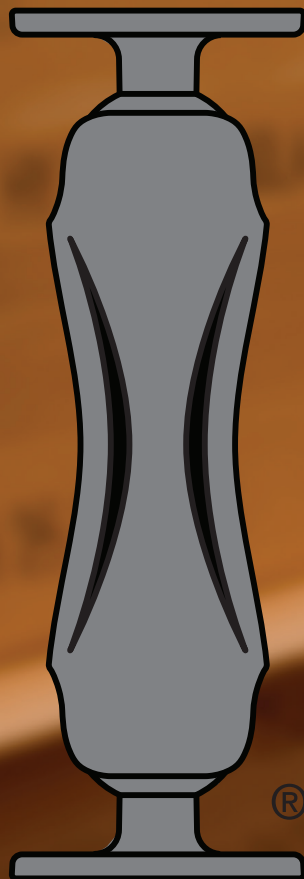
	EP10	
Cradle	Ball Base	Notes
EP10 Vehicle Cradle by RAM® (ep10-rv1000)	RAM-202U	Attaches to OEM passive cradle using AMPS hole pattern
EP10 Vehicle Cradle by RAM® (ep10-rv1005)	RAM-202U	Attaches to OEM powered cradle using AMPS hole pattern

the shape that started it all

RAM® Double Socket Arms offer a distinctive Hourglass Shape® that is designed to provide optimal performance for most any mounting application. They are recognized globally for the strength and flexibility they offer.

The unique RAM® Mount system offers a full line of interchangeable mounting bases, extensions, device adapters and accessories to secure your gear where you want it.

RAM® Mounts are guaranteed for life and are proudly manufactured in Seattle, Washington, USA. See all of the innovative products and solutions RAM® Mounts manufactures at rammount.com.



The RAM® Hourglass Shape® of the Double Socket Arms is a registered trademark of National Products Inc.

A man in a blue shirt is operating a red and white forklift in a warehouse. The forklift has a large roll of clear tape mounted on its mast. The warehouse is filled with stacks of cardboard boxes, and the floor is made of metal grates. Overhead lights illuminate the scene.

**RAM® Mounts is a division of
National Products Inc.**

8410 Dallas Avenue South
Seattle, WA 98108
Phone: 800.497.7479
sales@rammount.com
rammount.com

Lifetime Warranty

Patents and Trademarks
www.rammount.com/ip

National Products Inc. would like
to thank the following:

Northwest Handling Solutions
Northwest Forklift
Washington Liftruck
Raymond Handling Concepts



RAM[®] MOUNTS

Contact us

sales@rammount.com
1-800-497-7479
206-763-8361

Join our community



RAM[®] Mounts

Valued Partner