

Cabinets 1

Wall mounted cases 2

Accessories for cabinets and wall mounted cases . 3

Climate control . 4

Electronics cases 5

Subracks/ 19" chassis 6

Front panels, plug-in units ... 7

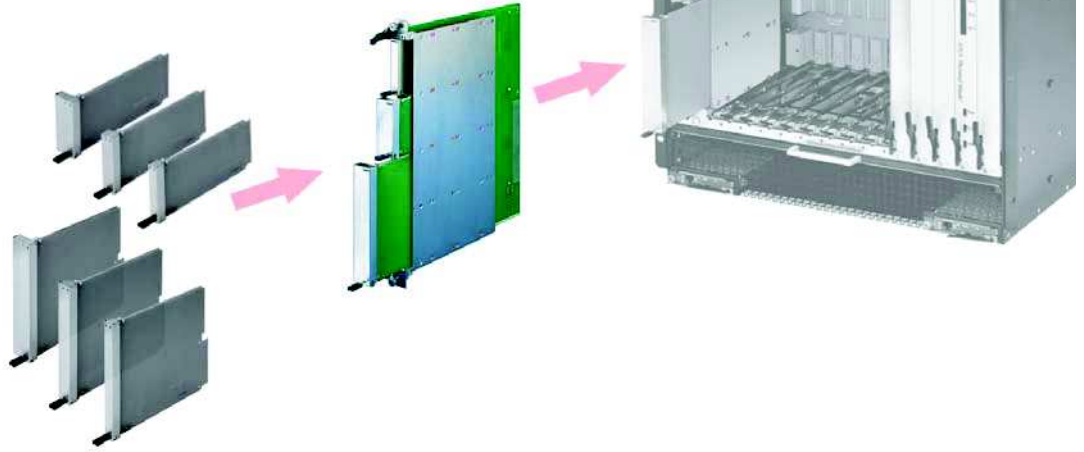
Systems 8

Power supply units 9

Backplanes ... 10

Connectors, front panel component system 11

Appendix 12



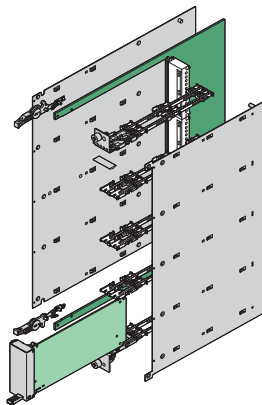
12806028

AdvancedMC carriers

AdvancedMC carriers are plug-in units that are slotted into an AdvancedTCA system. They contain the carrier board that accepts AdvancedMC modules.

Electrical connection to the AdvancedTCA backplane is via connectors. With the fully-assembled AdvancedMC carrier in place, cost-effective additional functions may be integrated into the system.

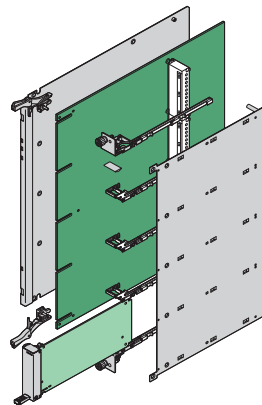
The standard, in accordance with PICMG specification AMC.0 R2.0, defines three different mechanical versions:



12805082

Cutaway carrier

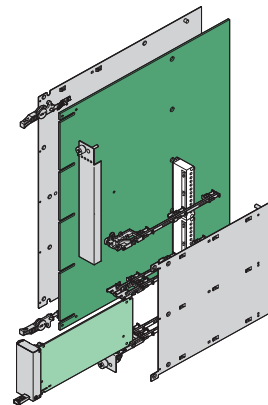
- Carrier board is cut out in the area of the AdvancedMC modules
- Max. placement: 8 single compact or 4 single full-size AdvancedMC modules
- Combinations of full-size and compact modules are possible



12805083

Conventional carrier

- Carrier board runs continuously from front to rear
- Max. placement: 4 single compact or 4 single mid-size AdvancedMC modules



12805081

Hybrid carrier

- Carrier board is a combination of conventional and cutaway carrier
- The maximum placement depends on the carrier board design
- Combinations of all AdvancedMC modules are possible

Systems – AdvancedMC carriers

AdvancedMC carriers for AdvancedTCA systems

- Cutaway, conventional and hybrid carrier mechanics for
 - compact AdvancedMC carrier boards
 - Mid-size AdvancedMC carrier boards
 - Full-size AdvancedMC carrier boards
- Standard versions from stock
- Individual carrier/module combination of your choice



12807020

AdvancedMC carriers

- 1 slot chassis, 8 U, 6 HP for AdvancedTCA systems
- Inserter/extractor handle for microswitch activation
- Versions
 - **Cutaway carrier** for compact and full-size modules
 - **Conventional carrier** for mid-size and compact modules



Individual solutions on request

- AdvancedMC hybrid carrier
- AdvancedMC hybrid mechanics for rugged AdvancedMC modules (MicroTCA.1)



12812005 12806016



30407004

ServicePLUS from page 8.35

- e.g. individual configuration and fitting of hybrid carriers)
- e.g. modifications (cut-outs, special colours)
- e.g. custom solutions (special sizes)

www.schroff.biz/ServicePLUS

Cutaway carriers

- For compact and full-size modules
- Complete kits 8.28
- Kit without struts, guide rails 8.29
- Guide rails/struts 8.30
- Microswitches ... 8.31
- Differences between standard and MF handles for AMC carriers . 8.31

Conventional carriers

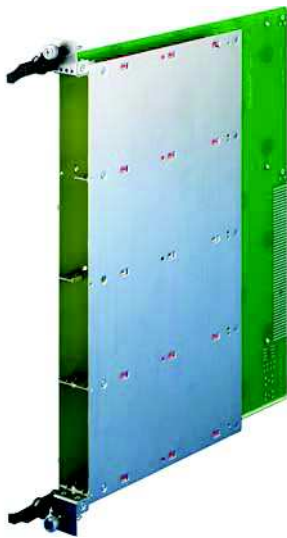
- For mid-size and compact modules
- Complete kits 8.32
- With Southco AdvancedTCA handle 8.32
- With AdvancedTCA IEA handle 8.33
- Guide rails/struts 8.34
- Microswitches ... 8.34

ServicePLUS .. 8.35

- ServicePLUS configuration
- Hybrid carrier .. 8.35

Systems – AdvancedMC cutaway carrier

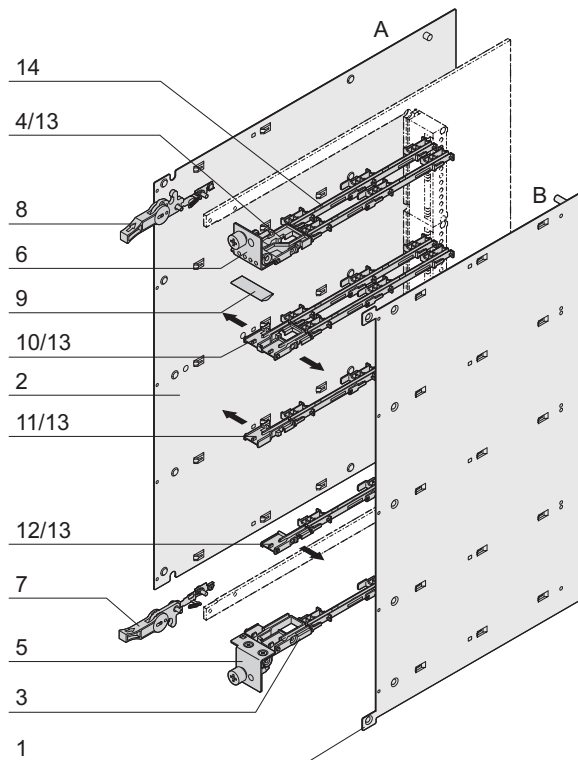
Carrier mechanics for compact and full-size AdvancedMC modules



- Mechanics for cutaway carrier board (carrier **with** 3 different struts, guide rails, ESD clips)
- Stainless steel (EMC shielded)
- Width 1 slot (6 HP), height 8 U, corresponds to PICMG® AMC.0 R2.0
- Inserter/extractor handle, designed for microswitch activation hot-swap)

Delivery comprises (Kit)

Item	Qty	Description
1	1	Cover plate B (right), stainless steel, brushed, 0.6 mm, inner surface electrically insulated, exterior with protective film
2	1	Cover plate A (left), stainless steel, brushed, 0.6 mm, inner surface electrically insulated, exterior with protective film
3	1	Lower splitting extrusion (strut), Zn die-cast, nickel-plated
4	1	Upper splitting extrusion (strut), Zn die-cast, nickel-plated
5	1	Lower front panel, stainless steel, brushed, 1 mm, alignment pin and retention screws pressed in
6	1	Upper front panel, stainless steel, brushed, 1 mm, alignment pin and retention screws pressed in, with holes for LEDs
7	1	Standard inserter/extractor handle, with microswitch operation, plastic lever, black
8	1	Standard inserter/extractor handle, plastic lever, black
9	1	EMC profile seal, core: foam, sleeve: textile cladding with CuNi coating
10	3	Support member between cover A and B
11	3	Support member for cover A (on the left)
12	3	Support member for cover B (on the right)
13	8	ESD clip
14	10	AdvancedMC guide rail, PBT, UL 94 V-0, red
15	1	Assembly kit



12805002

12807086

Order Information

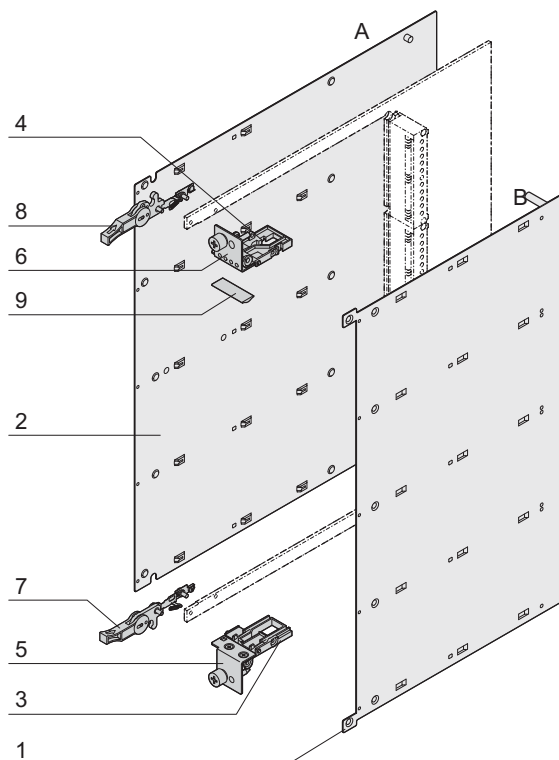
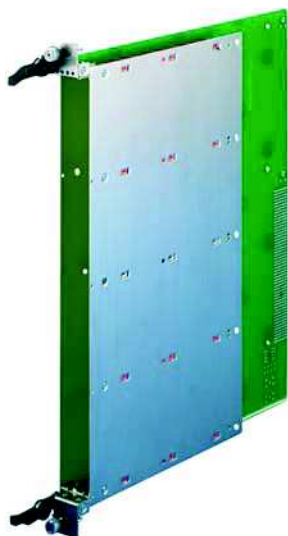
Description	Part no.
Carrier mechanics for AdvancedMC compact and full-size modules with struts, ESD clips and guide rails	10849-001
Accessories	
Microswitch, normally closed, for AdvancedMC carrier (compact and full-size modules) for soldering (SMD), PU 10 pieces	20849-236
Microswitch, normally open, for AdvancedMC carrier (compact and full-size modules) for soldering (SMD), PU 10 pieces	20849-235
Description inserter/extractor handle	Page 8.31
Microswitch description	Page 8.31
AdvancedMC module mechanics	Page 8.56

ServicePLUS see page 8.35



Systems – AdvancedMC cutaway carrier

Carrier mechanics for compact and full-size AdvancedMC modules



- Mechanics for cutaway carrier board (carrier **without** struts, guide rails, ESD clips, for individual placement)
- Stainless steel (EMC shielded)
- Width 1 slot (6 HP), height 8 U, corresponds to PICMG® AMC.0 R2.0
- Inserter/extractor handle, designed for microswitch activation (hot-swap)

Delivery comprises (Kit)

Item	Qty	Description
1	1	Cover plate B (right), stainless steel, brushed, 0.6 mm, inner surface electrically insulated, exterior with protective film
2	1	Cover plate A (left), stainless steel, brushed, 0.6 mm, inner surface electrically insulated, exterior with protective film
3	1	Lower splitting extrusion (strut), Zn die-cast, nickel-plated
4	1	Upper splitting extrusion (strut), Zn die-cast, nickel-plated
5	1	Lower front panel, stainless steel, brushed, 1 mm, alignment pin and retention screws pressed in
6	1	Upper front panel, stainless steel, brushed, 1 mm, alignment pin and retention screws pressed in, with holes for LEDs
7	1	Standard inserter/extractor handle, with microswitch operation, plastic lever, black
8	1	Standard inserter/extractor handle, plastic lever, black
9	1	EMC profile seal, core: foam, sleeve: textile cladding with CuNi coating
10	1	Assembly kit

Order Information

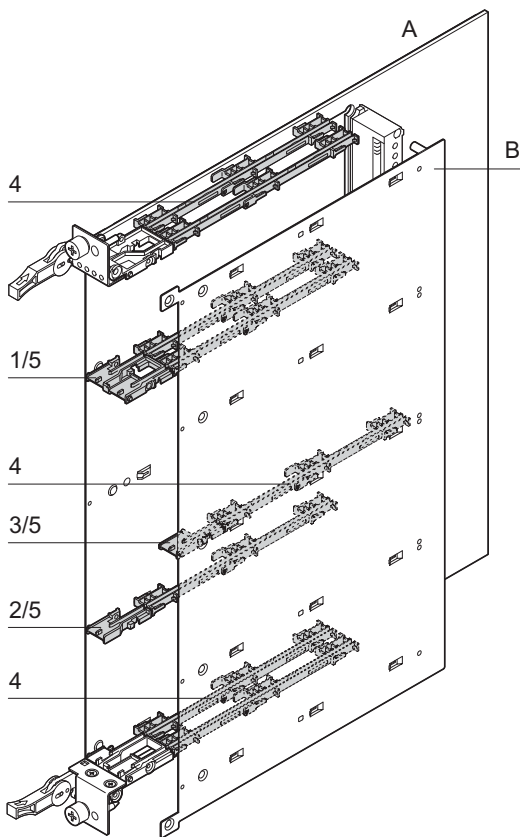
Description	Part no.
Carrier mechanics for AdvancedMC compact and full-size modules without struts, ESD clips and guide rails	10849-002
Accessories	
Microswitch, normally closed, for AdvancedMC carrier (compact and full-size modules) for soldering (SMD), PU 10 pieces	20849-236
Microswitch, normally open, for AdvancedMC carrier (compact and full-size modules) for soldering (SMD), PU 10 pieces	20849-235
Further struts, ESD clips and guide rails	Page 8.30
Description inserter/extractor handle	Page 8.31
Microswitch description	Page 8.31
AdvancedMC module mechanics	Page 8.56



ServicePLUS see page 8.35

Systems – AdvancedMC cutaway carrier

Board guides/struts for AdvancedMC compact and full-size modules



- Struts and guide rails are always required to guide boards
- 3 different struts
 - The strut is assembled between the cover plates A and B
 - The strut is assembled on the left of cover plate A
 - The strut is assembled on the right of cover plate B
- The ESD clip pushes into the strut (one per board guide)
- The guide rails clip into the cover plate

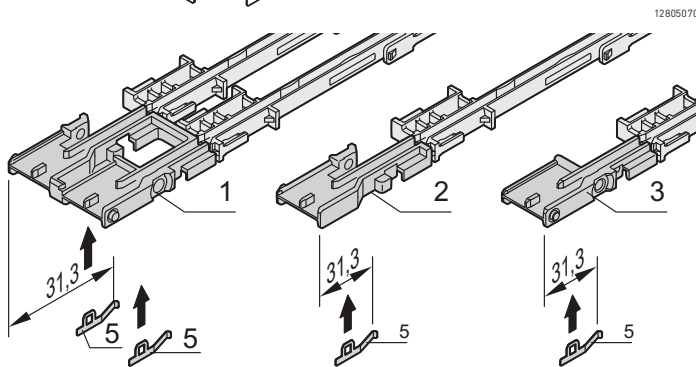
Order Information

Item	Description	Qty/PU	Part no.
1	Strut between cover A (left) and B (right), Zn die-cast, nickel-plated	10	20849-009
2	Splitting extrusion (strut) for cover A (left), Zn die-cast, nickel-plated	10	20849-010
3	Splitting extrusion (strut) for cover B (on the right), Zn die-cast, nickel-plated	10	20849-011
4	AdvancedMC guide rail, PBT, UL 94 V-0, red	10	20849-008
5	ESD clip, stainless spring steel, for deflection of electrostatic charges	50	20849-021

Accessories

Microswitch, normally closed, for AdvancedMC carrier (compact and full-size modules) 20849-236
for soldering (SMD), PU 10 pieces, page 8.31

Microswitch, normally open, for AdvancedMC carrier (compact and full-size modules) 20849-235
for soldering (SMD), PU 10 pieces - page 8.31



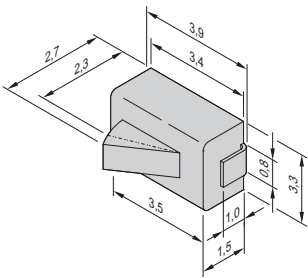
12805071



ServicePLUS see page 8.35

Systems – AdvancedMC cutaway carrier

Microswitch for carrier (compact and full-size AdvancedMC modules)



12807066

■ Microswitch for soldering (SMD)

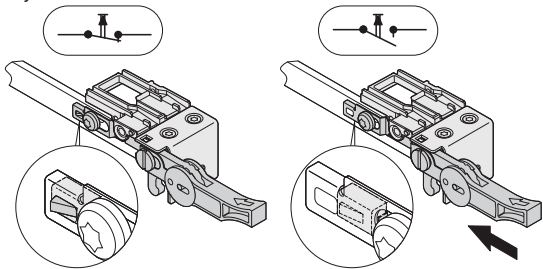
Order Information

Description	Qty/PU	Part no.
Microswitch, normally closed , for AdvancedMC carrier (compact and full-size modules)	10	20849-236
Microswitch, normally open , for AdvancedMC carrier (compact and full-size modules)	10	20849-235

Technical data

Max. switch current	1 mA, 5 V _{DC}
Operating temperature	-15 °C ... +70 °C
Electrical lifespan	10 ⁵ switching cycles

"Normally closed"

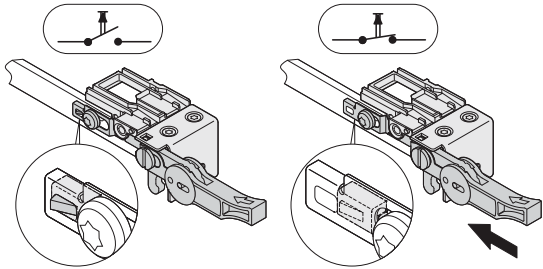


12807081

Handle in inoperative position

Handle activated

Closer



12807082

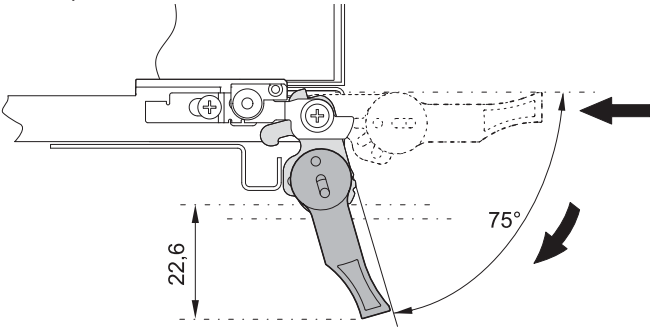
Handle in inoperative position

Handle activated

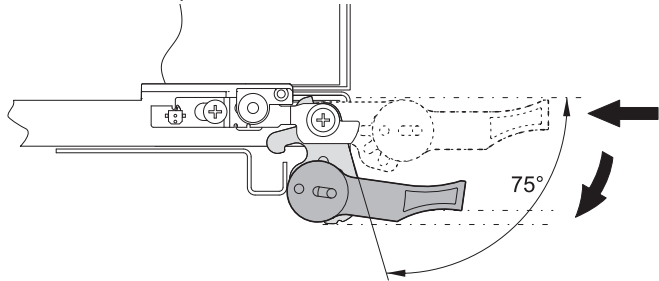
Differences between standard and MF handle for AdvancedMC carrier (compact and full-size modules)

Standard front handle - is included in delivery of carriers for compact and full-size modules

MF handle - can be exchanged by standard handle if needed (available on request)



12806063



12805072

- Extractor handle 75° opening angle
- Insertion/extraction in one step
- Swing range: 23 mm below and above the pitch line
- Included in delivery of carrier

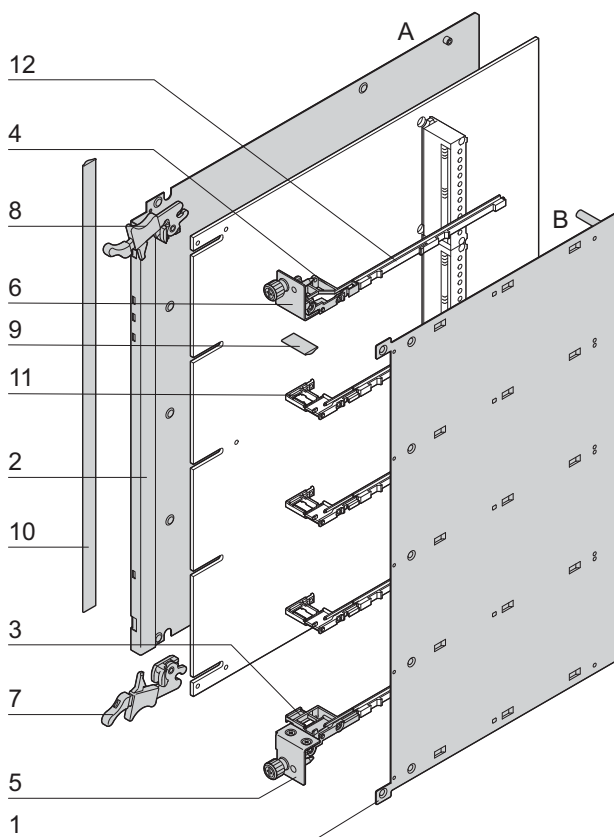
- Extractor handle 75° opening angle
- Insertion/extraction in three steps (2 operations)
- Small swing range (0 mm) below and above the pitch line. The lower respectively upper limit of the carrier is not exceeded during extraction.

Systems – AdvancedMC conventional carrier

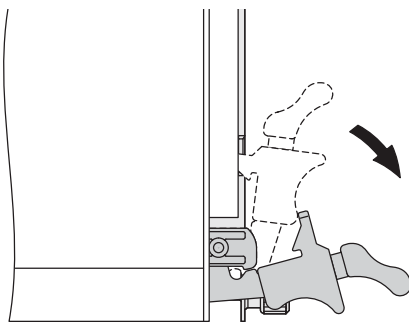
Carrier mechanism for mid-size AdvancedMC modules with AdvancedTCA Southco handle, complete kit



12808003 12808004



12808052



12808053

- Mechanics for conventional carrier, stainless steel (EMC shielded)
- Width 1 slot (6 HP), height 8 U, corresponds to PICMG® AMC.0 R2.0
- AdvancedTCA **Southco** inserter/extractor handle, designed for microswitch activation (hot-swap)
- Carrier mechanics with struts and guide rails for four modules

Delivery comprises (Kit)

Item	Qty	Description
1	1	Cover plate B (right), stainless steel, brushed, 0.6 mm, inner surface electrically insulated, exterior with protective film
2	1	Cover plate A (left), stainless steel, brushed, 0.6 mm, inner surface electrically insulated, exterior with protective film
3	1	Lower splitting extrusion (strut), Zn die-cast, nickel-plated
4	1	Upper splitting extrusion (strut), Zn die-cast, nickel-plated
5	1	Lower front panel, stainless steel, brushed, 1 mm, alignment pin and retention screws pressed in
6	1	Upper front panel, stainless steel, brushed, 1 mm, alignment pin and retention screws pressed in
7	1	Lower AdvancedTCA Southco inserter/extractor handle, with microswitch activation, lever plastic, black
8	1	Upper AdvancedTCA Southco inserter/extractor handle, with microswitch activation, lever plastic, black
9	1	EMC profile seal, core: foam, sleeve: textile cladding with CuNi coating
10	1	EMC profile seal, core: foam, sleeve: textile cladding with CuNi coating
11	3	Splitting extrusion between covers A and B (4 ESD clips)
12	5	AdvancedMC guide rail, PBT, UL 94 V-0, green
13	1	Fixing material kit

Order Information

Description	Part no.
AdvancedMC carrier mechanism for mid-size AdvancedMC modules with Southco AdvancedTCA IEA handle with struts, ESD clips and guide rails	10849-009

Accessories

Microswitch for carriers (mid-size AdvancedMC modules) normally closed, for soldering (SMD), PU 10 pieces - Page 8.34	20817-853
Microswitch for carriers (mid-size AdvancedMC modules) normally open, for soldering (SMD), PU 10 pieces - Page 8.34	20817-909
AdvancedMC module mechanics	Page 8.56

Note

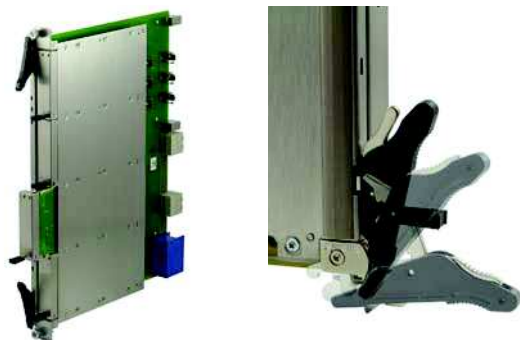
- Carrier with stronger cover plate A (1 mm) on request
- Carrier for compact AdvancedMC modules on request
- Southco type handle kit on request

ServicePLUS see page 8.35

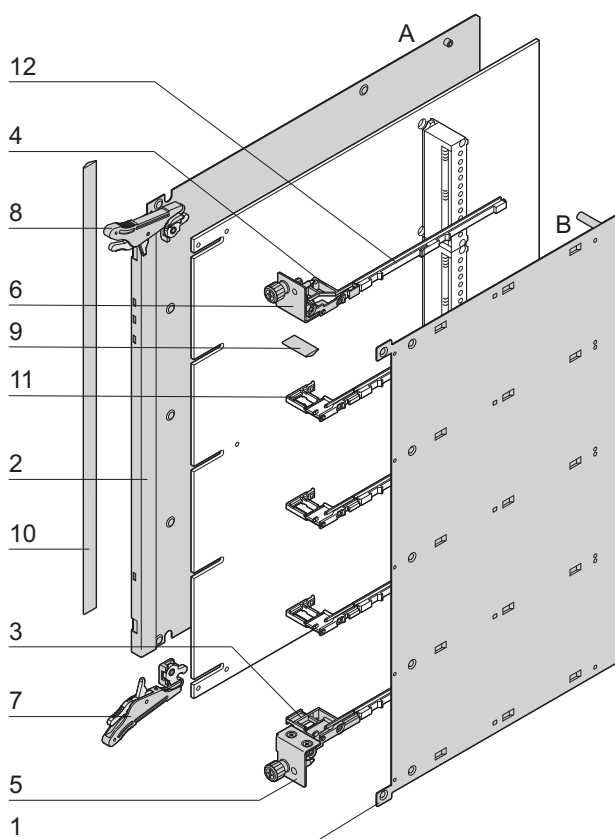


Systems – AdvancedMC conventional carrier

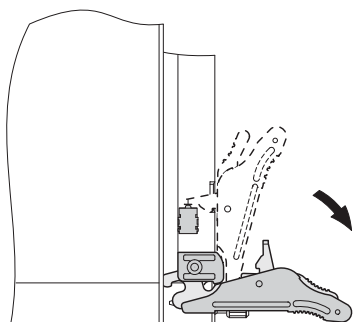
Carrier mechanism for mid-size AdvancedMC modules with AdvancedTCA IEA handle, complete kit



12808001 12808002



12808050



12808051

- Mechanics for conventional carrier, stainless steel (EMC shielded)
- Width 1 slot (6 HP), height 8 U, corresponds to PICMG® AMC.0 R2.0
- AdvancedTCA IEA inserter/extractor handle, designed for microswitch activation (hot-swap)
- Carrier mechanics with struts and guide rails for four modules

Delivery comprises (Kit)

Item	Qty	Description
1	1	Cover plate B (right), stainless steel, brushed, 0.6 mm, inner surface electrically insulated, exterior with protective film
2	1	Cover plate A (left), stainless steel, brushed, 0.6 mm, inner surface electrically insulated, exterior with protective film
3	1	Lower splitting extrusion (strut), Zn die-cast, nickel-plated
4	1	Upper splitting extrusion (strut), Zn die-cast, nickel-plated
5	1	Lower front panel, stainless steel, brushed, 1 mm, alignment pin and retention screws pressed in
6	1	Upper front panel, stainless steel, brushed, 1 mm, alignment pin and retention screws pressed in
7	1	Lower AdvancedTCA IEA inserter/extractor handle, with microswitch activation, plastic lever, black
8	1	AdvancedTCA IEA inserter/extractor handle, top, with microswitch activation, lever plastic, black
9	1	EMC profile seal, core: foam, sleeve: textile cladding with CuNi coating
10	1	EMC profile seal, core: foam, sleeve: textile cladding with CuNi coating
11	3	Splitting extrusion between covers A and B (4 ESD clips)
12	5	AdvancedMC guide rail, PBT, UL 94 V-0, green
13	1	Fixing material kit

Order Information

Description	Part no.
AdvancedMC carrier mechanism for mid-size AdvancedMC modules with AdvancedTCA IEA handle with struts, ESD clips and guide rails	10849-011
Accessories	
Microswitch for carriers (mid-size AdvancedMC modules) normally closed, for soldering (SMD), PU 10 pieces	20817-853
Microswitch for carriers (mid-size AdvancedMC modules) normally open, for soldering (SMD), PU 10 pieces	20817-909
AdvancedMC module mechanics	Page 8.56

Note

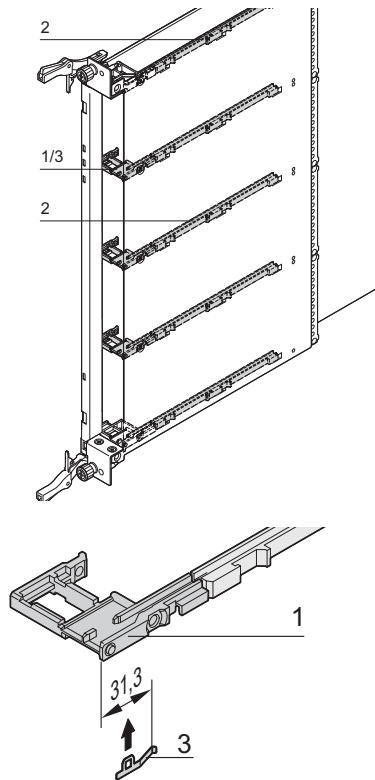
- Carrier with stronger cover plate A (1 mm) on request
- Carrier for compact AdvancedMC modules on request
- Southco type handle kit on request



ServicePLUS see page 8.35

Systems – AdvancedMC conventional carrier

Board guides/struts for AdvancedMC mid-size modules



12806061

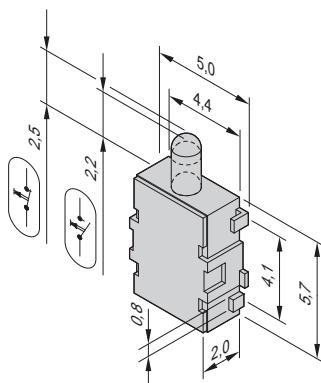
12806062

- Struts and guide rails are always required to guide boards
- Strut is assembled between cover plates A and B
- The ESD clip pushes into the strut (one per board guide)
- The guide rails clip into the cover plate

Order Information

Item	Description	Qty/PU	Part no.
1	Strut between cover A (left) and B (right), Zn die-cast, nickel-plated	10	20849-242
2	AdvancedMC guide rail for mid-size carrier, PBT, UL 94 V-0, green	10	20849-166
3	ESD clip, stainless spring steel, for deflection of electrostatic charges	50	20849-021

Microswitch for carriers (mid-size AdvancedMC modules)



12807071

- Microswitch for soldering (SMD)
- Can be used for all conventional carrier handles

Order Information

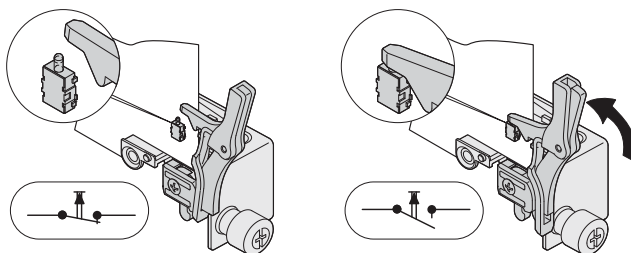
Description	Qty/PU	Part no.
Microswitch (normally closed) for carrier (mid-size AdvancedMC modules)	10	20817-853
Microswitch (normally open) for carrier (mid-size AdvancedMC modules)	10	20817-909

Technical data

Max. switch current	100 mA, 12 V _{DC}
Operating temperature	-20 °C ... +60 °C
Electrical lifespan	5 x 10 ⁵ switching cycles

Opener

Closer



12807079

12807087

Systems – AdvancedMC carrier ServicePLUS



modification

Small changes. Large impact.

Custom drillings, cut-outs and special colours for off-the-shelf products

- Mechanical modifications
- Ready to send within 10 working days



solution

Simple. Fast. From one source.

Integration and custom developments

- Customised complete solutions

ServicePLUS: solution



12812004

AdvancedMC carrier mechanics

- The carrier board is a combination of conventional and cutaway carriers
- Max. placement depends on the design of the carrier board
- Custom versions on request
 - Single/double combinations
 - Handles
 - AdvancedTCA IEA
 - AdvancedTCA Southco