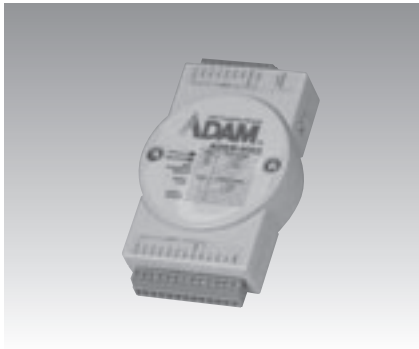


ADAM-6022

Ethernet-based Dual-loop PID Controller



ADAM-6022

CE FCC

Specifications

General

- **Power Consumption** 4 W @ 24 Vdc
- **Loop Number** 2 (3 AI, 1 AO, 1 DI, 1 DO for each control loop)
- **LAN** 10/100Base-T

Analog Input

- **Accuracy** $\pm 0.1\%$ or better
- **Bandwidth** 13.1 Hz @ 50 Hz
15.72 Hz @ 60 Hz
- **Channels** 6 differential
- **CMR @ 50/60 Hz 92 dB min.**
- **Resolution** 16 bits
- **Input Impedance** 20 M
- **Input Range** 0 ~ 10 V_{DC}, 0 ~ 20 mA,
4 ~ 20 mA
- **Isolation Voltage** 2,000 V_{DC}
- **Sampling Rate** 10 samples/sec.
- **Span Drift** ± 25 ppm/° C
- **Zero Drift** ± 6 μ V/° C

Analog Output

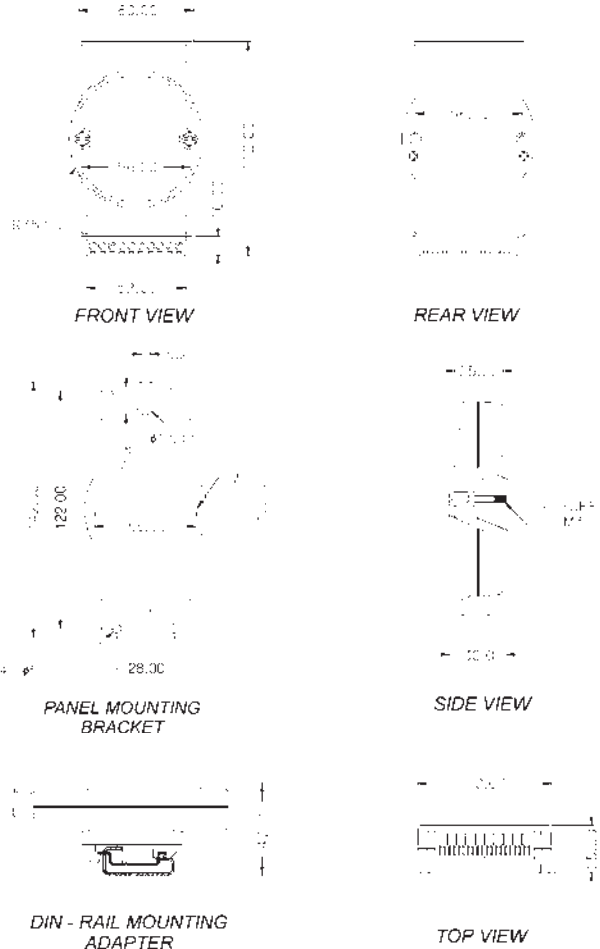
- **Channels** 1
- **Accuracy** 0.05% of FSR
- **Channels** 2
- **Drift** ± 50 ppm/° C
- **Drive Voltage** 15 V_{DC} (current output)
- **Output Range** 0 ~ 10 V_{DC}, 4 ~ 20 mA,
0 ~ 20 mA
- **Resolution** 12 bits

Digital Inputs

- **Channels** 2
- **Open Collector to 30 V 100 mA max. load 300 mW**
- **Isolation Voltage** 2,000 V_{DC}
- **Fault and Overvoltage** Withstands overvoltage
overvoltage
- **Power Reversal** Protection
- **Protection** up to +/-35 V_{DC}

ADAM-6000 Series Dimensions

Unit: mm



Digital Outputs

- **Channels** 2
- **Open Collector to 30 V 100 mA max. load**
- **Fault and Overvoltage Protection** Withstands overvoltage
up to +/-35 V_{DC}

Environment

- **Humidity (Operating)** 20 ~ 95% RH,
(non-cond.)
- **Humidity (Storage)** 0 ~ 95% RH,
(non-cond.)
- **Operating Temperature** -10 ~ 50° C
- **Storage Temperature** -20 ~ 80° C

Ordering Information

- **ADAM-6022** Dual-loop PID
Controller