

ADAM-5017UH

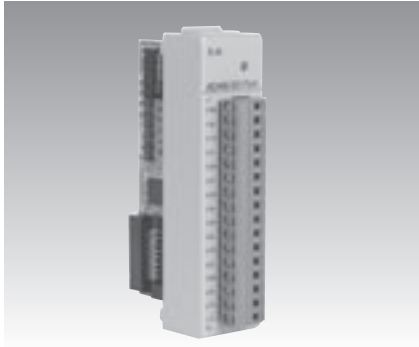
ADAM-5018

ADAM-5018P

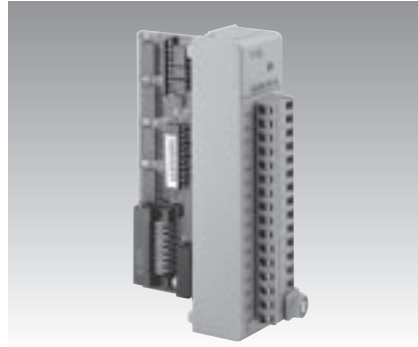
8-ch Ultra High Speed Analog Input Module

7-ch Thermocouple Input Module

7-ch Thermocouple Input Module with Independent Input Range



ADAM-5017UH



ADAM-5018



ADAM-5018P



Specifications

General

- **Certifications** CE
- **Connectors** 1 x Plug-in screw terminal (# 14-22 AWG)
- **Power Consumption** 2.2 W (max.)

Analog Input

- **Accuracy** ±0.1% or better
- **Bandwidth** 200 kHz
- **Channels** 8 differential
- **CMR @ 50/60 Hz** 92 dB min
- **Differential Non-linear** +/-1 LSB
- **Input Impedance** Voltage: 2 MΩ
Current: 120Ω (Build-in 12Ω. register for Current Input)
- **Integral Non-linear** +/-1 LSB
- **Input Type** mV, V, mA
- **Input Range** ±10 V, +0 ~ 10 V, 0 ~ 20 mV, +4 ~ 20 mA
- **Low pass filter** Configured by User
- **Resolution** 12-bit
- **Sampling Rate** Depends on base unit

ADAM-5000/485 & 5000E:	100 Samples/sec max (Total): one ADAM-5017UH installed
ADAM-5000/TCP:	100 Samples/sec max (Total): one ADAM-5017UH installed
ADAM-5510 :	200K Samples/sec max (Single Channel) : one ADAM-5017UH installed
ADAM-5550 :	1K Samples/sec per channel: one ADAM-5017UH installed

*Depending on the performance of client server or controller

- **Signal Input Bandwidth** 200 kHz for both voltage and current inputs

Protection

- **Isolation Voltage** 3000 V_{DC}

Note:

- 1) The voltage difference between any two pins must not exceed 15 V
- 2) Distinct range settings allowed on each channel

Ordering Information

- **ADAM-5017UH** 8-ch Ultra High Speed Analog Input Module

Specifications

General

- **Certifications** CE, FM
- **Connectors** 1 x Plug-in screw terminal (# 14-22 AWG)
- **Power Consumption** 0.63 W (max.)

Thermocouple Input

- **Accuracy** ±0.1% or better
- **Bandwidth** 13.1 Hz @ 50 Hz
15.72 Hz @ 60 Hz
- **Channels** 7 differential
- **CMR @ 50/60 Hz** 92 dB min
- **Input Impedance** 2 MΩ
- **Input Range** ±15 mV, ±50 mV, ±100 mV, ±500 mV, ±1 V, ±2.5 V, ±20 mA
- **Input Type** mV, V, mA, thermocouple
- **Resolution** 16-bit
- **Sampling Rate** 10 samples/sec. (total)
- **Span Drift** ±25 PPM/°C
- **Zero Drift** ±6 μV/°C
- **T/C Type and Temperature Range**

J	0°	~	760° C
K	0°	~	1370° C
T	-100°	~	400° C
E	0°	~	1000° C
R	500°	~	1750° C
S	500°	~	1750° C
B	500°	~	1800° C

Protection

- **Fault and Overvoltage Protection** Withstands overvoltage up to ±35 V
- **Isolation Voltage** 3,000 V_{DC}

Ordering Information

- **ADAM-5018** 7-ch Thermocouple Input Module

Specifications

General

- **Certifications** CE
- **Connectors** 1 x Plug-in screw terminal (# 14-22 AWG)
- **Power Consumption** 0.63 W (max.)

Thermocouple Input

- **Accuracy Bandwidth** ±0.1% or better
13.1 Hz @ 50 Hz
15.72 Hz @ 60 Hz
- **Channels** 7 differential with Independent Input Range
- **CMR @ 50/60 Hz** 92 dB min
- **Input Impedance** 200 MΩ. (Build-in 120 Ω Register for Current Input)
- **Input Range and Types**

Thermocouple			
J	0	~	760° C
K	0	~	1370° C
T	-100	~	400° C
E	0	~	1000° C
R	500	~	1750° C
S	500	~	1750° C
B	500	~	1800° C
- **Current mode** ±20 mA, 4-20mA
- **Voltage** ±15 mV, ±50 mV, ±100 mV, ±500 mV, ±1 V, ±2.5 V
- **Resolution** 16-bit
- **Sampling Rate** 10 samples/sec. (total)
- **Span Drift** ±25 PPM/°C
- **Zero Drift** ±6 μV/°C
- **High Common Mode** 2000 V_{DC}

Protection

- **Fault and Overvoltage Protection** Withstands over voltage up to ±35 V
- **Isolation Voltage** 3,000 V_{DC}
- **Filter function** Yes
- **Built-in TVS/ESD Protection**

Ordering Information

- **ADAM-5018P** 7-ch Thermocouple Input Module with Independent Input Range