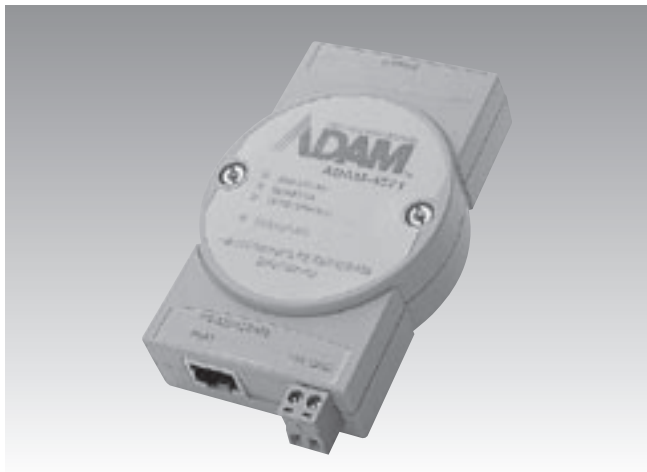


# ADAM-4571/4571L

## 1-port Serial to Ethernet Data Gateway



CE FCC

### Features

- Supports RS-232/422/485 serial communication (ADAM-4571)
- Supports RS-232 serial communication (ADAM-4571L)
- Supports 10/100Base-T Ethernet port
- Supports high transmission speeds up to 230 kbps
- Supports an advanced security mechanism to avoid unauthorized access
- Auto-reconnection
- Remote updating firmware
- Easy management with port Mapping Utility
- Supports Windows® NT/2000/XP drivers
- Surge protection for serial line signals
- Automatic RS-485 data flow control (ADAM-4571)

### Introduction

ADAM-4571 and ADAM-4571L are fast and cost effective data gateways between serial and Ethernet interfaces. The units also bring the advantages of remote management and data accessibility to RS-232/422/485 devices. The transmission speed of the units is up to 230 kbps, meeting the demands for high-speed data exchanges. In addition, you can use Windows utility to configure ADAM-4571 and ADAM-4571L without further programming. The units not only protect your current hardware investment but also ensure future network expandability. Since the protocol conversion is transparent, all your existing devices can be seamlessly integrated with an Ethernet network. Therefore, ADAM-4571 and ADAM-4571L can be used in security systems, factory automation, SCADA, transportation and more. ADAM-4571 and ADAM-4571L link both your existing human-machine interface(HMI) PC and your RS-232/422/485 devices with Ethernet cables.

ADAM-4571 and ADAM-4571L come with a Windows configuration and port-mapping utility. The configuration tool can auto-detect all Ethernet Data Gateway devices on the local network, and let you adjust all settings. The port mapping utility helps you to setup up COM ports for Windows NT/2000/XP platform. This helps you configure all ports to meet your needs.

### Specifications

#### Ethernet Communication

- **Compatibility** IEEE802.3, IEEE802.3u
- **Speed** 10/100 Mbps
- **Connectors** 1 x RJ-45

#### Serial Communication

- **Type** RS-232/422/485 (ADAM-4571)  
RS-232 (ADAM-4571L)
- **Connectors** 1 x RJ-48
- **Ports** 1
- **Data Bits** 5,6,7,8
- **Stop Bits** 1,1.5,2
- **Parity Bits** Odd,even,none,space,mark
- **Baudrate** 50 bps ~ 230 Kbps
- **Data Signals** RS-232: TxD, RxD, CTS, RTS, DTR, DSR, DCD, RI, GND  
RS-422: TxD+, TxD-, RxD+, RxD-  
RS-485: Data+, Data-, GND

#### Protection

- **Surge Protection** 15 k V<sub>ESD</sub>

#### Software

- **Drivers Supported** Windows NT/2000/XP
- **Utility Software** Auto-detecting configuration utility (up to 128 devices)  
Port mapping utility
- **Operation Mode** Virtual COMport
- **Configuration** Configuration utility  
Port mapping utility

#### Mechanics

- **Enclosure** ABS+PC with solid mounting hardware
- **Mounting** DIN-rail, Panel Mounting, Piggyback stack
- **Dimensions (H x W x D)** 70 x 130 x 30 mm

#### General

- **Certification** CE,FCC ClassA
- **LED** System: Power, Status  
Ethernet: Speed,Link, Tx/Rx  
Serial: Tx, Rx

#### Power

- **Power Input** Unregulated 10 ~ 30 V<sub>DC</sub>
- **Power Consumption** 4 W

#### Environment

- **Operating Temp.** 0 ~ 60° C (32 ~ 140° F)
- **Storage Temp.** -20 ~ 80° C (-4 ~ 176° F)
- **Operating Humidity** 20% ~ 95% (non-condensing)
- **Storage Humidity** 0% ~ 95% (non-condensing)

### Ordering Information

- **ADAM-4571** 1-port RS-232/422/485 to Ethernet Data Gateway  
(1 pc of 1m RJ-48 to male DB9 RS-232/422/485 cable included)
- **ADAM-4571L** 1-port RS-232 to Ethernet Data Gateway  
(2 pcs of 1 m RJ-48 to male DB9 RS-232/422/485 cable included)
- **OPT1A** 1m RJ-48 to male DB9 RS-232/422/485 cable
- **OPT1D** 30cm RJ-48 to male DB9 RS-232/422/485 cable