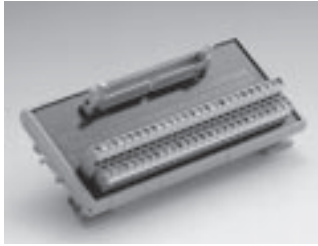


# ADAM-3900 Series

Wiring Terminals for  
DIN-rail Mounting



## ADAM-3950

50-pin Flat Cable Wiring  
Terminal for DIN-rail Mounting

### Features

- Low cost universal DIN-rail mounting screw terminal module for PC-LabCard™ products with 50-pin flat cable connector.
- Case dimensions (W x L x H): 77.5 x 146.3 x 51 mm (3.1" x 5.8" x 2.0")

### To Be Used With

USB-4751/4751L, PCI-1737U, PCI-1739U, PCL-722, PCL-724, PCL-731



## ADAM-3950D

Dual 50-pin SCSI-II Wiring  
Terminal for DIN-rail Mounting

### Features

- Low cost universal DIN-rail mounting screw terminal module for industrial applications with dual 50-pin SCSI-II female connectors
- Case dimensions (W x L x H): 77.5 x 179.5 x 51 mm (3.1" x 7.1" x 2.0")

### To Be Used With

PCI-1240U, PCI-1752U, PCI-1752USo, PCI-1754, PCI-1756



## ADAM-3950S

50-pin SCSI-II Wiring Terminal  
for DIN-rail Mounting

### Features

- Low cost universal DIN-rail mounting screw terminal module for industrial applications with 50-pin SCSI-II female connector
- Case dimensions (W x L x H): 77.5 x 146.3 x 51 mm (3.1" x 5.8" x 2.0")

### To Be Used With

PCI-1752U, PCI-1752USO, PCI-1754, PCI-1756



## ADAM-3951

Wiring Terminal Module with  
LED indicators for DIN-rail  
Mounting

### Features

- Low-cost DIN-rail mounting wiring terminal module for PCI-1752/1754/1756 with 50-pin SCSI-II female connector.
- Screw-clamp terminal blocks allow easy and reliable connections.
- Each LED indicates its current bi-directional I/O logic status with either green or red light.
- Case dimensions (W x L x H): 77.5 x 179.5 x 41.5 mm (3.1" x 7.1" x 1.6")

### To Be Used With

PCI-1752U, PCI-1752USO, PCI-1754, PCI-1756